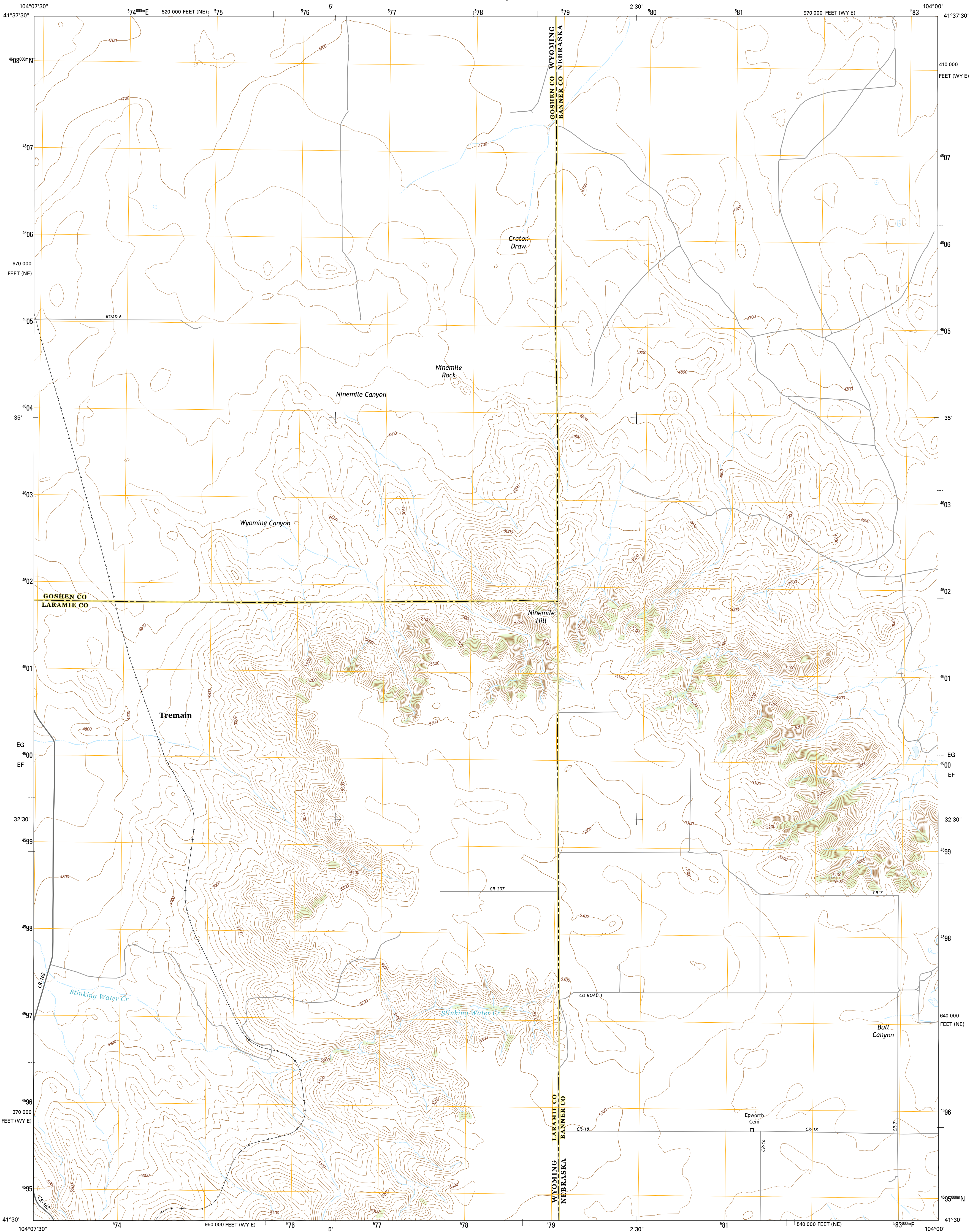




U.S. DEPARTMENT OF THE INTERIOR  
U.S. GEOLOGICAL SURVEY



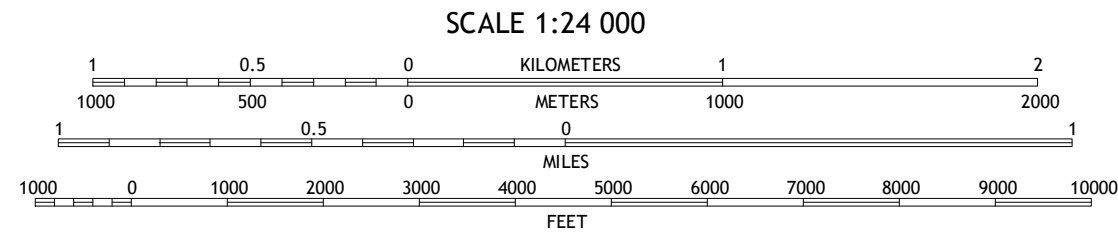
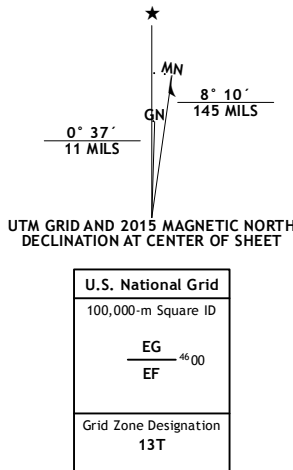
TREMAIN QUADRANGLE  
WYOMING-NEBRASKA  
7.5-MINUTE SERIES



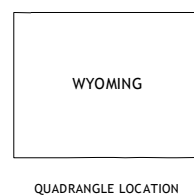
**Produced by the United States Geological Survey**  
North American Datum of 1983 (NAD83)  
World Geodetic System of 1984 (WGS84), Projection and  
1 000-meter grid: Universal Transverse Mercator, Zone 13T  
10 000-foot ticks: Wyoming Coordinate System of 1983 (east  
zone), Nebraska Coordinate System of 1983

This map is not a legal document. Boundaries may be  
generalized for this map scale. Private lands within government  
reservations may not be shown. Obtain permission before  
entering private lands.

Imagery.....NAIP, August 2014  
Roads.....HERE, ©2013 - 2014  
Names.....GNIS, 2015  
Hydrography.....National Hydrography Dataset, 2002  
Contours.....National Elevation Dataset, 2002  
Boundaries.....Multiple sources; see metadata file 1972 - 2015  
Public Land Survey System.....BLM, 2011



CONTOUR INTERVAL 20 FEET  
NORTH AMERICAN VERTICAL DATUM OF 1988  
This map was produced to conform with the  
National Geospatial Program US Topo Product Standard, 2011.  
A metadata file associated with this product is draft version 0.6.18



**ROAD CLASSIFICATION**  
Expressway  
Secondary Hwy  
Ramp  
Local Connector  
Local Road  
4WD  
Interstate Route  
US Route  
State Route

1	2	3
4	5	6
7	8	9

ADJOINING QUADRANGLES

1 La Grange  
2 McCombs Pass  
3 Murray Lake  
4 Petch Reservoir  
5 Murray Lake SW  
6 Gurney Peak  
7 Albin  
8 Head of Rocky Hollow

TREMAIN, WY-NE  
2015

