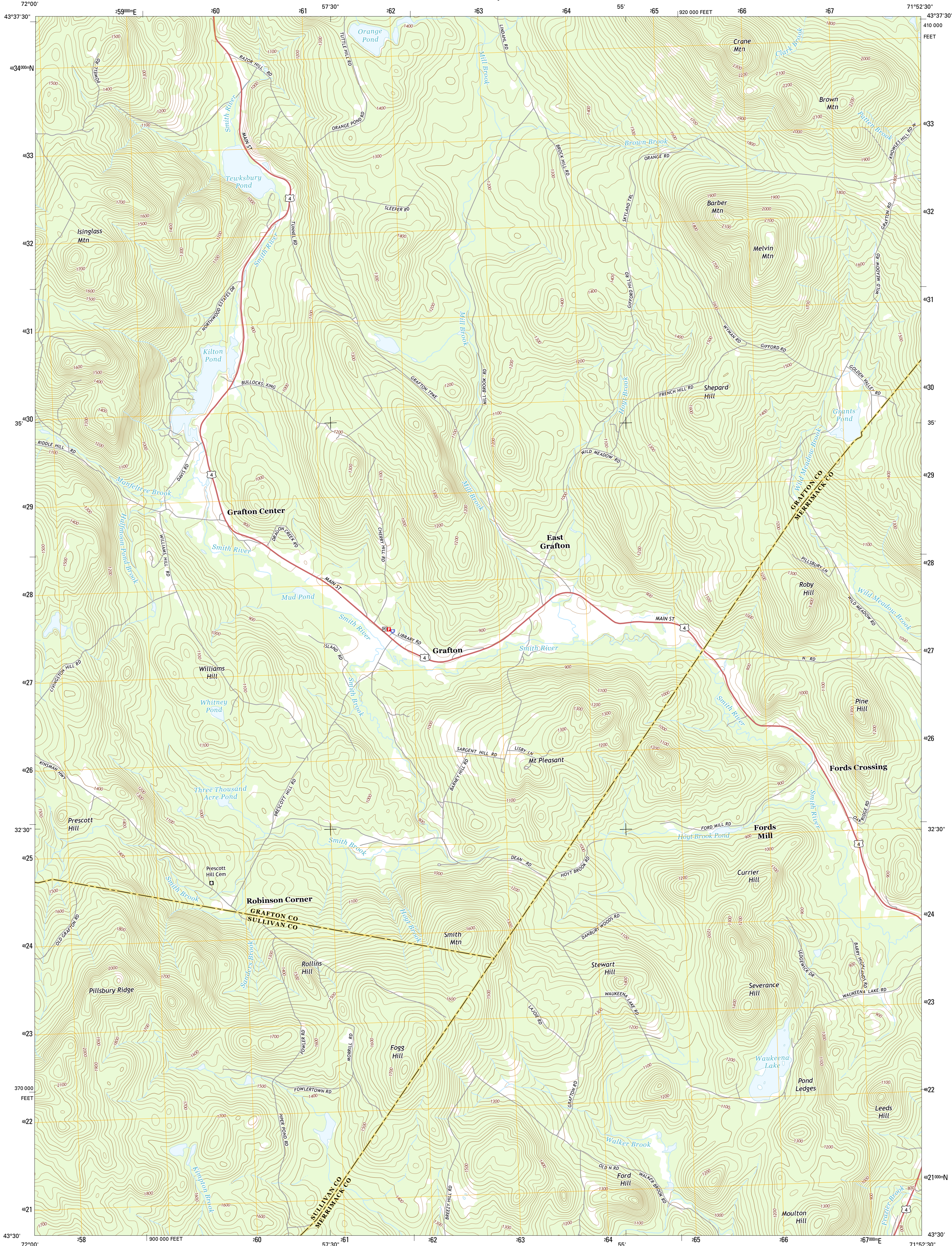




U.S. DEPARTMENT OF THE INTERIOR
U.S. GEOLOGICAL SURVEY



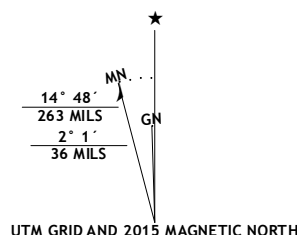
GRAFTON QUADRANGLE
NEW HAMPSHIRE
7.5-MINUTE SERIES



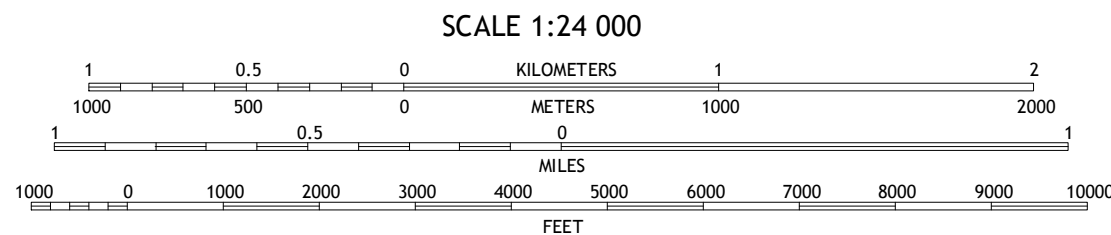
Produced by the United States Geological Survey
North American Datum of 1983 (NAD83)
World Geodetic System of 1984 (WGS84). Projection and
1 000-meter grid: Universal Transverse Mercator, Zone 19T
10 000-foot ticks: New Hampshire Coordinate System of 1983

This map is not a legal document. Boundaries may be
generalized for this map scale. Private lands within government
reservations may not be shown. Obtain permission before
entering private lands.

Imagery.....NAIP, July 2012
Roads.....HERE, 2013
Names.....GNIS, 2015
Hydrography.....National Hydrography Dataset, 2012
Contours.....National Elevation Dataset, 2002
Boundaries.....Multiple sources; see metadata file 1972 - 2015



U.S. National Grid
100,000-m Square ID
BJ
Grid Zone Designation
19T



CONTOUR INTERVAL 20 FEET
NORTH AMERICAN VERTICAL DATUM OF 1988
This map was produced to conform with the
National Geospatial Program US Topo Product Standard, 2011.
A metadata file associated with this product is draft version 0.6.18



QUADRANGLE LOCATION

1	2	3
4	5	6
7	8	9

ADJOINING QUADRANGLES

1 Canaan
2 Mount Cardigan
3 Newfound Lake
4 Griffield Center
5 Danbury
6 Sunapee Lake North
7 New London
8 Andover

ROAD CLASSIFICATION	
Expressway	Local Connector
Secondary Hwy	Local Road
Ramp	4WD
Interstate Route	US Route
	State Route

GRAFTON, NH
2015

