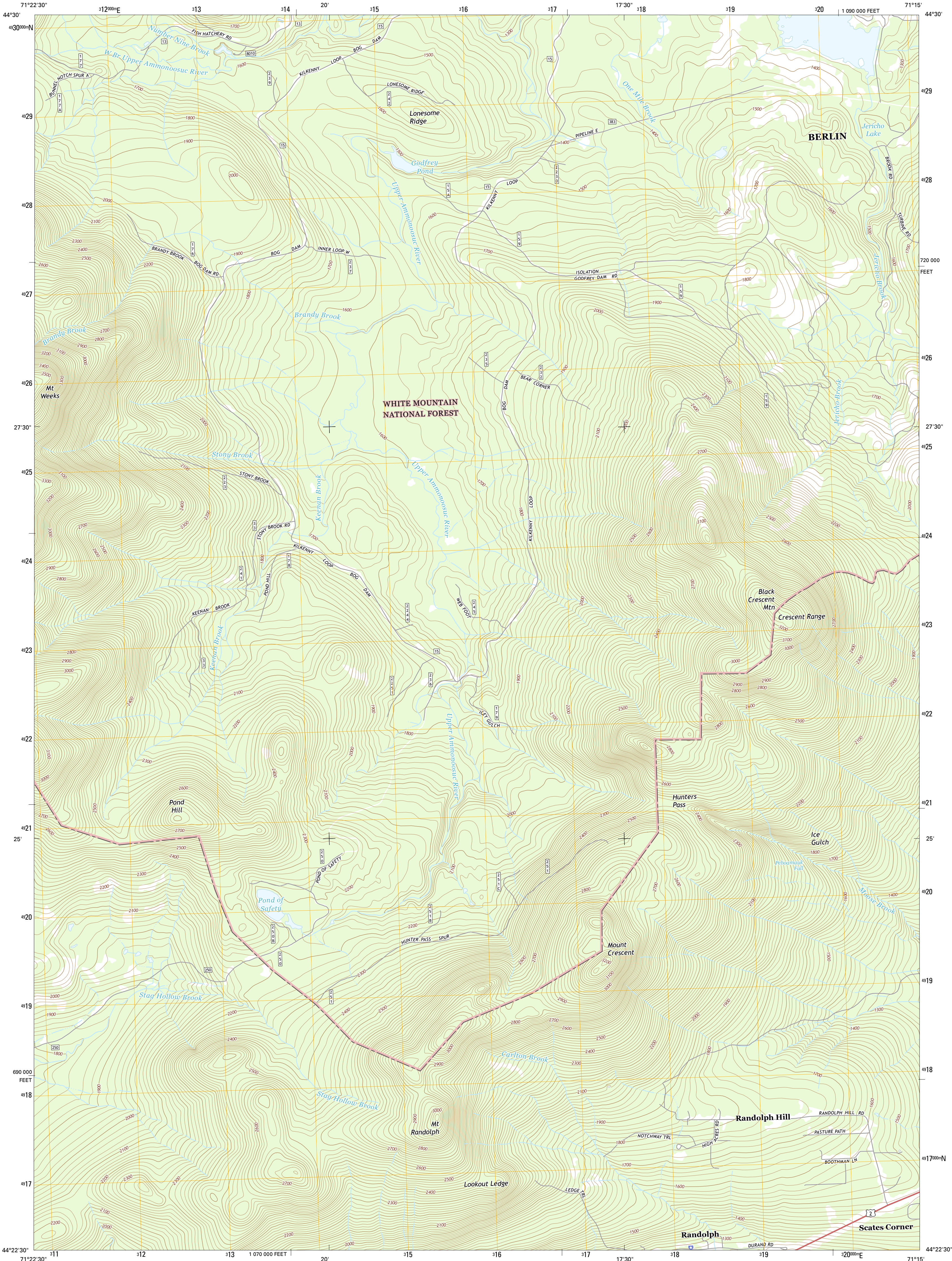




U.S. DEPARTMENT OF THE INTERIOR
U.S. GEOLOGICAL SURVEY



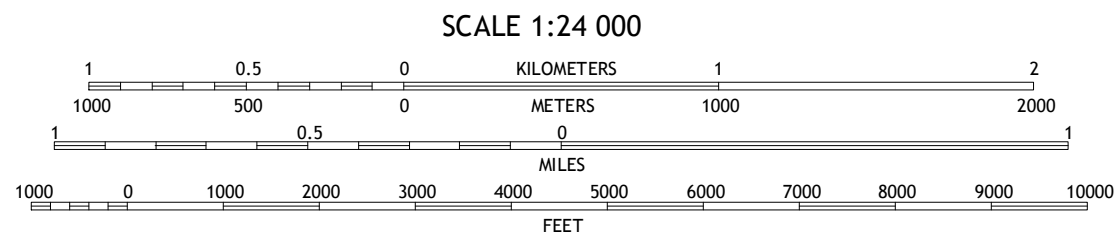
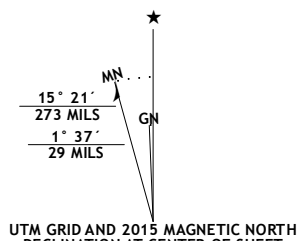
MOUNT CRESCENT QUADRANGLE
NEW HAMPSHIRE-COOS CO.
7.5-MINUTE SERIES



Produced by the United States Geological Survey
North American Datum of 1983 (NAD83)
World Geodetic System of 1984 (WGS84). Projection and
1 000-meter grid: Universal Transverse Mercator, Zone 19T
10 000-foot ticks: New Hampshire Coordinate System of 1983

This map is not a legal document. Boundaries may be
generalized for this map scale. Private lands within government
reservations may not be shown. Obtain permission before
entering private lands.

Imagery:.....NAIP, July 2012
Roads:.....HERE, ©2013 2014
Roads within US Forest Service Lands:.....FSTopo Data
with limited Forest Service updates, 2012 - 2015
Names:.....GNIS, 2015
Hydrography:.....National Hydrography Dataset, 2012
Contours:.....National Elevation Dataset, 2001
Boundaries:.....Multiple sources; see metadata file 1972 - 2015



| ROAD CLASSIFICATION | |
|---------------------|-------------------------|
| Expressway | Local Connector |
| Secondary Hwy | Local Road |
| Ramp | 4WD |
| Interstate Route | US Route |
| FS Primary Route | State Route |
| FS Passenger Route | FS High Clearance Route |

Check with local Forest Service unit
for current travel conditions and restrictions.

| | | |
|---|---|---|
| 1 | 2 | 3 |
| 4 | 5 | 6 |
| 7 | 8 | 9 |

ADJOINING QUADRANGLES

1 Stark
2 West Milan
3 Milan
4 Jefferson
5 Berlin
6 Mount Dartmouth
7 Mount Washington
8 Carter Dome

MOUNT CRESCENT, NH
2015

