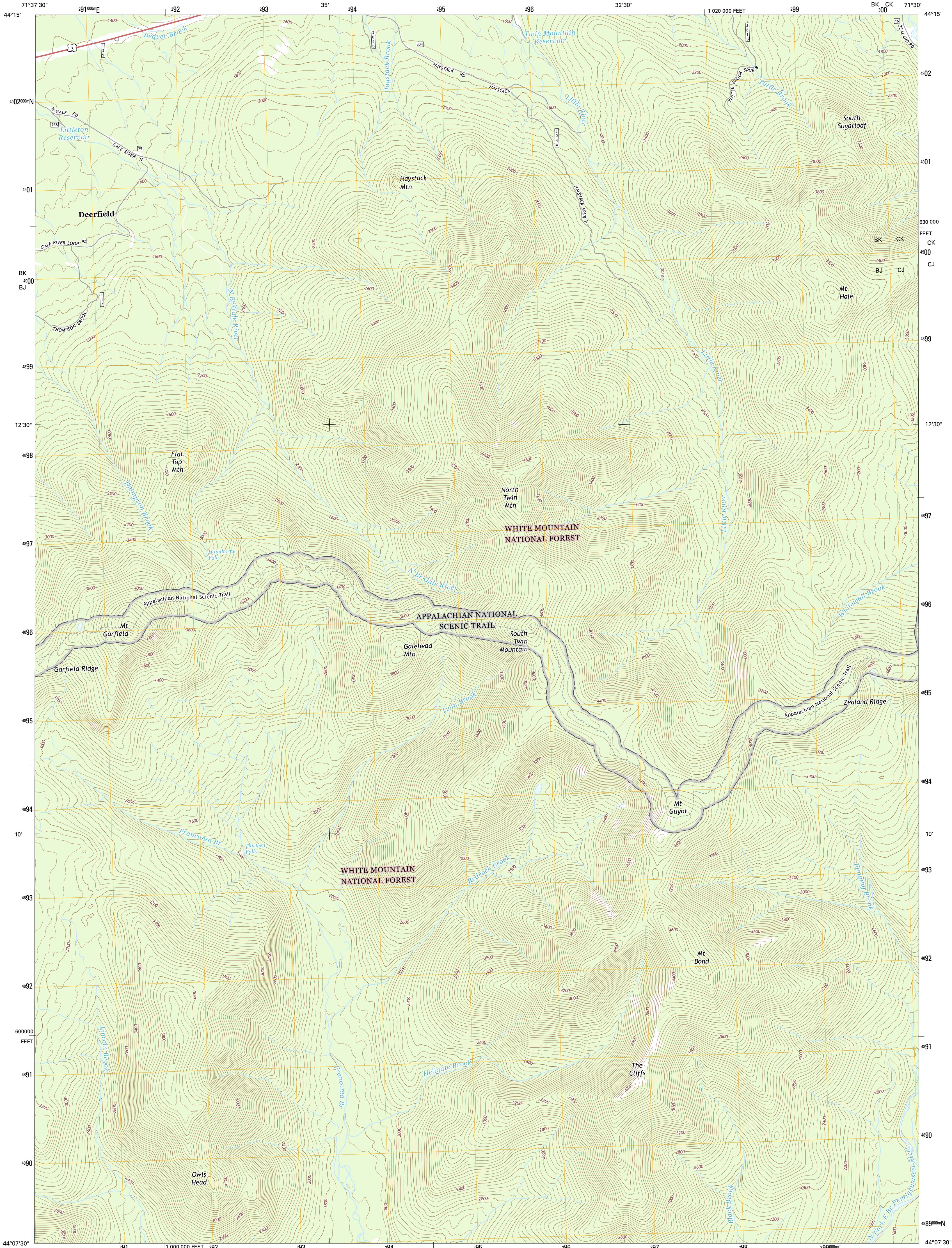




U.S. DEPARTMENT OF THE INTERIOR
U.S. GEOLOGICAL SURVEY



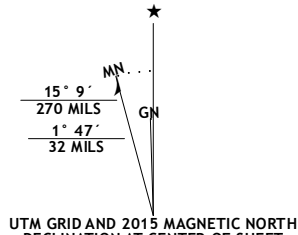
SOUTH TWIN MOUNTAIN QUADRANGLE
NEW HAMPSHIRE-GRAFTON CO.
7.5-MINUTE SERIES



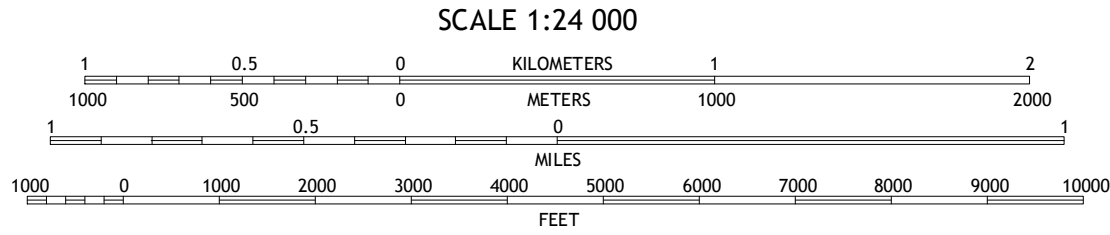
Produced by the United States Geological Survey
North American Datum of 1983 (NAD83)
World Geodetic System of 1984 (WGS84). Projection and
1 000-meter grid: Universal Transverse Mercator, Zone 19T
10 000-foot ticks: New Hampshire Coordinate System of 1983

This map is not a legal document. Boundaries may be
generalized for this map scale. Private lands within government
reservations may not be shown. Obtain permission before
entering private lands.

Imagery.....N.A.P. July 2012
Roads.....HERE, ©2013 - 2014
Roads within US Forest Service Lands.....FSTopo Data
with limited Forest Service updates, 2012 - 2015
Names.....GNIS, 2015
Hydrography.....National Hydrography Dataset, 2012
Contours.....National Elevation Dataset, 2001
Boundaries.....Multiple sources; see metadata file 1972 - 2015



U.S. National Grid
100,000 m Square ID
BK CK
BJ CJ
Grid Zone Designation
19T



CONTOUR INTERVAL 40 FEET
NORTH AMERICAN VERTICAL DATUM OF 1988

This map was produced to conform with the
National Geospatial Program US Topo Product Standard, 2011.
A metadata file associated with this product is draft version 0.6.18



QUADRANGLE LOCATION

| | | | |
|---|---|-----------------|-------------------|
| 1 | 2 | 3 | 1 Bethlehem |
| 4 | 5 | 2 Twin Mountain | 3 Mount Dartmouth |
| 6 | 7 | 4 Franconia | 5 Crawford Notch |
| 8 | 8 | 6 Lincoln | 7 Mount Osceola |
| | | | 8 Mount Carrigain |

ROAD CLASSIFICATION
Expressway
Secondary Hwy
Ramp
Interstate Route
US Route
FS Primary Route
Local Connector
Local Road
4WD
FS Passenger Route
State Route
Clearance Route

Check with local Forest Service unit
for current travel conditions and restrictions.

SOUTH TWIN MOUNTAIN, NH
2015

