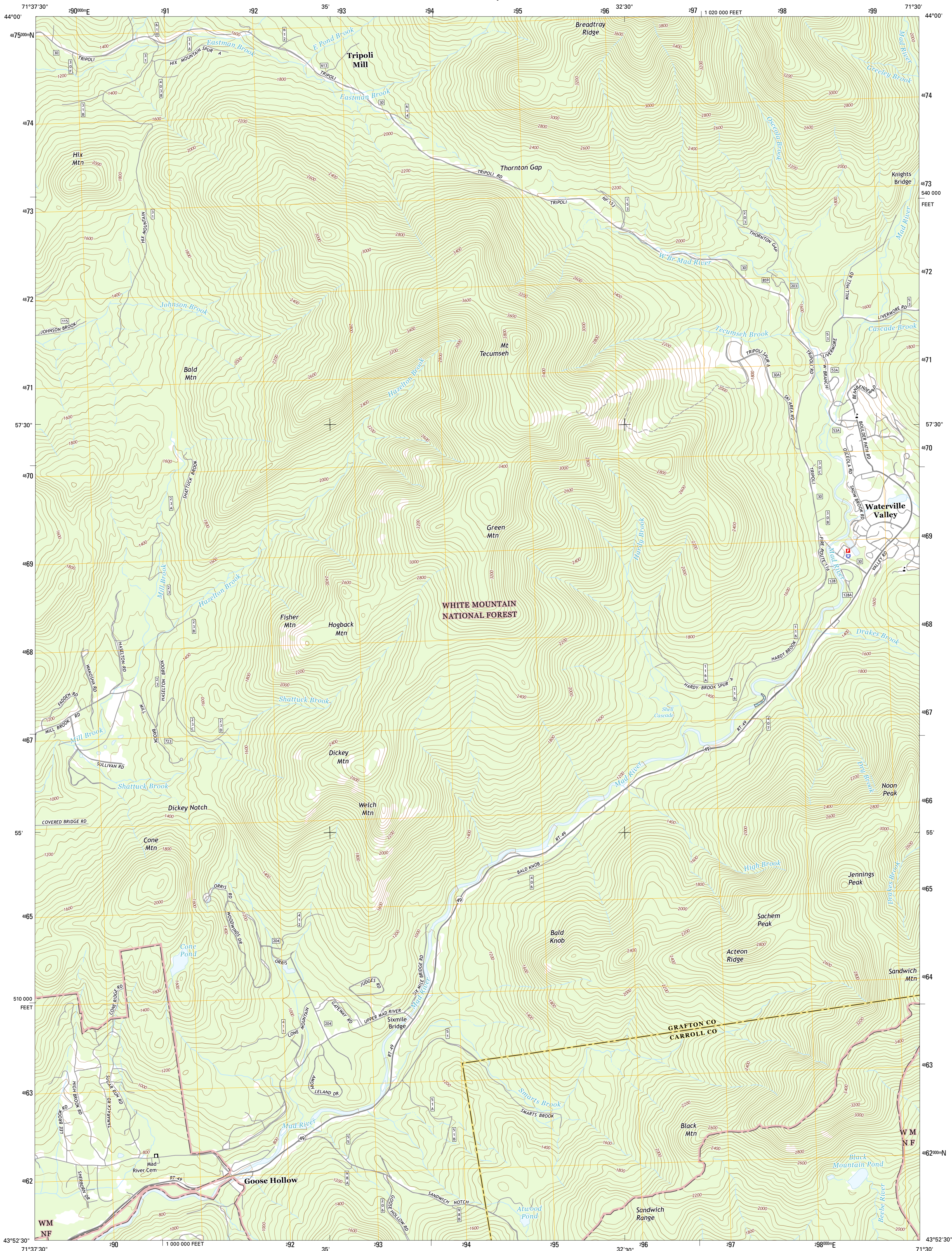




U.S. DEPARTMENT OF THE INTERIOR  
U.S. GEOLOGICAL SURVEY



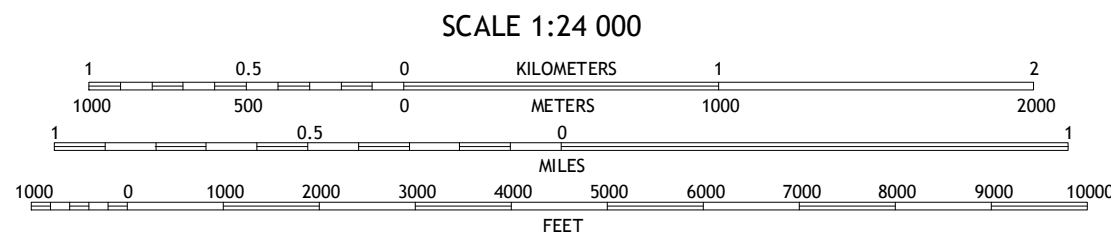
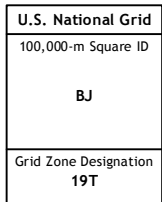
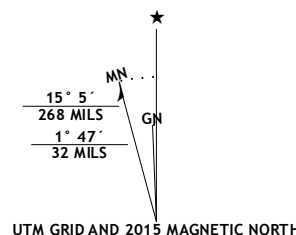
WATERVILLE VALLEY QUADRANGLE  
NEW HAMPSHIRE  
7.5-MINUTE SERIES



Produced by the United States Geological Survey  
North American Datum of 1983 (NAD83)  
World Geodetic System of 1984 (WGS84). Projection and  
1 000-meter grid: Universal Transverse Mercator, Zone 19T  
10 000-foot ticks: New Hampshire Coordinate System of 1983

This map is not a legal document. Boundaries may be  
generalized for this map scale. Private lands within government  
reservations may not be shown. Obtain permission before  
entering private lands.

Imagery.....N.A.P. July 2012  
Roads.....HERE. ©2013 - 2014  
Roads within US Forest Service Lands.....FS Topo Data  
with limited Forest Service updates, 2012 - 2015  
Names.....National Hydrography Dataset, 2012  
Contours.....National Elevation Dataset, 2001  
Boundaries.....Multiple sources; see metadata file 1972 - 2015



CONTOUR INTERVAL 40 FEET  
NORTH AMERICAN VERTICAL DATUM OF 1988  
This map was produced to conform with the  
National Geospatial Program US Topo Product Standard, 2011.  
A metadata file associated with this product is draft version 0.6.18



1	2	3
4	5	6
7	8	9

ADJOINING QUADRANGLES

1 Lincoln  
2 Mount Osceola  
3 Mount Carrigan  
4 Woodstock  
5 Mount Tripyramid  
6 Plymouth  
7 Squam Mountains  
8 Center Sandwich

ROAD CLASSIFICATION		
Expressway	Local Connector	Local Road
Secondary Hwy	4WD	
Ramp		
Interstate Route	US Route	State Route
FS Primary Route	FS Passenger Route	FS High Clearance Route

Check with local Forest Service unit  
for current travel conditions and restrictions.

WATERVILLE VALLEY, NH  
2015

