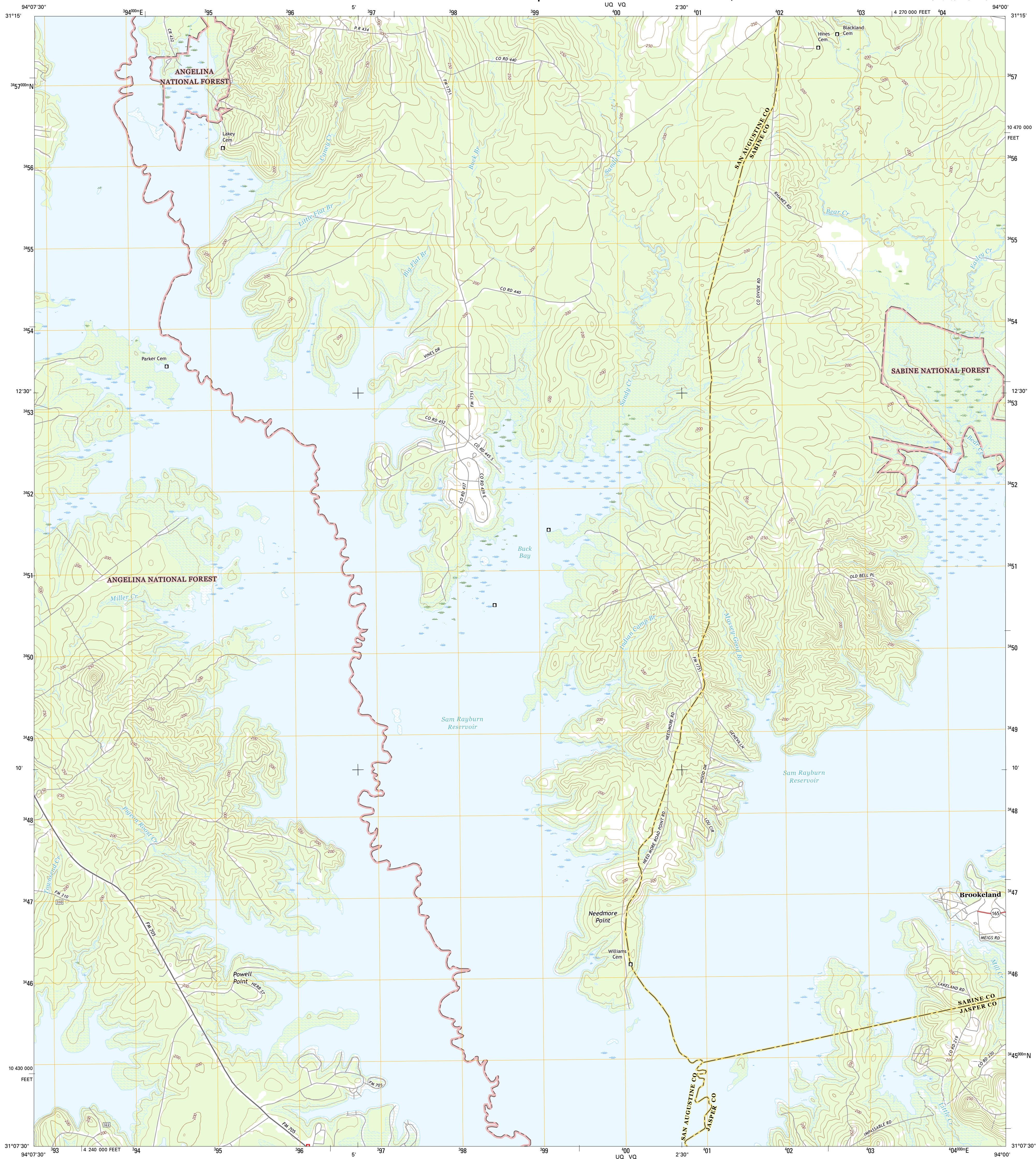




BUCK BAY QUADRANGLE
TEXAS
7.5-MINUTE SERIES



Produced by the United States Geological Survey
North American Datum of 1983 (NAD83)
World Geodetic System of 1984 (WGS84). Projection and
1 000-meter grid: Universal Transverse Mercator, Zone 15R
10 000-foot ticks: Texas Coordinate System of 1983 (central
zone)

This map is not a legal document. Boundaries may be generalized for this map scale. Private lands within government reservations may not be shown. Obtain permission before entering private lands.

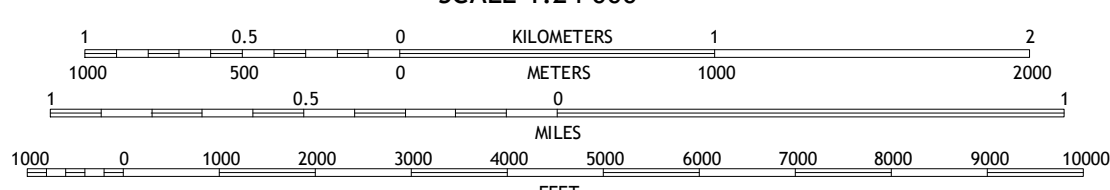
Imagery.....	NAIP,	October	2014
Roads.....	U.S. Census Bureau,	2014	2015
Roads within	US Forest Service Lands.....	FSTPO	Data
	with limited Forest Service updates,	2012	2015
Names.....	GNIS,		
Hydrography.....	National Hydrography Dataset,		2014
Contours.....	National Elevation Dataset,		2003
Boundaries.....	Multiple sources; see metadata file	1972	2015
Wetlands.....	FWS National Wetlands Inventory	1977 -	2014

Wetlands.....FWS National Wetlands Inventory 1977 - 2014

UTM GRID AND 2016 MAGNETIC NORTH DECLINATION AT CENTER OF SHEET

<p>U.S. National Grid</p> <p>100,000-m Square ID</p> <p>400 UQ VQ</p> <p>Grid Zone Designation 15R</p>
--

SCALE 1:24 000



CONTOUR INTERVAL 10 FEET
NORTH AMERICAN VERTICAL DATUM OF 1988

This map was produced to conform with the
National Geospatial Program US Topo Product Standard, 2011.
A metadata file associated with this product is draft version 0.6.19











QUADRANGLE LOCATION

1	2	3
4		5
6	7	8

ADJOINING QUADRANGLE

ADJOINING QUADRANGLE

ROAD CLASSIFICATION

- | | | | |
|---------------|---|-----------------|---|
| Expressway | | Local Connector | |
| Secondary Hwy | | Local Road | |
| Ramp |  | 4WD |  |
-
- | | | |
|--|--|---|
|  Interstate Route |  US Route |  State Route |
|  FS Primary Route |  FS Passenger Route |  FS High Clearance Route |

Check with local Forest Service unit
for current travel conditions and restrictions.

BUCK BAY, TX
2016

