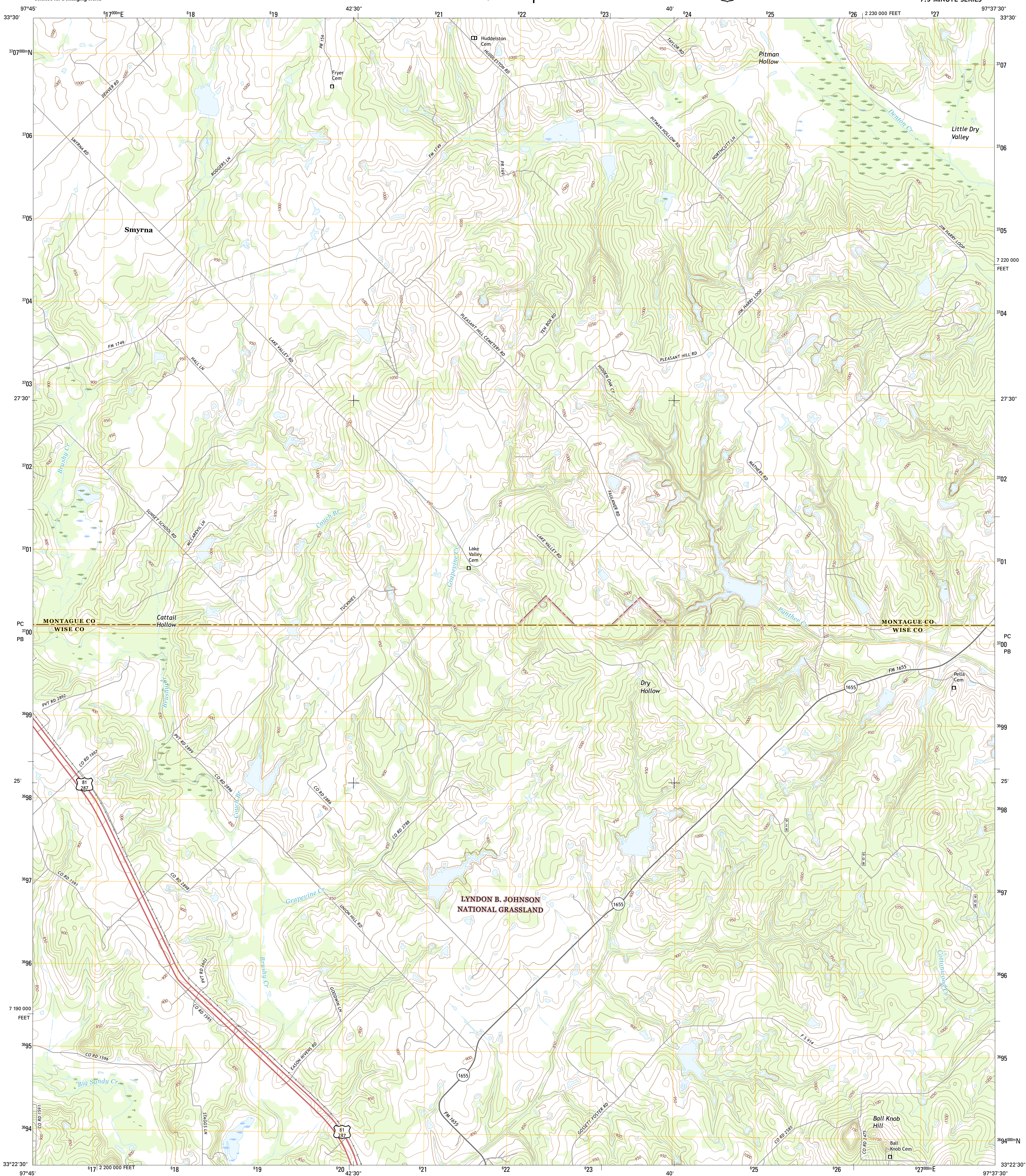




**SMYRNA QUADRANGLE**  
**TEXAS**  
**7.5-MINUTE SERIES**



Produced by the United States Geological Survey

Produced by the United States Geological Survey  
North American Datum of 1983 (NAD83)  
World Geodetic System of 1984 (WGS84). Projection and  
1 000-meter grid: Universal Transverse Mercator, Zone 14S  
10 000-foot ticks: Texas Coordinate System of 1983 (north  
central zone)

This map is not a legal document. Boundaries may be generalized for this map scale. Private lands within government reservations may not be shown. Obtain permission before entering private lands.

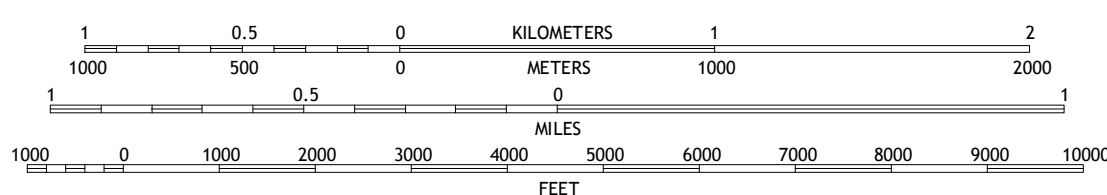
Imagery.....	NAIP, July	2014
Roads.....	U.S. Census Bureau, 2014	2015
Roads within US Forest Service Lands.....	FSTopo Data	2014
	with limited Forest Service updates, 2012	2015
Names.....	GNIS, 2015	2015
Hydrography.....	National Hydrography Dataset, 2014	2014
Contours.....	National Elevation Dataset, 2002	2005
Boundaries.....	Multiple sources; see metadata file	1972 - 2015
Wetlands.....	FWS National Wetlands Inventory	1977 - 2014

Wetlands.....FWS National Wetlands Inventory 1977 - 2014

UTM GRID AND 2016 MAGNETIC NORTH  
DECLINATION AT CENTER OF SHEET

U.S. National Grid
100,000-m Square ID
$\frac{PC}{PB}^{3700}$
Grid Zone Designation
14S

SCALE 1:24 000



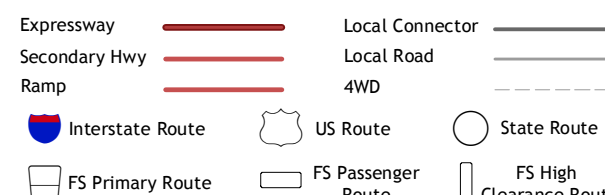
CONTOUR INTERVAL 10 FEET  
NORTH AMERICAN VERTICAL DATUM OF 1988

This map was produced to conform with the  
National Geospatial Program US Topo Product Standard, 2011.  
A metadata file associated with this product is draft version 0.6.19



QUADRANGLE LOCATION

## ROAD CLASSIFICATION



Check with local Forest Service unit  
for current travel conditions and restrictions

1	2	3	1 Bowie
4		5	2 Salona
6	7	8	3 Forestburg

ADJOINING QUADRANGLES

4 Sunset  
5 New Harp  
6 Chico  
7 Alvord  
8 Pecan Creek

ES

SMYRNA, TX  
2016