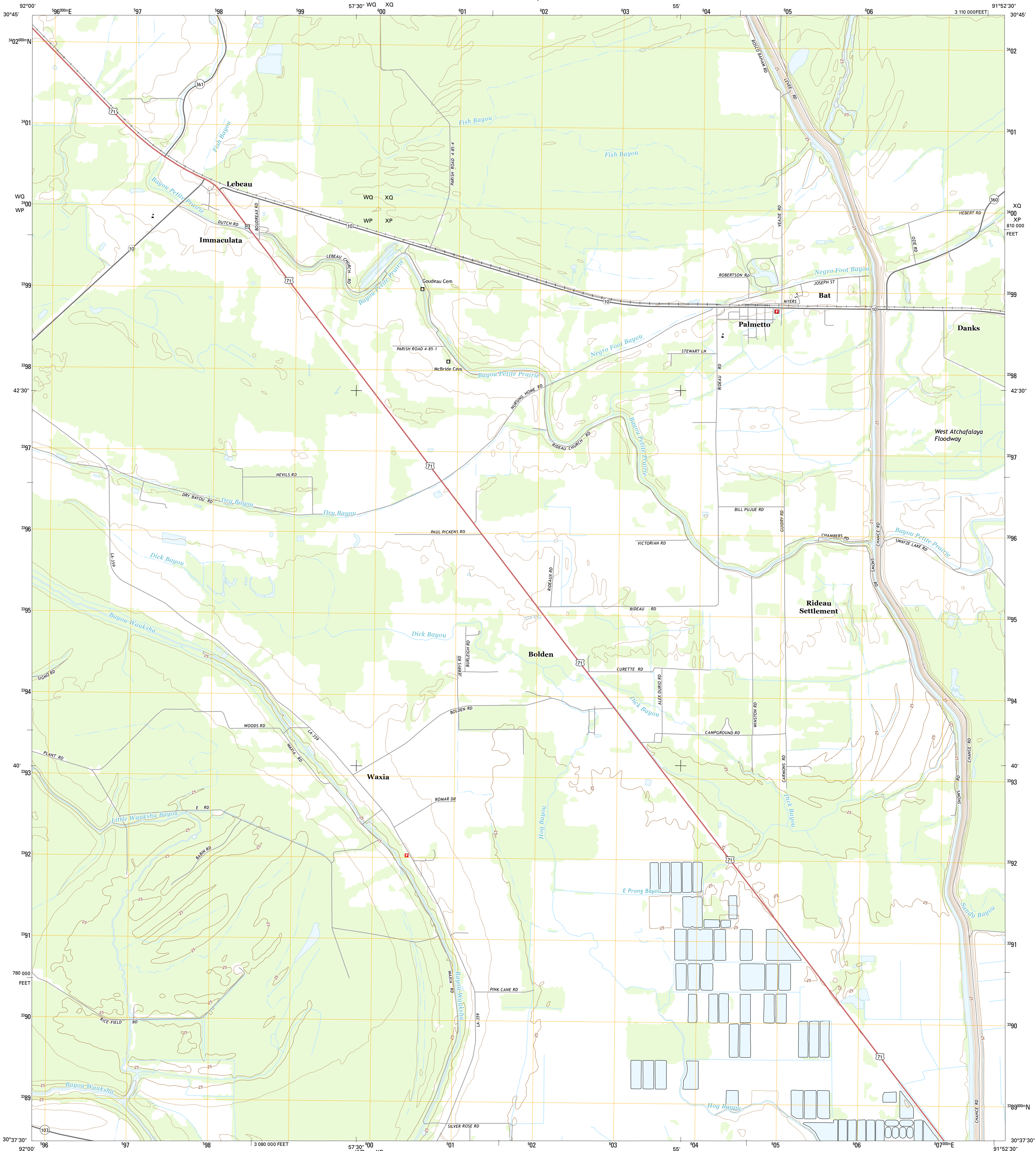




U.S. DEPARTMENT OF THE INTERIOR
U.S. GEOLOGICAL SURVEY



PALMETTO QUADRANGLE
LOUISIANA-ST. LANDRY PARISH
7.5-MINUTE SERIES



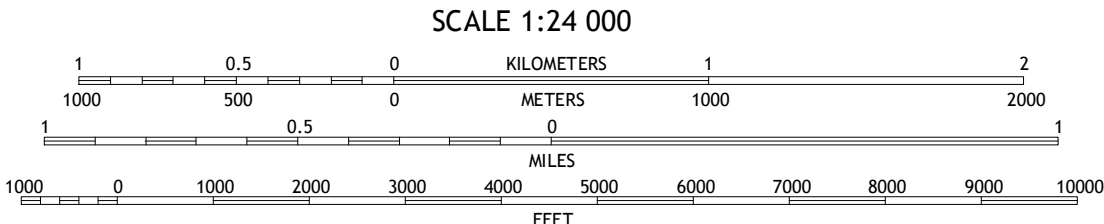
Produced by the United States Geological Survey
North American Datum of 1983 (NAD83)
World Geodetic System of 1984 (WGS84), Projection and
1 000-meter grid; Universal Transverse Mercator, Zone 15R
10 000-foot ticks; Louisiana Coordinate System of 1983 (south
zone)

This map is not a legal document. Boundaries may be
generalized for this map scale. Private lands within government
reservations may not be shown. Obtain permission before
entering private lands.

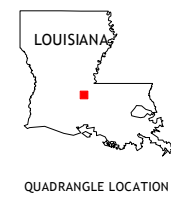
Imagery.....NAIP, June 2013
Roads.....HERE, ©2013 - 2014
Names.....GNIS, 2015
Hydrography.....National Hydrography Dataset, 2013
Contours.....National Elevation Dataset, 2008
Boundaries.....Multiple sources; see metadata file 1972 - 2015
Public Land Survey System.....BLM, 2015

UTM GRID AND 2015 MAGNETIC NORTH
DECLINATION AT CENTER OF SHEET

U.S. National Grid
100,000-m Square ID
WQ
WP
Grid Zone Designation
15R



CONTOUR INTERVAL 5 FEET
NORTH AMERICAN VERTICAL DATUM OF 1988
This map was produced to conform with the
National Geospatial Program US Topo Product Standard, 2011.
A metadata file associated with this product is draft version 0.6.18



ROAD CLASSIFICATION

Expressway	Secondary Hwy	Ramp	Local Connector	Local Road	4WD	US Route	State Route
Thick red line	Thin red line	Red line with blue border	Thin black line	Thin black line	Thin black line	Thick black line	Thin black line

1	2	3	1 Morrow
4	5	6	2 Bayou Jack
7	8	9	3 Bayou Current
10	11	12	4 Beggs
13	14	15	5 Swayze Lake
16	17	18	6 Opelousas
19	20	21	7 Port Barre
22	23	24	8 Krotz Springs

PALMETTO, LA
2015

