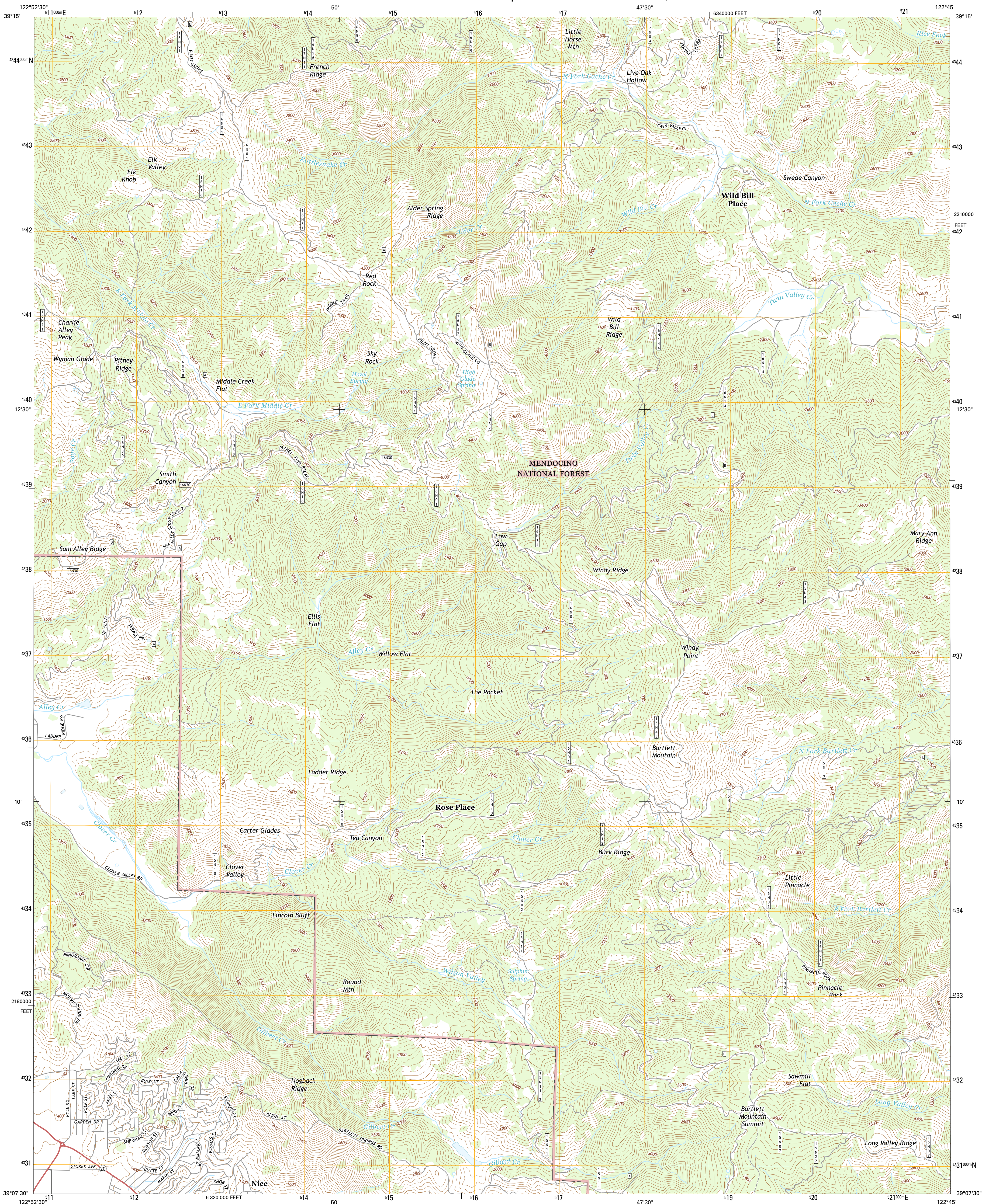




U.S. DEPARTMENT OF THE INTERIOR
U.S. GEOLOGICAL SURVEY



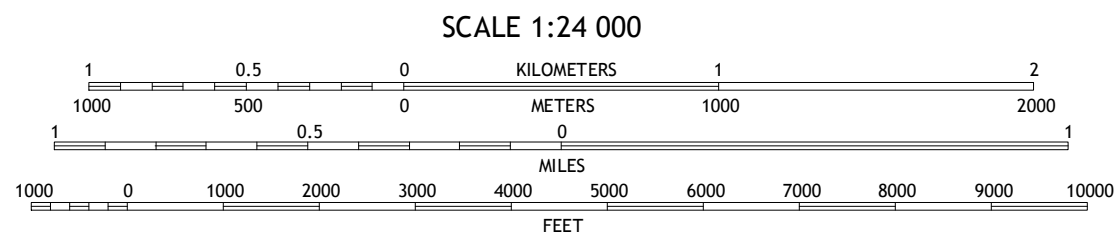
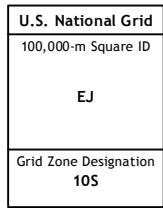
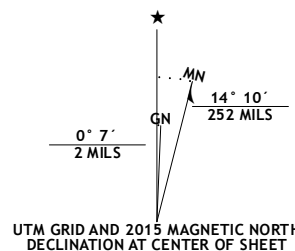
BARTLETT MOUNTAIN QUADRANGLE
CALIFORNIA-LAKE CO.
7.5-MINUTE SERIES



Produced by the United States Geological Survey
North American Datum of 1983 (NAD83)
World Geodetic System of 1984 (WGS84), Projection and
1 000-meter grid; Universal Transverse Mercator, Zone 10S
10 000-foot ticks; California Coordinate System of 1983 (zone 2)

This map is not a legal document. Boundaries may be
generalized for this map scale. Private lands within government
reservations may not be shown. Obtain permission before
entering private lands.

Imagery.....NAIP, May 2012
Roads.....HERE, ©2013 - 2014
Data with limited Forest Service updates, 2012 - 2015
Names.....GNIS, 2015
Hydrography.....National Hydrography Dataset, 2012
Contours.....National Elevation Dataset, 2001
Boundaries.....Multiple sources; see metadata file 1972 - 2015
Public Land Survey System.....BLM, 2011

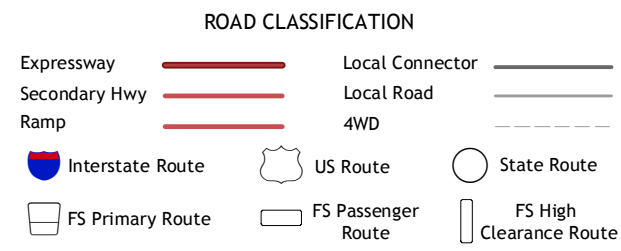


This map was produced to conform with the
National Geospatial Program US Topo Product Standard, 2011.
A metadata file associated with this product is draft version 0.6.18



1	2	3
4	5	6
7	8	

1 Elk Mountain
2 Potato Hill
3 Fouts Springs
4 Upper Lake
5 Bartlett Springs
6 Lakeport
7 Lucerne
8 Clearlake Oaks



Check with local Forest Service unit
for current travel conditions and restrictions.

BARTLETT MOUNTAIN, CA
2015

