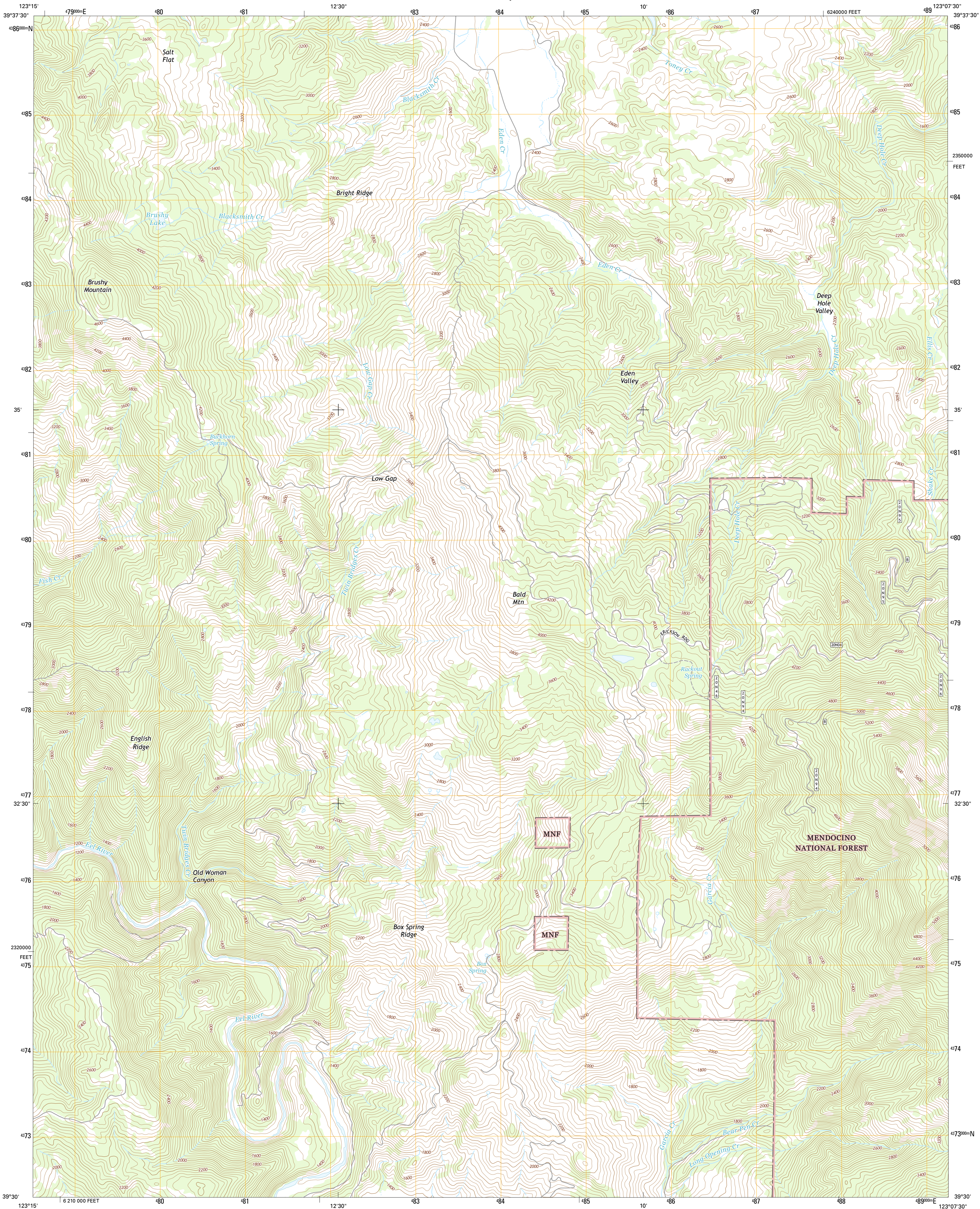




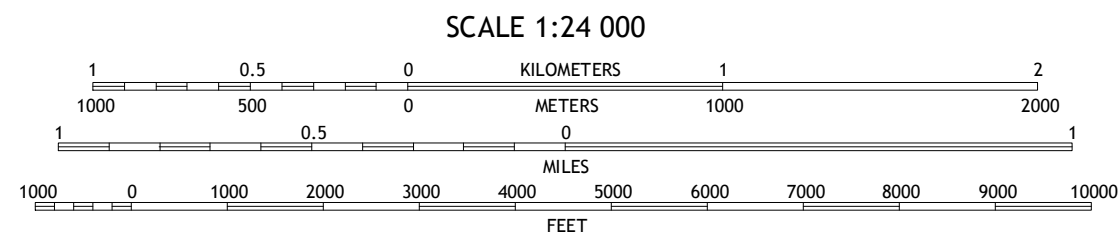
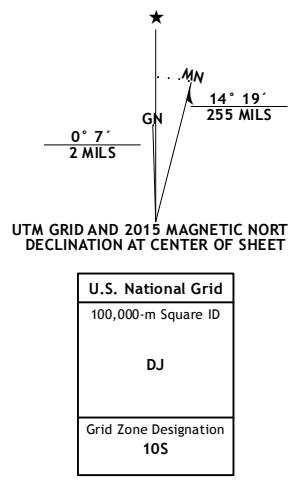
U.S. DEPARTMENT OF THE INTERIOR
U.S. GEOLOGICAL SURVEY



BRUSHY MOUNTAIN QUADRANGLE
CALIFORNIA-MENDOCINO CO.
7.5-MINUTE SERIES



Produced by the United States Geological Survey
North American Datum of 1983 (NAD83)
World Geodetic System of 1984 (WGS84). Projection and
1 000-meter grid: Universal Transverse Mercator, Zone 10S
10 000-foot ticks: California Coordinate System of 1983 (zone 2)
This map is not a legal document. Boundaries may be
generalized for this map scale. Private lands within government
reservations may not be shown. Obtain permission before
entering private lands.
Imagery.....NAIP, May 2012
Roads within US Forest Service Lands.....HERE, ©2013 - 2014
with limited Forest Service updates, 2012 - 2015
Names.....GNIS, 2015
Hydrography.....National Hydrography Dataset, 2012
Contours.....National Elevation Dataset, 2001
Boundaries.....Multiple sources; see metadata file 1972 - 2015
Public Land Survey System.....BLM, 2011



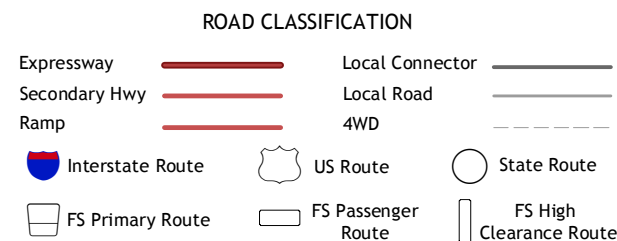
CONTOUR INTERVAL 40 FEET
NORTH AMERICAN VERTICAL DATUM OF 1988
This map was produced to conform with the
National Geospatial Program US Topo Product Standard, 2011.
A metadata file associated with this product is draft version 0.6.18



1	2	3
4	5	6
7	8	9

ADJOINING QUADRANGLES

1 Dos Rios
2 Jamison Ridge
3 Thatcher Ridge
4 Willis Ridge
5 Sanhedrin Mountain
6 Willis
7 Foster Mountain
8 Van Arsdale Reservoir



Check with local Forest Service unit
for current travel conditions and restrictions.

BRUSHY MOUNTAIN, CA
2015

