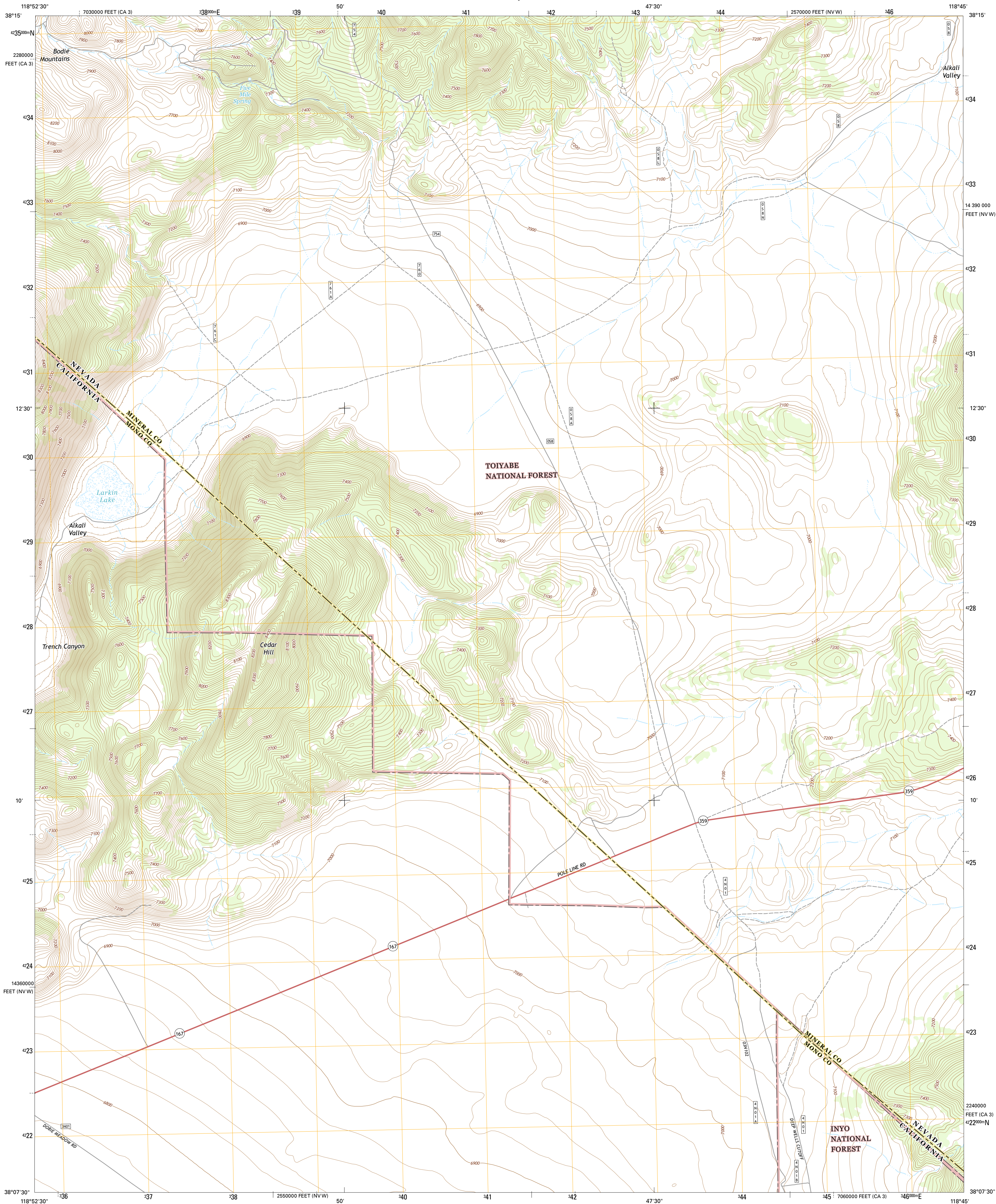




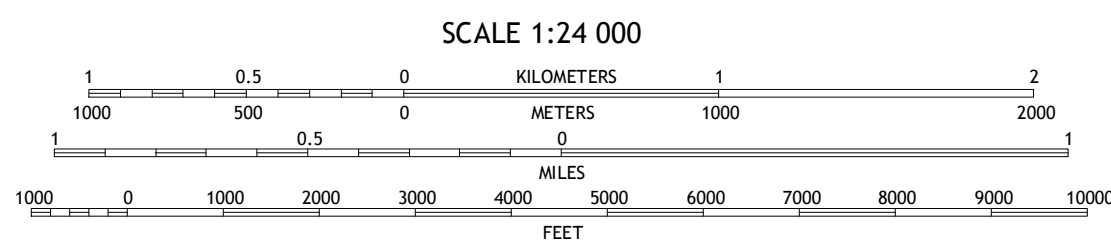
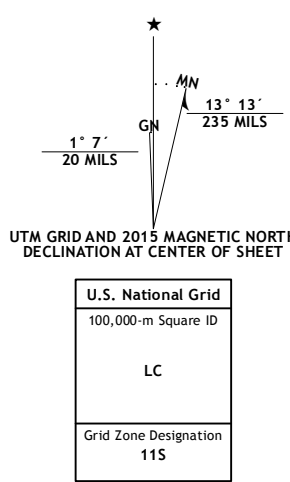
U.S. DEPARTMENT OF THE INTERIOR
U.S. GEOLOGICAL SURVEY



CEDAR HILL QUADRANGLE
CALIFORNIA-NEVADA
7.5-MINUTE SERIES



Produced by the United States Geological Survey
North American Datum of 1983 (NAD83)
World Geodetic System of 1984 (WGS84)
1 000-meter grid: Universal Transverse Mercator, Zone 11S
10 000-foot ticks: Nevada Coordinate System of 1983 (west zone), California Coordinate System of 1983 (zone 3)
This map is not a legal document. Boundaries may be generalized for this map scale. Private lands within government reservations may not be shown. Obtain permission before entering private lands.
Imagery.....NAIP, August 2013
Roads within US Forest Service Lands.....HERE, ©2013 - 2014
Roads within US Forest Service Lands.....FSTopo Data with limited Forest Service updates, 2012 - 2015
Names.....GNIS, 2015
Hydrography.....National Hydrography Dataset, 2013
Contours.....National Elevation Dataset, 2001
Boundaries.....Multiple sources; see metadata file 1972 - 2015
Public Land Survey System.....BLM, 2011



CONTOUR INTERVAL 20 FEET
NORTH AMERICAN VERTICAL DATUM OF 1988
This map was produced to conform with the National Geospatial Program US Topo Product Standard, 2011. A metadata file associated with this product is draft version 0.6.18



1	2	3
4	5	6
7	8	9

ADJOINING QUADRANGLES

1 Aurora
2 Mount Hicks
3 Powell Mountain
4 Kirkwood Spring
5 Anchorite Hills
6 Sulphur Pond
7 Alameda Well
8 West of Hutton Spring

ROAD CLASSIFICATION

Expressway	Local Connector
Secondary Hwy	Local Road
Ramp	4WD
Interstate Route	US Route
FS Primary Route	FS Passenger Route
	FS High Clearance Route

Check with local Forest Service unit for current travel conditions and restrictions.

CEDAR HILL, CA-NV
2015

