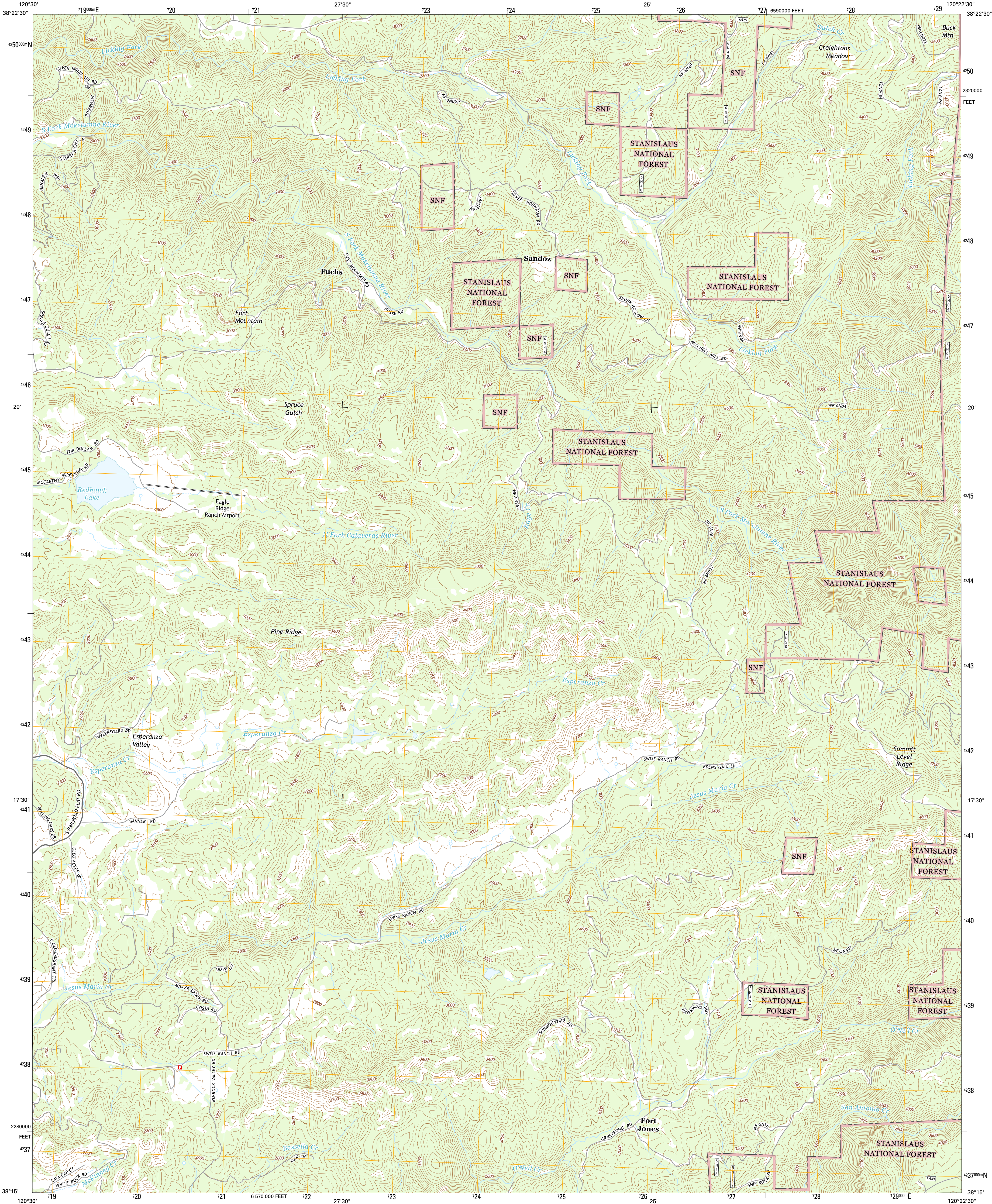




U.S. DEPARTMENT OF THE INTERIOR  
U.S. GEOLOGICAL SURVEY



FORT MOUNTAIN QUADRANGLE  
CALIFORNIA-CALAVERAS CO.  
7.5-MINUTE SERIES



Produced by the United States Geological Survey  
North American Datum of 1983 (NAD83). Projection and  
World Geodetic System of 1984 (WGS84). Projection and  
1 000-meter grid: Universal Transverse Mercator, Zone 10S  
10 000-foot ticks: California Coordinate System of 1983 (zone 3)  
This map is not a legal document. Boundaries may be  
generalized for this map scale. Private lands within government  
reservations may not be shown. Obtain permission before  
entering private lands.  
Imagery.....NAIP, June 2012  
Roads.....HERE, ©2013 - 2014  
Roads within US Forest Service Lands.....FSTopo Data  
with limited Forest Service updates, 2012 - 2015  
Names.....GNH, 2015  
Hydrography.....National Hydrography Dataset, 2012  
Contours.....National Elevation Dataset, 2013  
Boundaries.....Multiple sources; see metadata file 1972 - 2015  
Public Land Survey System.....BLM, 2011

UTM GRID AND 2015 MAGNETIC NORTH  
DECLINATION AT CENTER OF SHEET  
U.S. National Grid  
100,000-m Square ID  
GH  
Grid Zone Designation  
10S

SCALE 1:24 000  
1 0.5 0 1 2  
1000 500 0 1000 2000  
KILOMETERS  
1 0.5 0 1 2  
1000 500 0 1000 2000  
METERS  
1 0.5 0 1 2  
1000 500 0 1000 2000  
MILES  
1 0.5 0 1 2  
1000 500 0 1000 2000  
FEET  
CONTOUR INTERVAL 40 FEET  
NORTH AMERICAN VERTICAL DATUM OF 1988  
This map was produced to conform with the  
National Geospatial Program US Topo Product Standard, 2011.  
A metadata file associated with this product is draft version 0.6.18



ROAD CLASSIFICATION  
Expressway  
Secondary Hwy  
Ramp  
Interstate Route  
FS Primary Route  
Local Connector  
Local Road  
4WD  
US Route  
FS Passenger Route  
State Route  
FS High Clearance Route  
Check with local Forest Service unit  
for current travel conditions and restrictions.

1	2	3
4	5	6
7	8	9

ADJOINING QUADRANGLES

FORT MOUNTAIN, CA  
2015

