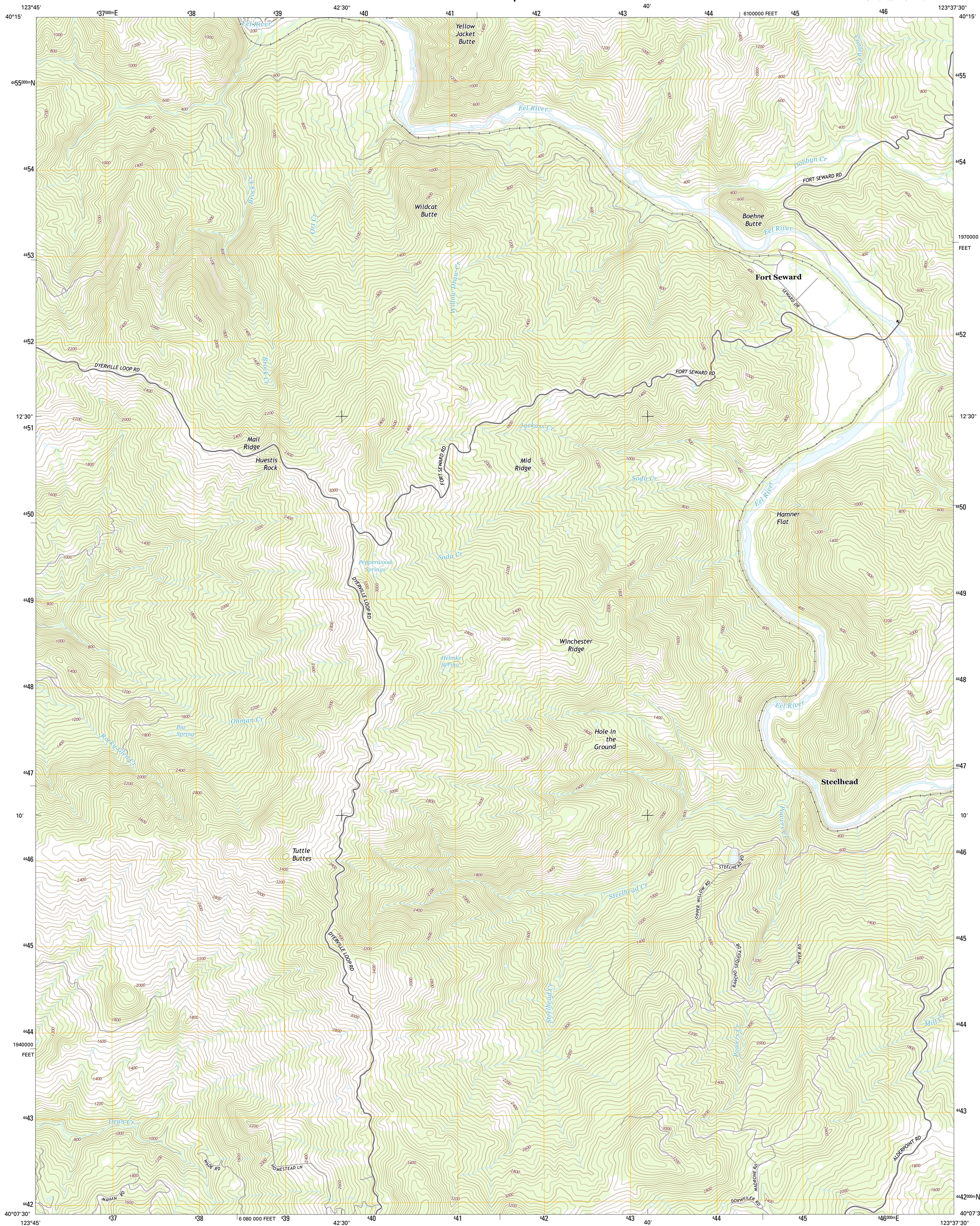




U.S. DEPARTMENT OF THE INTERIOR
U.S. GEOLOGICAL SURVEY

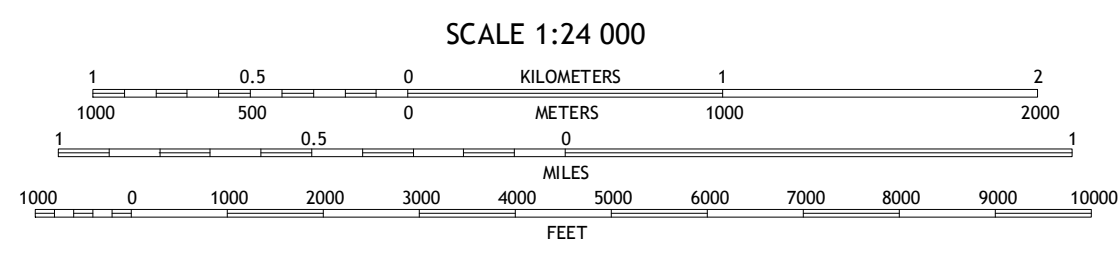
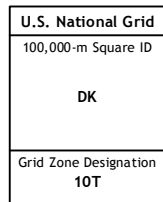
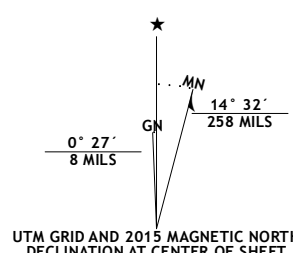


FORT SEWARD QUADRANGLE
CALIFORNIA-HUMBOLDT CO.
7.5-MINUTE SERIES



Produced by the United States Geological Survey
North American Datum of 1983 (NAD83)
World Geodetic System of 1984 (WGS84). Projection and
1 000-meter grid: Universal Transverse Mercator, Zone 10T
10 000-foot ticks: California Coordinate System of 1983 (zone 1)

Imagery.....	NAIP, June	2012
Roads.....	HERE, ©2013	2014
Names.....	GNIS,	2015
Hydrography.....	National Hydrography Dataset,	2012
Contours.....	National Elevation Dataset,	1999
Boundaries.....	Multiple sources; see metadata file	1972 - 2015
Public Land Survey System.....	BLM,	2011

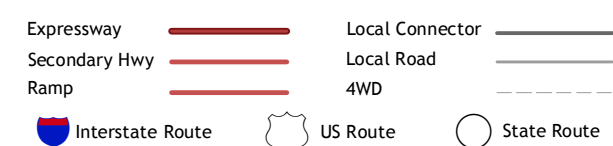


CONTOUR INTERVAL 40 FEET
NORTH AMERICAN VERTICAL DATUM OF 1988

This map was produced to conform with the
National Geospatial Program US Topo Product Standard, 2011.
A metadata file associated with this product is draft version 0.6.18



ROAD CLASSIFICATION



1	2	3	1 Myers Flat
4		5	2 Blocksburg
6	7	8	3 Black Lassic

4 Miranda
5 Alderpoint
6 Garberville
7 Harris
8 Jewett Rock

JOINING QUADRANGLES

FORT SEWARD, CA
2015

