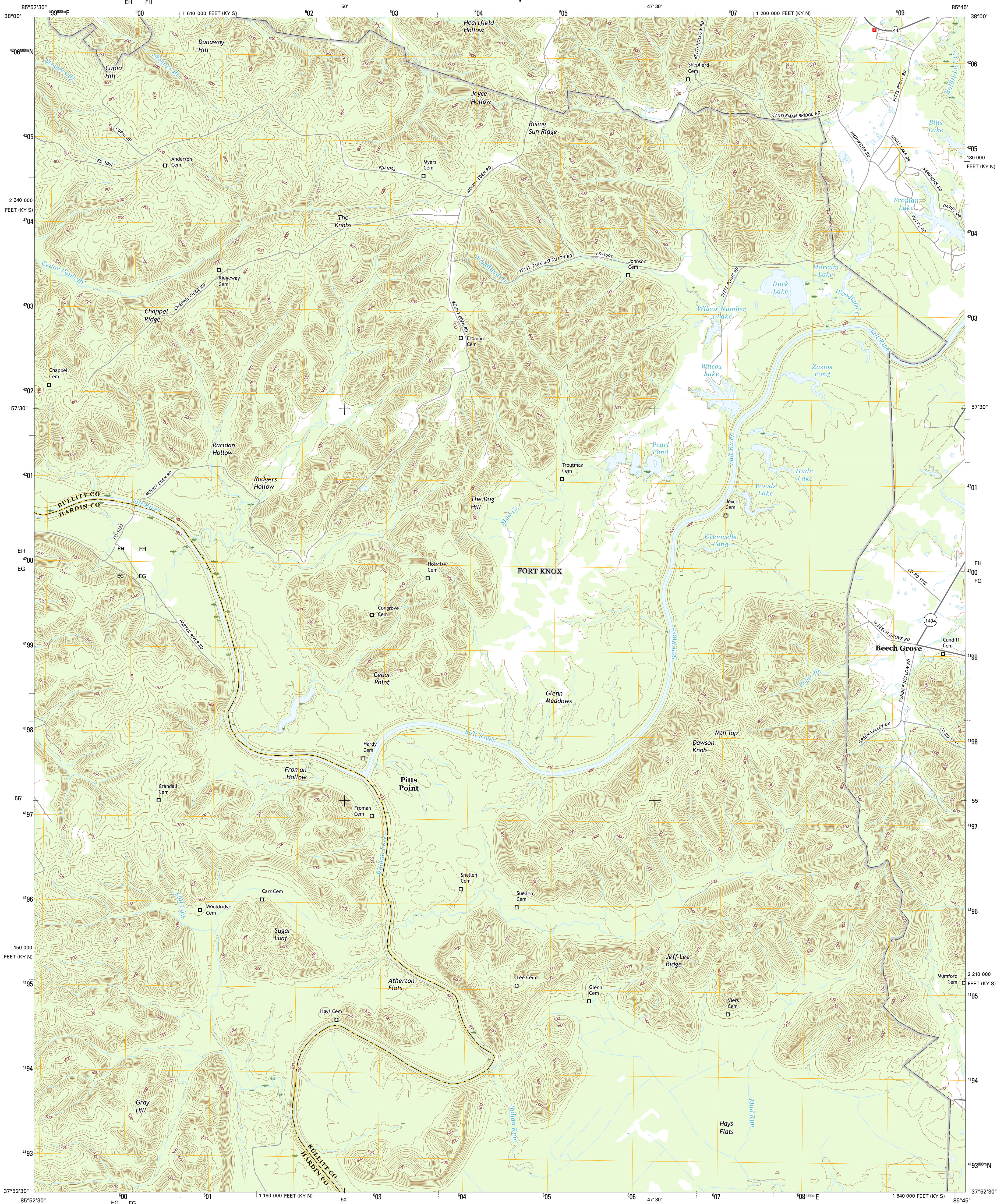




U.S. DEPARTMENT OF THE INTERIOR
U.S. GEOLOGICAL SURVEY



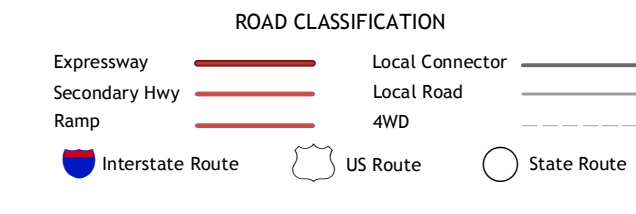
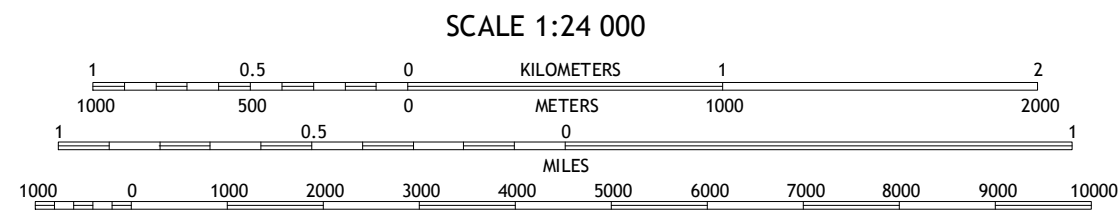
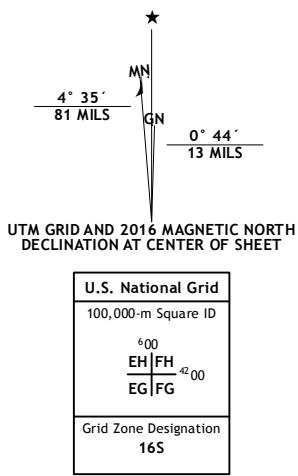
PITTS POINT QUADRANGLE
KENTUCKY
7.5-MINUTE SERIES



Produced by the United States Geological Survey
North American Datum of 1983 (NAD83)
World Geodetic System of 1984 (WGS84) - Projection and
1 000-meter grid: Universal Transverse Mercator, Zone 16S
10 000-foot ticks: Kentucky Coordinate System of 1983 (north
and south zones)

This map is not a legal document. Boundaries may be
generalized for this map scale. Private lands within government
reservations may not be shown. Obtain permission before
entering private lands.

Images:.....N.A.P., July 2014
Roads:.....U.S. Census Bureau, 2014 - 2015
Names:.....GNIS, 2015
Hydrography:.....National Hydrography Dataset, 2014
Contours:.....National Elevation Dataset, 2002
Boundaries:.....Multiple sources; see metadata file 1972 - 2015
Wetlands:.....FWS National Wetlands Inventory 1977 - 2014



1	2	3
4	5	6
7	8	9

ADJOINING QUADRANGLES

1 Kosmosdale
2 Valley Station
3 Brooks
4 Fort Knox
5 Shepherdsville
6 Vine Grove
7 Lebanon Junction
8 Lebanon Junction

PITTS POINT, KY
2016

