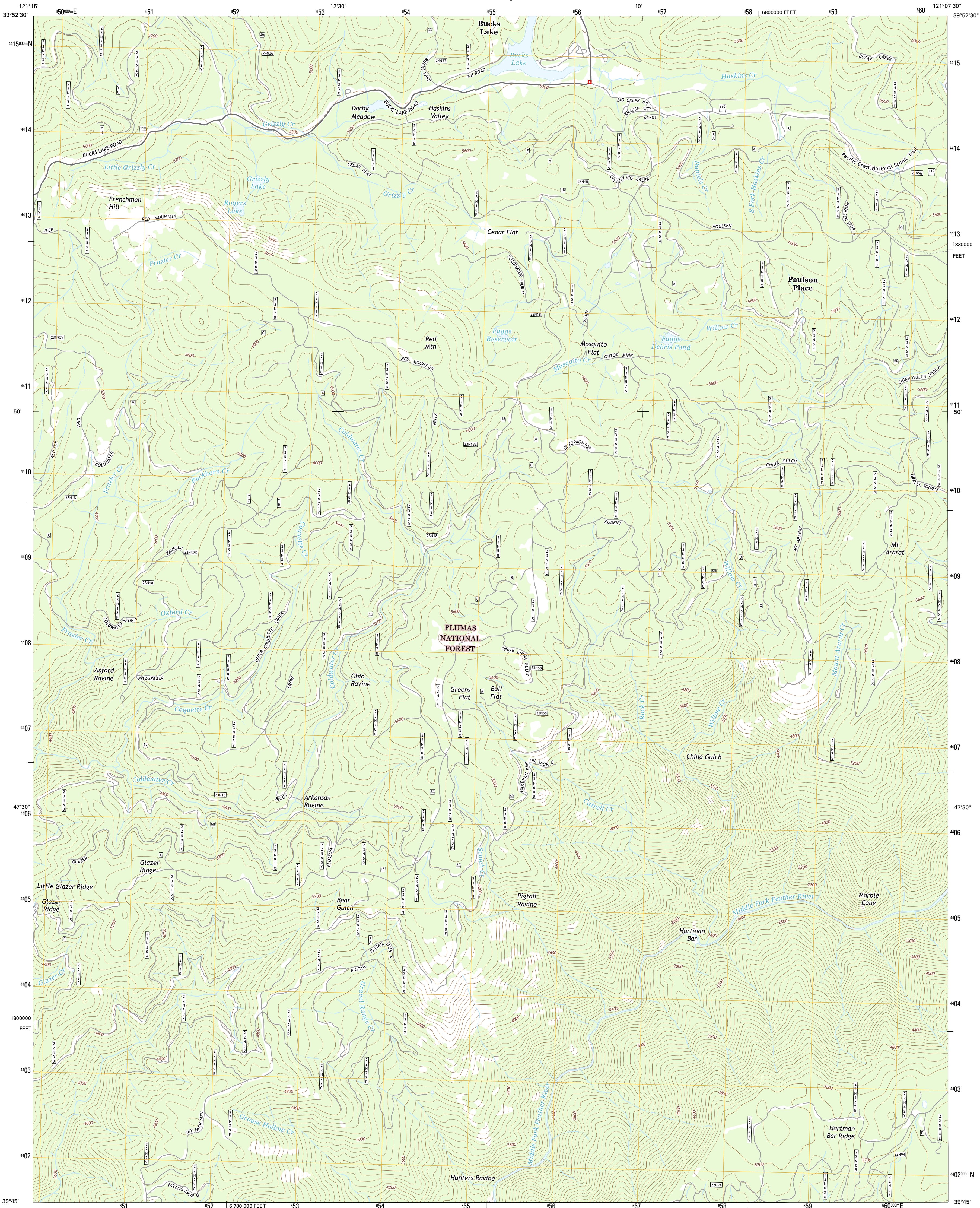




U.S. DEPARTMENT OF THE INTERIOR
U.S. GEOLOGICAL SURVEY



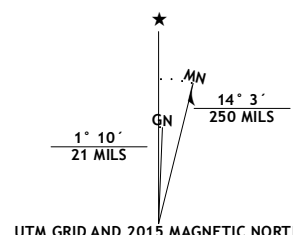
HASKINS VALLEY QUADRANGLE
CALIFORNIA-PLUMAS CO.
7.5-MINUTE SERIES



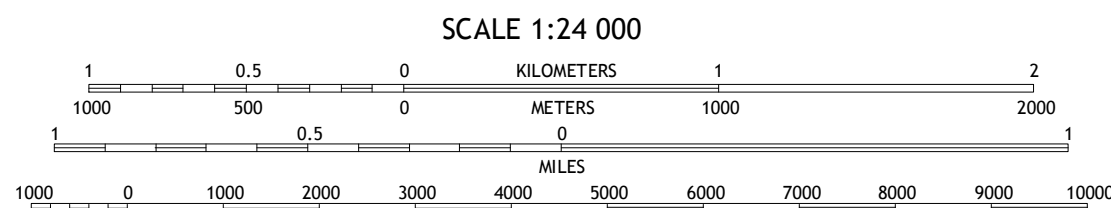
Produced by the United States Geological Survey
North American Datum of 1983 (NAD83)
World Geodetic System of 1984 (WGS84) Projection and
1 000-meter grid: Universal Transverse Mercator, Zone 10S
10 000-foot ticks: California Coordinate System of 1983 (zone 1)

This map is not a legal document. Boundaries may be
generalized for this map scale. Private lands within government
reservations may not be shown. Obtain permission before
entering private lands.

Imagery.....NAIP, June 2012
Roads.....HERE, ©2013 - 2014
Roads within US Forest Service Lands.....FS Topo Data
with limited Forest Service updates, 2012 - 2015
Names.....National Hydrography Dataset, 2015
Hydrography.....National Elevation Dataset, 1999
Contours.....National Elevation Dataset, 1999
Boundaries.....Multiple sources; see metadata file 1972 - 2015
Public Land Survey System.....BLM, 2011



U.S. National Grid
100,000-m Square ID
FK
Grid Zone Designation
10S



CONTOUR INTERVAL 80 FEET
NORTH AMERICAN VERTICAL DATUM OF 1988

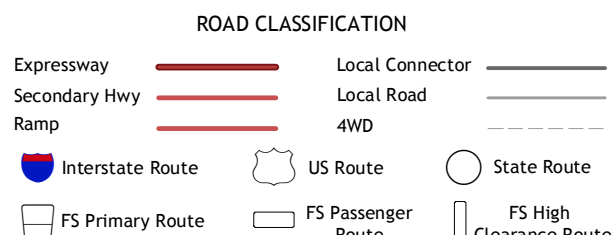
This map was produced to conform with the
National Geospatial Program US Topo Product Standard, 2011.
A metadata file associated with this product is draft version 0.6.18



1	2	3
4	5	6
7	8	9

ADJOINING QUADRANGLES

- 1 Storrie
- 2 Bucks Lake
- 3 Meadow Valley
- 4 Soapstone Hill
- 5 Dogwood Peak
- 6 Brush Creek
- 7 Cascade
- 8 American House



Check with local Forest Service unit
for current travel conditions and restrictions.

HASKINS VALLEY, CA
2015

