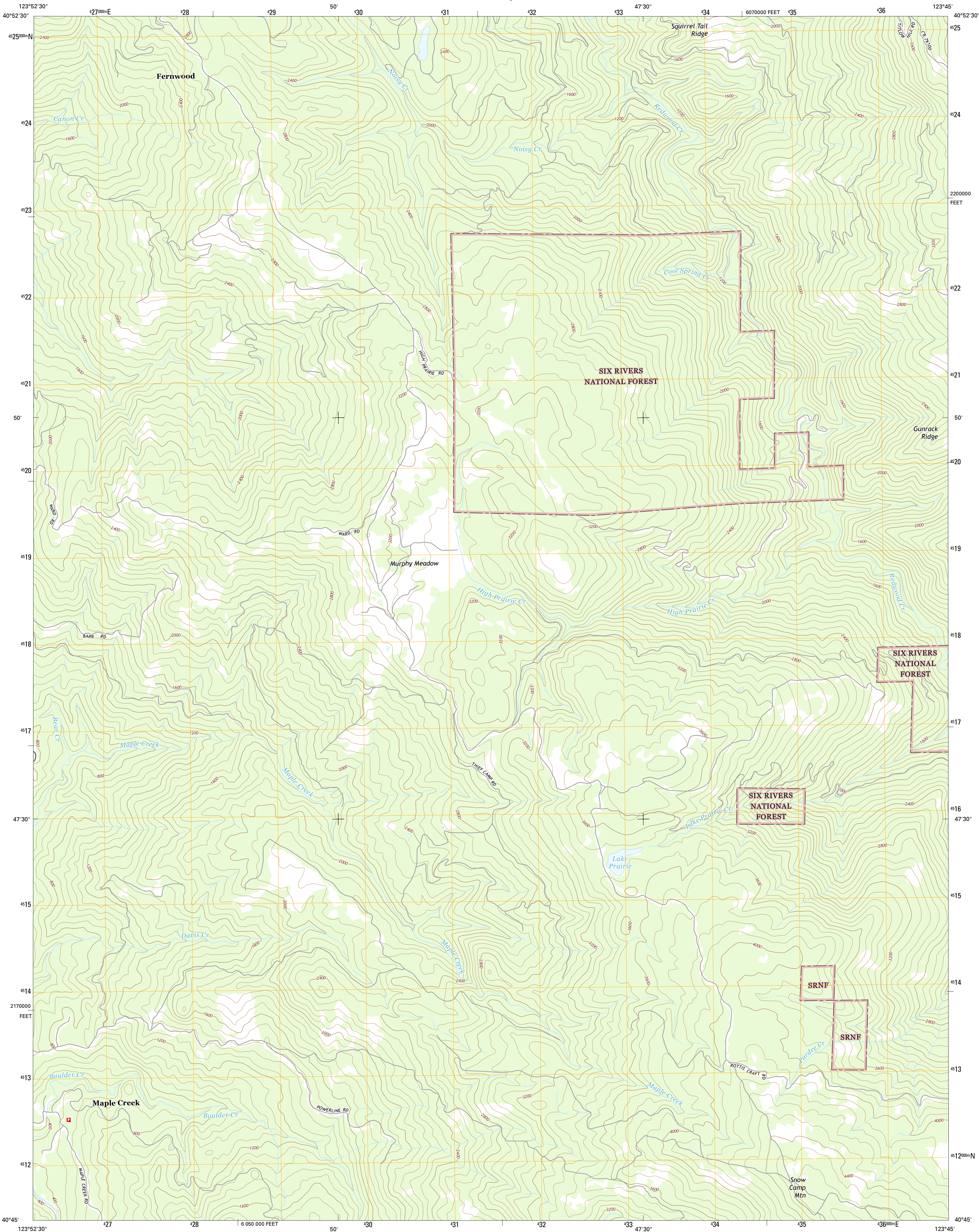




U.S. DEPARTMENT OF THE INTERIOR
U.S. GEOLOGICAL SURVEY



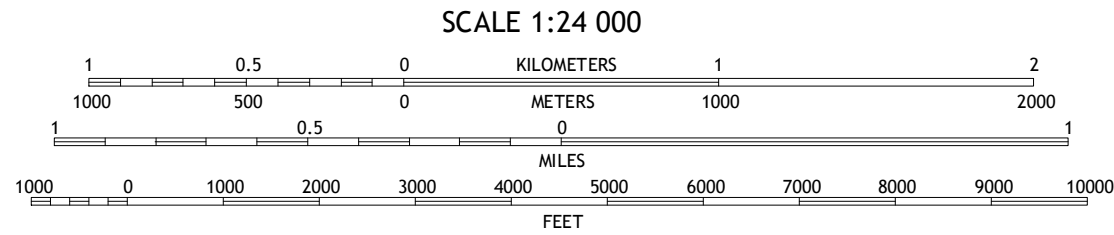
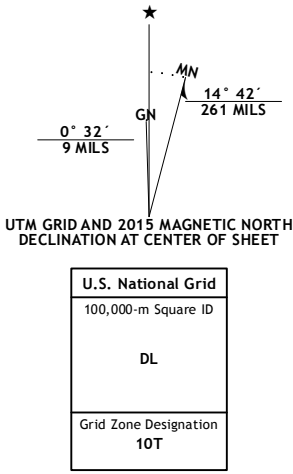
MAPLE CREEK QUADRANGLE
CALIFORNIA-HUMBOLDT CO.
7.5-MINUTE SERIES



Produced by the United States Geological Survey
North American Datum of 1983 (NAD83)
World Geodetic System of 1984 (WGS84)
1 000-meter grid: Universal Transverse Mercator, Zone 10T
10 000-foot ticks: California Coordinate System of 1983 (zone 1)

This map is not a legal document. Boundaries may be generalized for this map scale. Private lands within government reservations may not be shown. Obtain permission before entering private lands.

Imagery.....NAIP, June 2012
Roads.....HERE, ©2013 - 2014
Roads within US Forest Service Lands.....FSTopo Data with limited Forest Service updates, 2012, 2015
Names.....GNIS, 2015
Hydrography.....National Hydrography Dataset, 2012
Contours.....National Elevation Dataset, 1999
Boundaries.....Multiple sources; see metadata file 1972 - 2015
Public Land Survey System.....BLM, 2011



CONTOUR INTERVAL 80 FEET
NORTH AMERICAN VERTICAL DATUM OF 1988

This map was produced to conform with the National Geospatial Program US Topo Product Standard, 2011. A metadata file associated with this product is draft version 0.6.18.



| ROAD CLASSIFICATION | | | |
|---------------------|------------------|--------------------|-------------------------|
| Expressway | Local Connector | Local Road | 4WD |
| Ramp | US Route | State Route | FS High Clearance Route |
| Interstate Route | FS Primary Route | FS Passenger Route | |

Check with local Forest Service unit for current travel conditions and restrictions.

| | | |
|---|---|---|
| 1 | 2 | 3 |
| 4 | 5 | 6 |
| 7 | 8 | |

ADJOINING QUADRANGLES

1 Blue Lake
2 Lord-Ellis Summit
3 Willow Creek
4 Korbet
5 Grouse Mountain
6 Jaqua Buttes
7 Mad River Buttes
8 Board Camp Mountain

MAPLE CREEK, CA
2015

