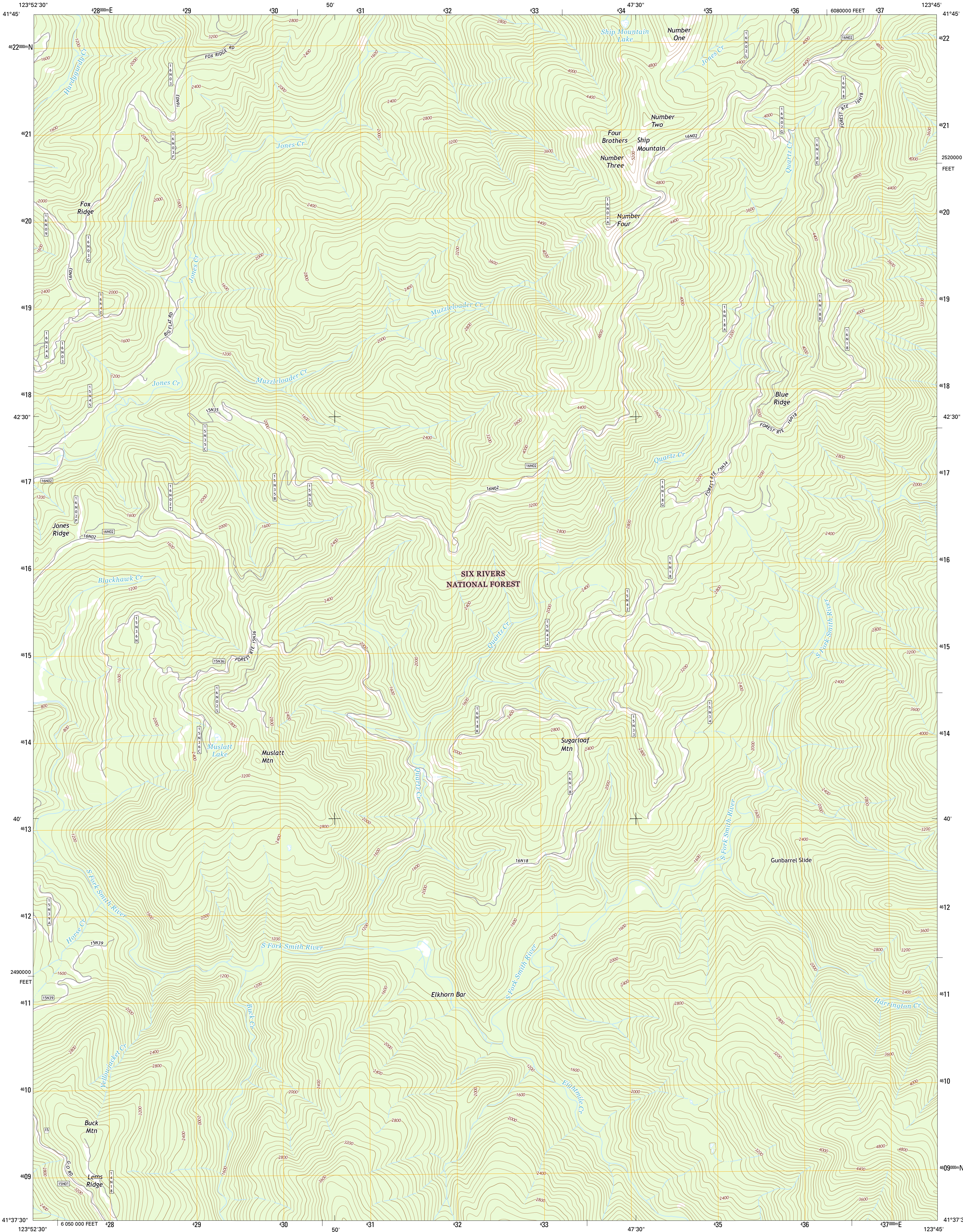




U.S. DEPARTMENT OF THE INTERIOR  
U.S. GEOLOGICAL SURVEY



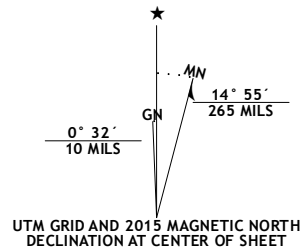
SHIP MOUNTAIN QUADRANGLE  
CALIFORNIA-DEL NORTE CO.  
7.5-MINUTE SERIES



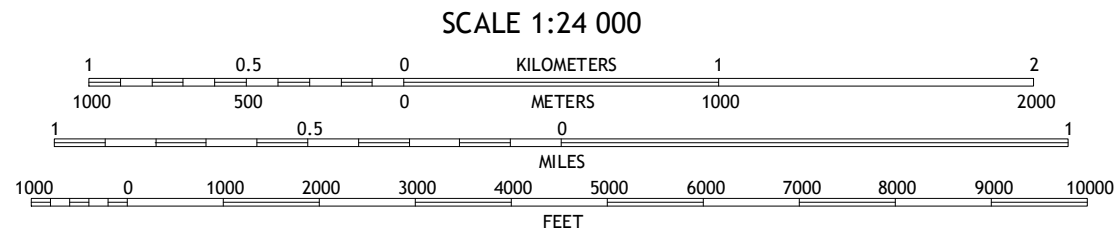
Produced by the United States Geological Survey  
North American Datum of 1983 (NAD83)  
World Geodetic System of 1984 (WGS84) Projection and  
1 000-meter grid: Universal Transverse Mercator, Zone 10T  
10 000-foot ticks: California Coordinate System of 1983 (zone 1)

This map is not a legal document. Boundaries may be  
generalized for this map scale. Private lands within government  
reservations may not be shown. Obtain permission before  
entering private lands.

Imagery.....NAIP, May 2012  
Roads.....HERE, ©2013 - 2014  
Roads within US Forest Service Lands.....FS Topo Data  
with limited Forest Service updates, 2012, 2015  
Names.....National Hydrography Dataset, 2012  
Contours.....National Elevation Dataset, 1999  
Boundaries.....Multiple sources; see metadata file 1972 - 2015  
Public Land Survey System.....BLM, 2011



U.S. National Grid  
100,000-m Square ID  
DM  
Grid Zone Designation  
10T



CONTOUR INTERVAL 80 FEET  
NORTH AMERICAN VERTICAL DATUM OF 1988

This map was produced to conform with the  
National Geospatial Program US Topo Product Standard, 2011.  
A metadata file associated with this product is draft version 0.6.18



QUADRANGLE LOCATION

1	2	3
4	5	6
7	8	9

1 Gasquet  
2 Hurdysbury Butte  
3 Devils Punchbowl  
4 Cantook Mountain  
5 Prescott Mountain  
6 Klamath Glen  
7 Summit Valley  
8 Chimney Rock

ROAD CLASSIFICATION  
Expressway  
Secondary Hwy  
Ramp  
Interstate Route  
FS Primary Route  
Local Connector  
Local Road  
4WD  
US Route  
FS Passenger Route  
State Route  
FS High Clearance Route

Check with local Forest Service unit  
for current travel conditions and restrictions.

SHIP MOUNTAIN, CA  
2015



NSN 7540-01-602-6666  
USGS X24K4115