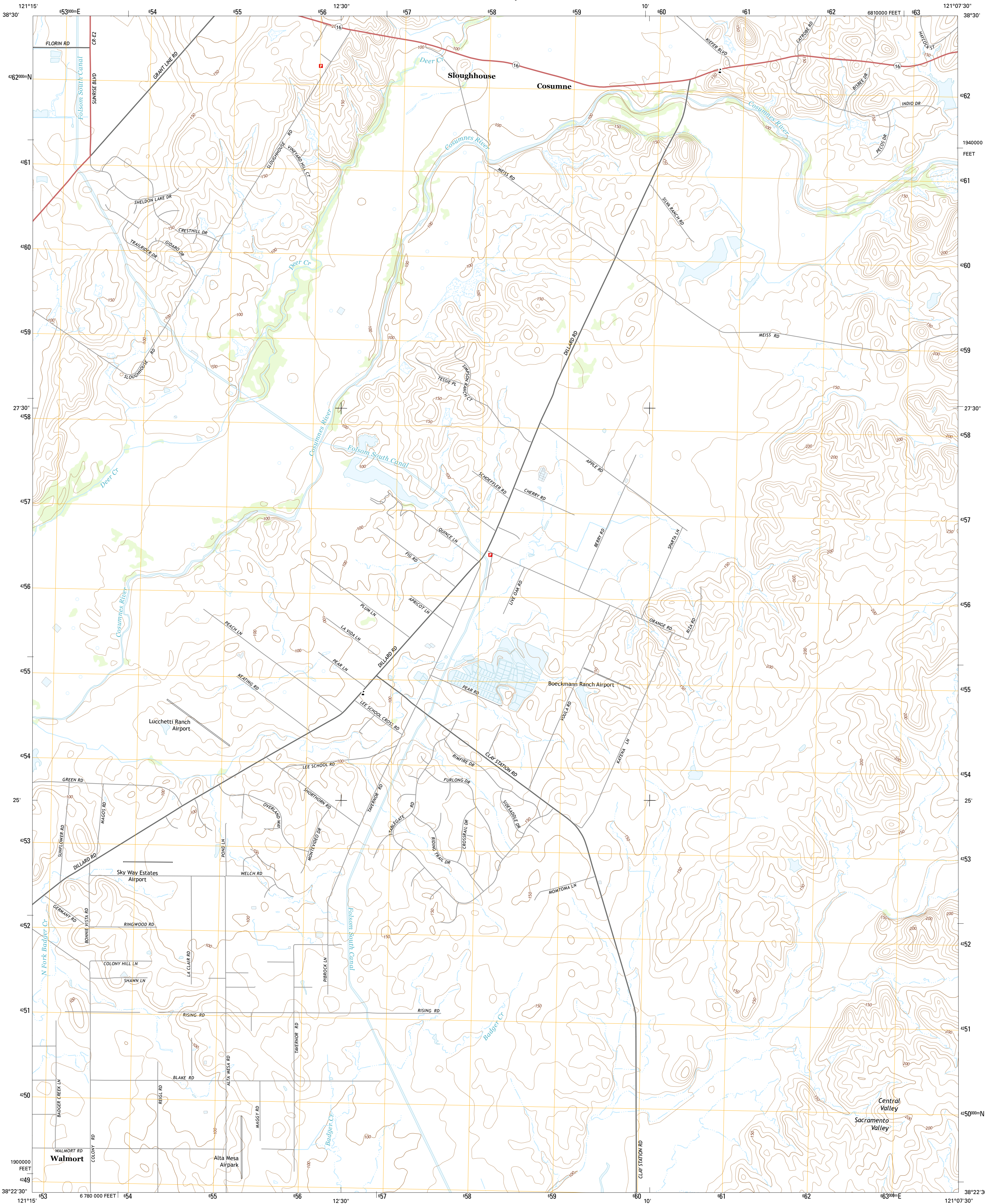




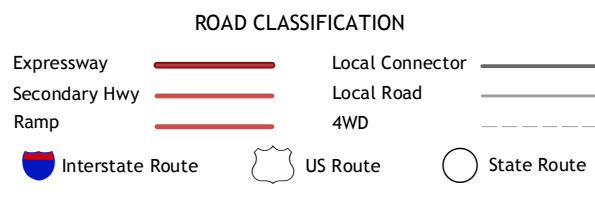
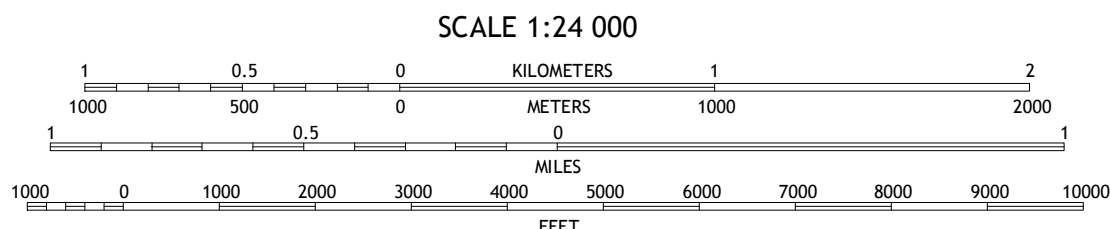
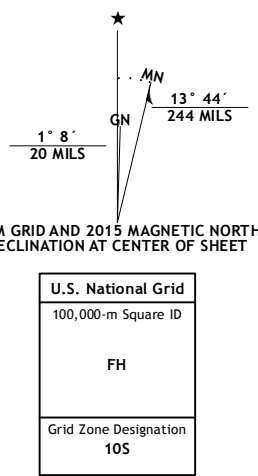
U.S. DEPARTMENT OF THE INTERIOR
U.S. GEOLOGICAL SURVEY



SLOUGHHOUSE QUADRANGLE
CALIFORNIA-SACRAMENTO CO.
7.5-MINUTE SERIES



Produced by the United States Geological Survey
North American Datum of 1983 (NAD83)
World Geodetic System of 1984 (WGS84). Projection and
1 000-meter grid; Universal Transverse Mercator, Zone 10S
10 000-foot ticks; California Coordinate System of 1983 (zone 2)
This map is not a legal document. Boundaries may be
generalized for this map scale. Private lands within government
reservations may not be shown. Obtain permission before
entering private lands.
Imagery.....NAIP, June 2012
Roads.....HERE, ©2013 - 2014
Names.....GNIS, 2015
Hydrography.....National Hydrography Dataset, 2012
Contours.....National Elevation Dataset, 2000
Boundaries.....Multiple sources; see metadata file 1972 - 2015
Public Land Survey System.....BLM, 2011



1	2	3
4	5	6
7	8	9

ADJOINING QUADRANGLES

1 Carmichael
2 Buffalo Creek
3 Folsom SE
4 Elk Grove
5 Carlsbad
6 Galt
7 Clay
8 Goose Creek

SLOUGHHOUSE, CA
2015

