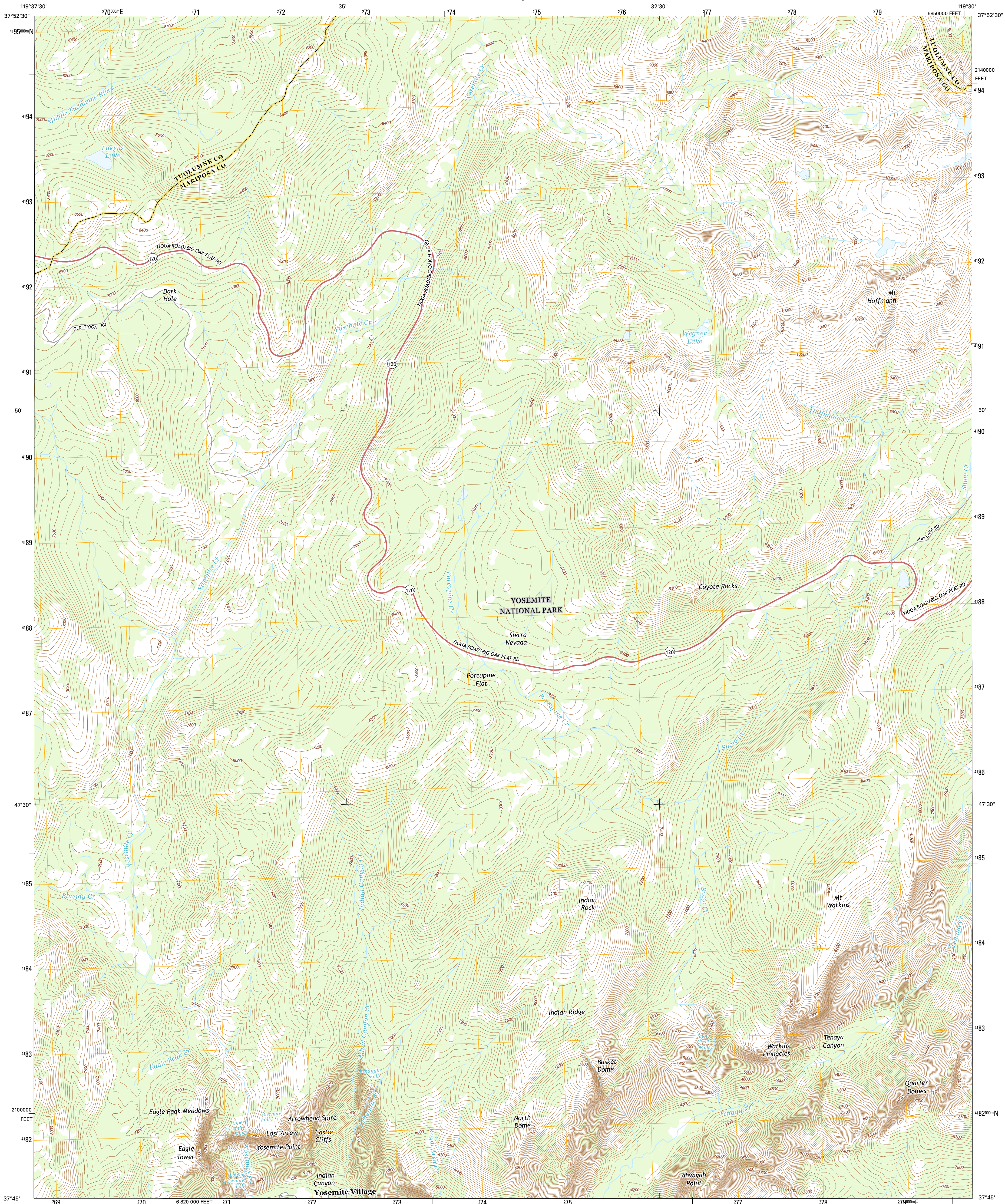




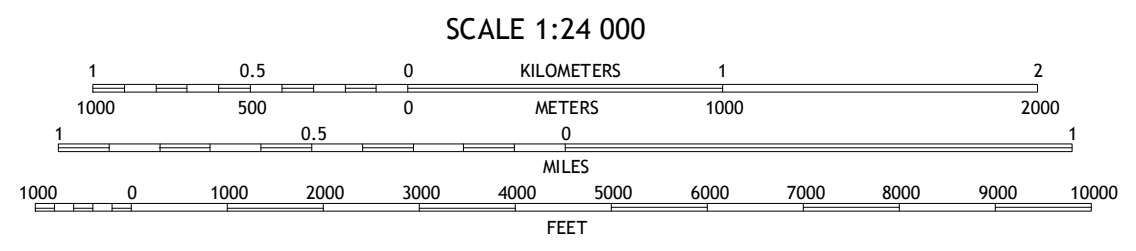
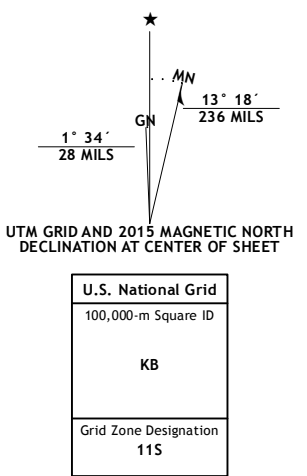
U.S. DEPARTMENT OF THE INTERIOR  
U.S. GEOLOGICAL SURVEY



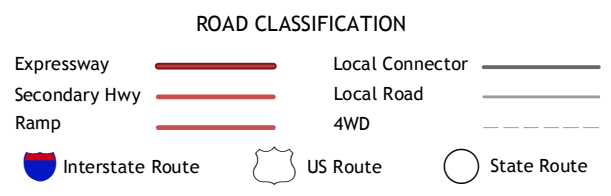
YOSEMITE FALLS QUADRANGLE  
CALIFORNIA  
7.5-MINUTE SERIES



**Produced by the United States Geological Survey**  
North American Datum of 1983 (NAD83)  
World Geodetic System of 1984 (WGS84) Projection and  
1 000-meter grid: Universal Transverse Mercator, Zone 11S  
10 000-foot ticks: California Coordinate System of 1983 (zone 3)  
  
This map is not a legal document. Boundaries may be  
generalized for this map scale. Private lands within government  
reservations may not be shown. Obtain permission before  
entering private lands.  
  
Imagery:.....NAIP, June 2012  
Roads:.....HERE, ©2013 - 2014  
Names:.....GNIS, 2015  
Hydrography:.....National Hydrography Dataset, 2012  
Contours:.....National Elevation Dataset, 2001  
Boundaries:.....Multiple sources; see metadata file 1972 - 2015  
Public Land Survey System:.....BLM, 2011



CONTOUR INTERVAL 40 FEET  
NORTH AMERICAN VERTICAL DATUM OF 1988  
  
This map was produced to conform with the  
National Geospatial Program US Topo Product Standard, 2011.  
A metadata file associated with this product is draft version 0.6.18



1	2	3
4	5	6
7	8	

ADJOINING QUADRANGLES

1 Hetch Hetchy Reservoir  
2 Ten Lakes  
3 Falls Ridge  
4 Tamarack Flat  
5 Tenaya Lake  
6 El Capitan  
7 Half Dome  
8 Merced Peak

YOSEMITE FALLS, CA  
2015

