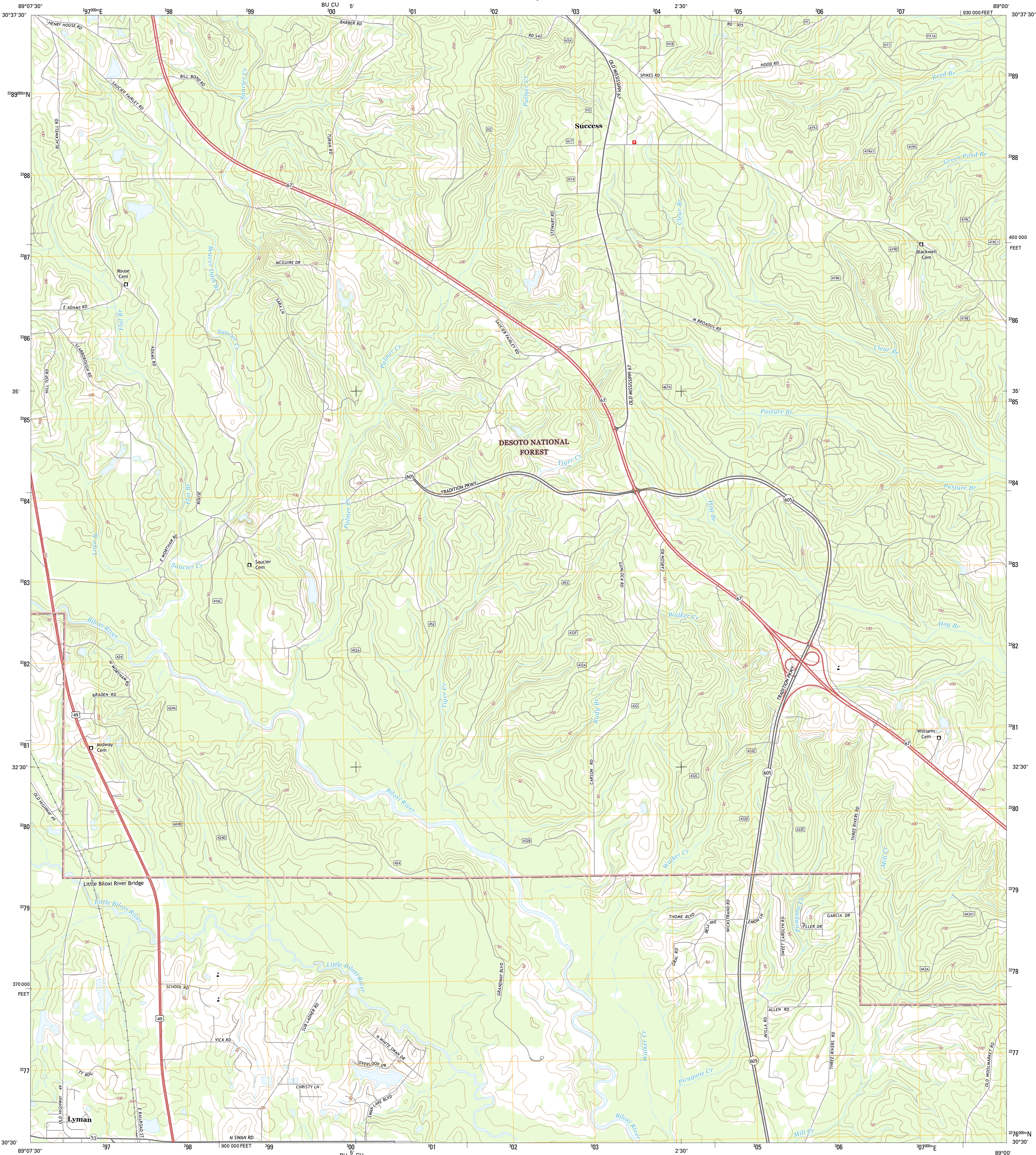




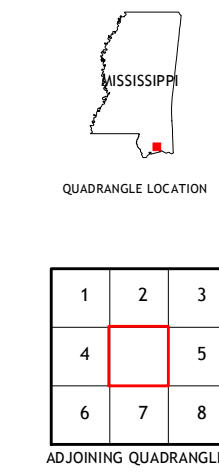
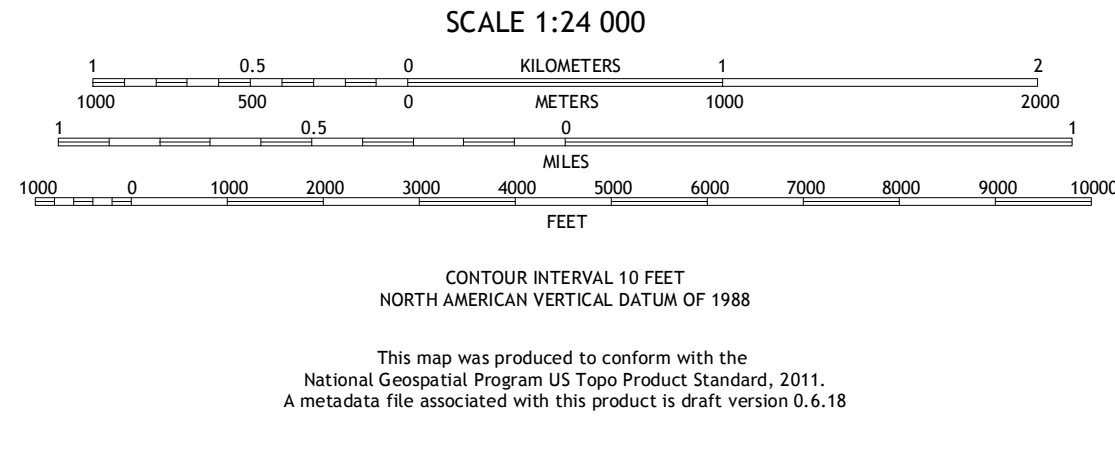
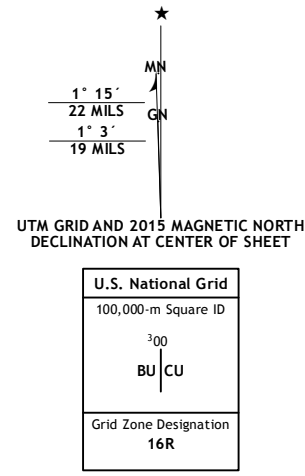
U.S. DEPARTMENT OF THE INTERIOR  
U.S. GEOLOGICAL SURVEY



SUCCESS QUADRANGLE  
MISSISSIPPI-HARRISON CO.  
7.5-MINUTE SERIES



Produced by the United States Geological Survey  
North American Datum of 1983 (NAD83)  
World Geodetic System of 1984 (WGS84) Projection and  
1 000-meter grid: Universal Transverse Mercator, Zone 16R  
10 000-foot ticks: Mississippi Coordinate System of 1983 (east  
zone)  
This map is not a legal document. Boundaries may be  
generalized for this map scale. Private lands within government  
reservations may not be shown. Obtain permission before  
entering private lands.  
Imagery.....NAIP, October 2014  
Roads.....HERE, ©2013 - 2014  
Roads within US Forest Service Lands.....FS Topo Data  
with limited Forest Service updates, 2012 - 2015  
Names.....GNIS, 2015  
Hydrography.....National Hydrography Dataset, 2014  
Contours.....National Elevation Dataset, 2000  
Boundaries.....Multiple sources; see metadata file 1972 - 2015  
Public Land Survey System.....BLM, 2015



| ROAD CLASSIFICATION |                    |                         |  |
|---------------------|--------------------|-------------------------|--|
| Expressway          | Local Connector    |                         |  |
| Secondary Hwy       | Local Road         |                         |  |
| Ramp                | 4WD                |                         |  |
| Interstate Route    | US Route           | State Route             |  |
| FS Primary Route    | FS Passenger Route | FS High Clearance Route |  |

|   |   |   |
|---|---|---|
| 1 | 2 | 3 |
| 4 | 5 | 6 |
| 7 | 8 | 9 |

1 McHenry  
2 Airey  
3 Bearice  
4 Wortham  
5 White Plains  
6 Gulfport NW  
7 Gulfport North  
8 Biloxi

Check with local Forest Service unit  
for current travel conditions and restrictions.

SUCCESS, MS  
2015

