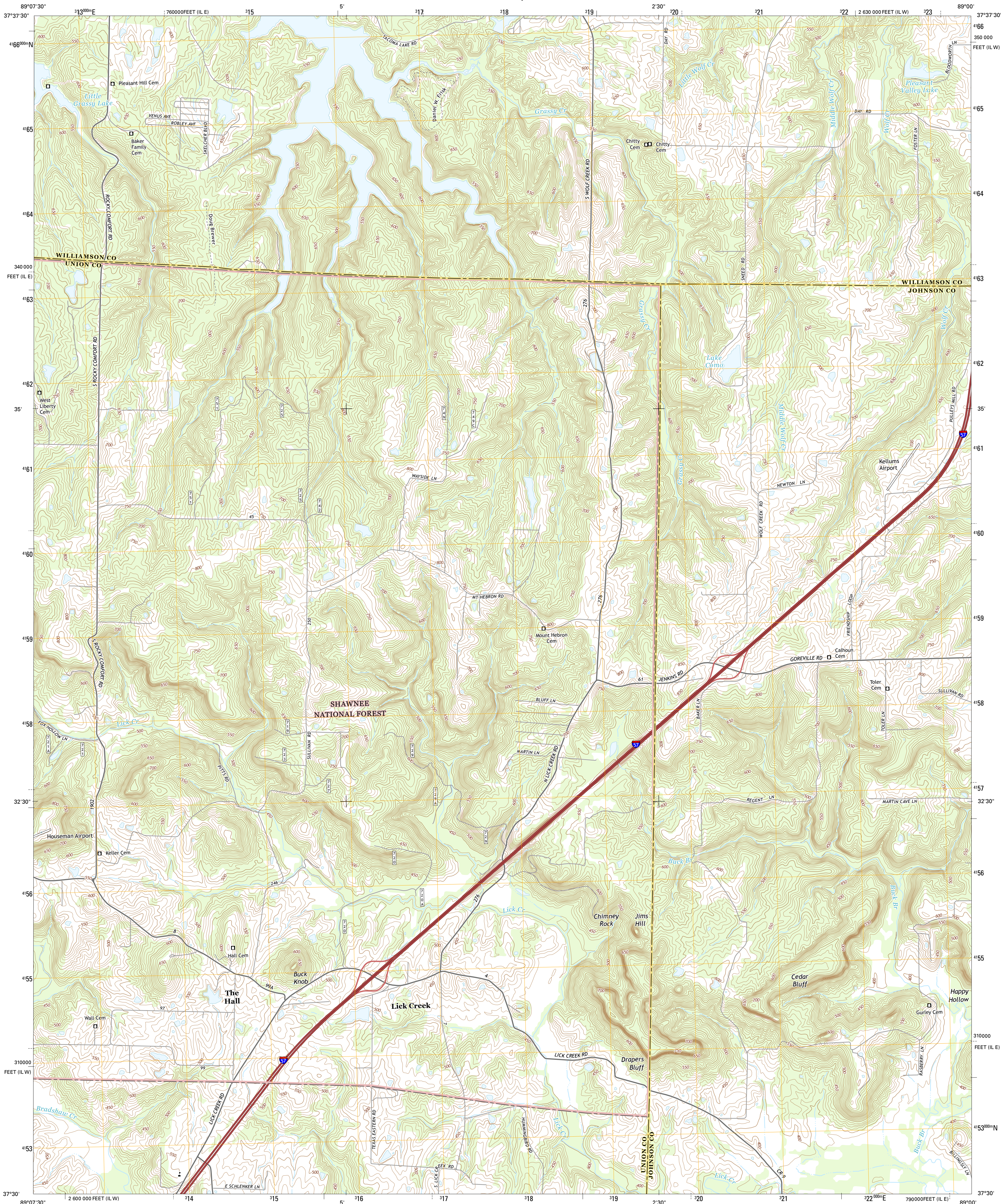




U.S. DEPARTMENT OF THE INTERIOR  
U.S. GEOLOGICAL SURVEY



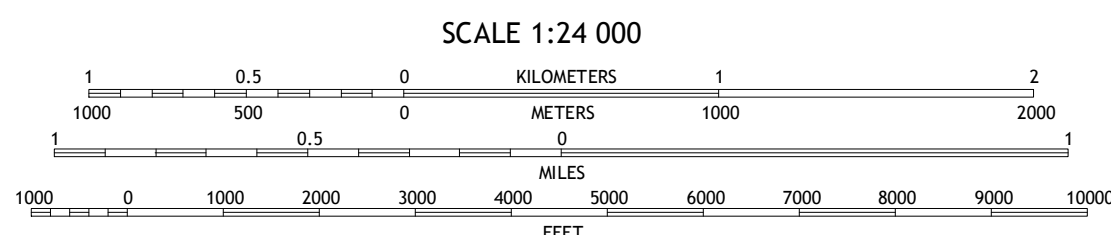
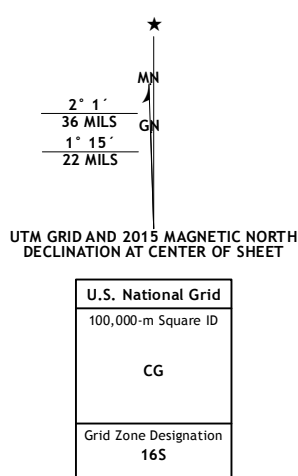
LICK CREEK QUADRANGLE  
ILLINOIS  
7.5-MINUTE SERIES



Produced by the United States Geological Survey  
North American Datum of 1983 (NAD83)  
World Geodetic System of 1984 (WGS84). Projection and  
1 000-meter grid: Universal Transverse Mercator, Zone 16S  
10 000-foot ticks: Illinois Coordinate System of 1983 (west and  
east zones)

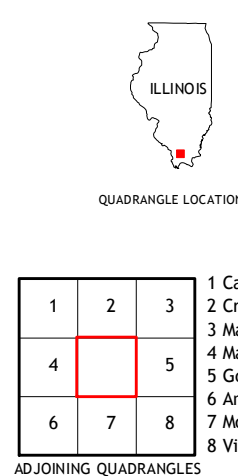
This map is not a legal document. Boundaries may be  
generalized for this map scale. Private lands within government  
reservations may not be shown. Obtain permission before  
entering private lands.

Imagery.....NAIP, July 2014  
Roads.....HERE, ©2013 - 2014  
Roads within US Forest Service Lands.....FS Topo Data  
with limited Forest Service updates, 2012 - 2015  
Names.....GNIS, 2015  
Hydrography.....National Hydrography Dataset, 2014  
Contours.....National Elevation Dataset, 2009  
Boundaries.....Multiple sources; see metadata file 1972 - 2015



CONTOUR INTERVAL 10 FEET  
NORTH AMERICAN VERTICAL DATUM OF 1988

This map was produced to conform with the  
National Geospatial Program US Topo Product Standard, 2011.  
A metadata file associated with this product is draft version 0.6.18



ROAD CLASSIFICATION

Expressway  
Secondary Hwy  
Ramp  
Interstate Route  
FS Primary Route  
Local Connector  
Local Road  
4WD  
US Route  
FS Passenger Route  
State Route  
FS High  
Clearance Route

Check with local Forest Service unit  
for current travel conditions and restrictions.

1	2	3
4	5	6
7	8	9

ADJOINING QUADRANGLES

1 Carbondale  
2 Crab Orchard Lake  
3 Marion  
4 Makanda  
5 Goreville  
6 Anna  
7 Mount Pleasant  
8 Vienna

LICK CREEK, IL  
2015

