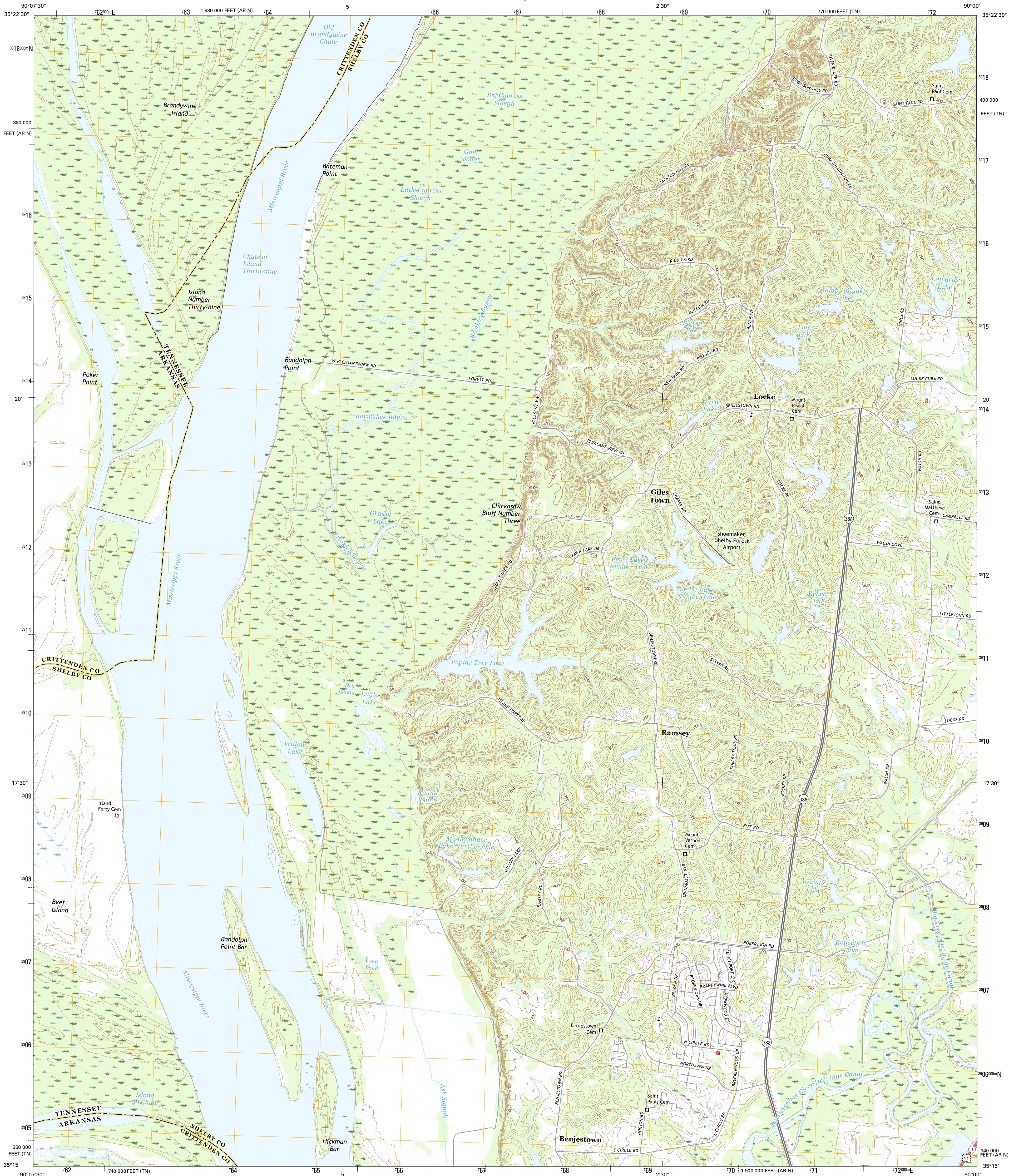




U.S. DEPARTMENT OF THE INTERIOR
U.S. GEOLOGICAL SURVEY



LOCKE QUADRANGLE
TENNESSEE-ARKANSAS
7.5-MINUTE SERIES



Produced by the United States Geological Survey
North American Datum of 1983 (NAD83)
Roads:..... U.S. Census Bureau, 2014 - 2015
Names:..... GNIS, 2015
Hydrography:..... National Hydrography Dataset, 2013
Contours:..... National Elevation Dataset, 2012
Boundaries:..... Multiple sources; see metadata file 1972 - 2015
Public Land Survey System:..... BLM, 2011
Wetlands:..... FWS National Wetlands Inventory 1977 - 2014

This map is not a legal document. Boundaries may be generalized for this map scale. Private lands within government reservations may not be shown. Obtain permission before entering private lands.

Image:..... NADP, July 2013
Roads:..... U.S. Census Bureau, 2014 - 2015
Names:..... GNIS, 2015
Hydrography:..... National Hydrography Dataset, 2013
Contours:..... National Elevation Dataset, 2012
Boundaries:..... Multiple sources; see metadata file 1972 - 2015
Public Land Survey System:..... BLM, 2011
Wetlands:..... FWS National Wetlands Inventory 1977 - 2014

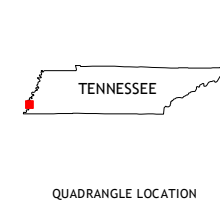
UTM GRID AND 2016 MAGNETIC NORTH DECLINATION AT CENTER OF SHEET
1" = 8' 20" MILES
1" = 1' 42" 30 MILES

U.S. National Grid
100,000-m Square ID
YV
Grid Zone Designation
155

SCALE 1:24 000
1 0.5 0 1 2
1000 500 0 1000 2000
KILOMETERS
1 0.5 0 1 2
1000 500 0 1000 2000
METERS
1 0 1000 2000 3000 4000 5000 6000 7000 8000 9000 10000
MILES
FEET

CONTOUR INTERVAL 10 FEET
NORTH AMERICAN VERTICAL DATUM OF 1988

This map was produced to conform with the
National Geospatial Program US Topo Product Standard, 2011.
A metadata file associated with this product is draft version 0.6.19



QUADRANGLE LOCATION

1	2	3
4	5	6
7	8	9

1 Frenchmans Bayou
2 Pecan Point
3 Drummonds
4 Jericho
5 Millington
6 West Memphis
7 Northwest Memphis
8 Northeast Memphis

ROAD CLASSIFICATION
Expressway Local Connector
Secondary Hwy Local Road
Ramp 4WD
Interstate Route US Route State Route

LOCKE, TN-AR
2016



NSN 764-010-603-4426
NGA REF NO. USGS X 24 K 26 178