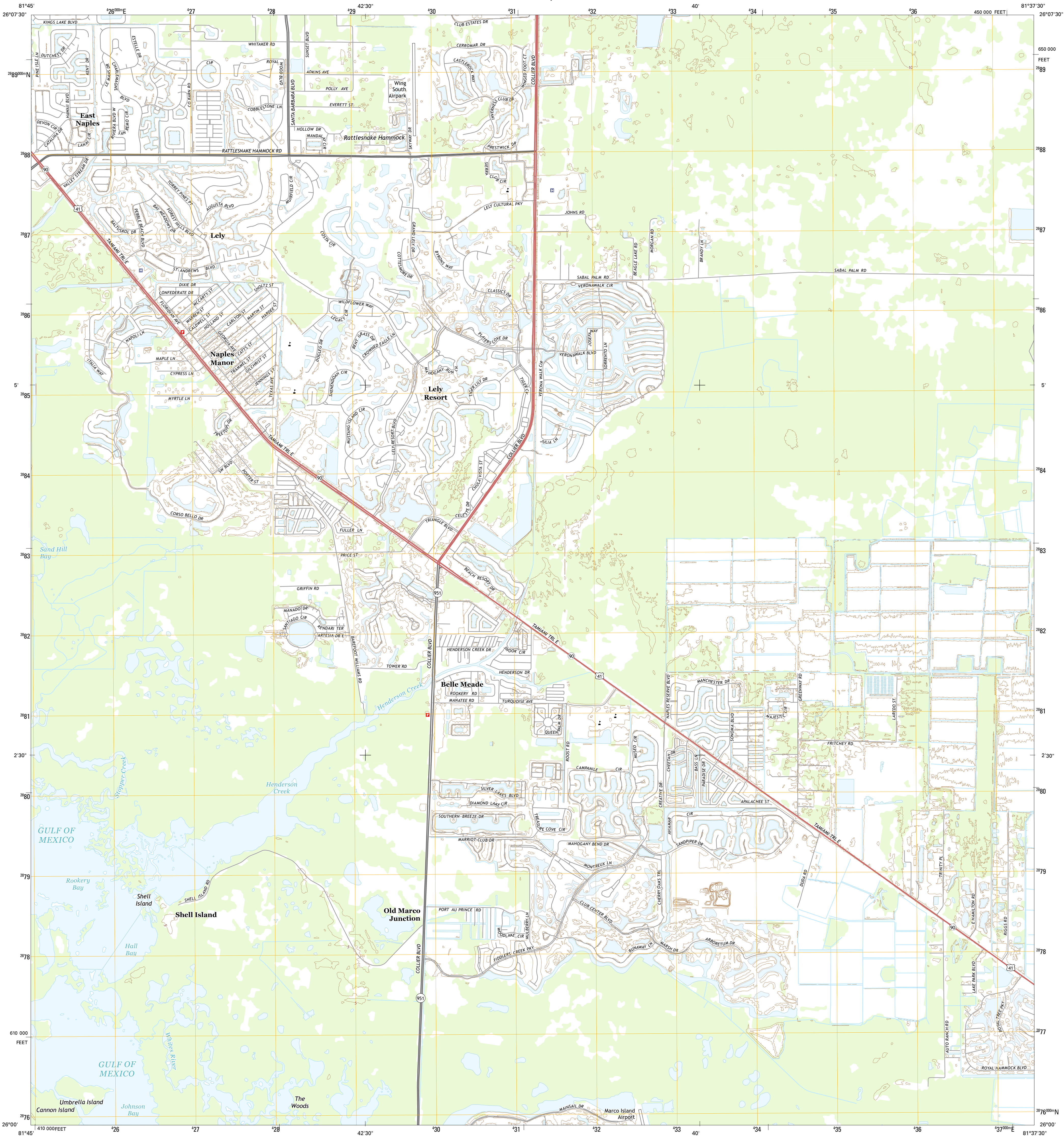




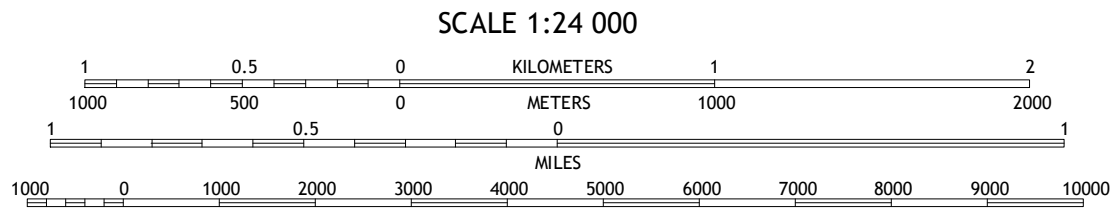
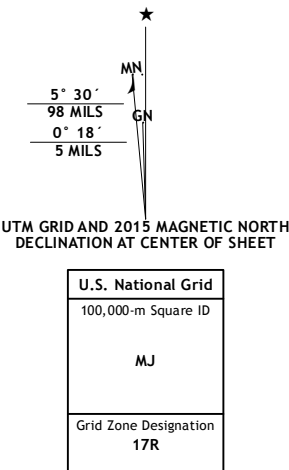
U.S. DEPARTMENT OF THE INTERIOR
U.S. GEOLOGICAL SURVEY



BELLE MEADE QUADRANGLE
FLORIDA-COLLIER CO.
7.5-MINUTE SERIES



Produced by the United States Geological Survey
North American Datum of 1983 (NAD83)
World Geodetic System of 1984 (WGS84), Projection and
1 000-meter grid: Universal Transverse Mercator, Zone 17R
10 000-foot ticks: Florida Coordinate System of 1983 (east zone)
This map is not a legal document. Boundaries may be
generalized for this map scale. Private lands within government
reservations may not be shown. Obtain permission before
entering private lands.



CONTOURS NOT PRESENT BECAUSE AVAILABLE ELEVATION
DATA DO NOT MEET ACCURACY REQUIREMENTS
This map was produced to conform with the
National Geospatial Program US Topo Product Standard, 2011.
A metadata file associated with this product is draft version 0.6.18



1	2	3	1 Naples North
4	5	3 Belle Meade NE	
6	7	8	2 Belle Meade NW
			4 Naples South
			5 Belle Meade SE
			6 Marco Island OE W
			7 Marco Island
			8 Royal Palm Hammock

BELLE MEADE, FL
2015

