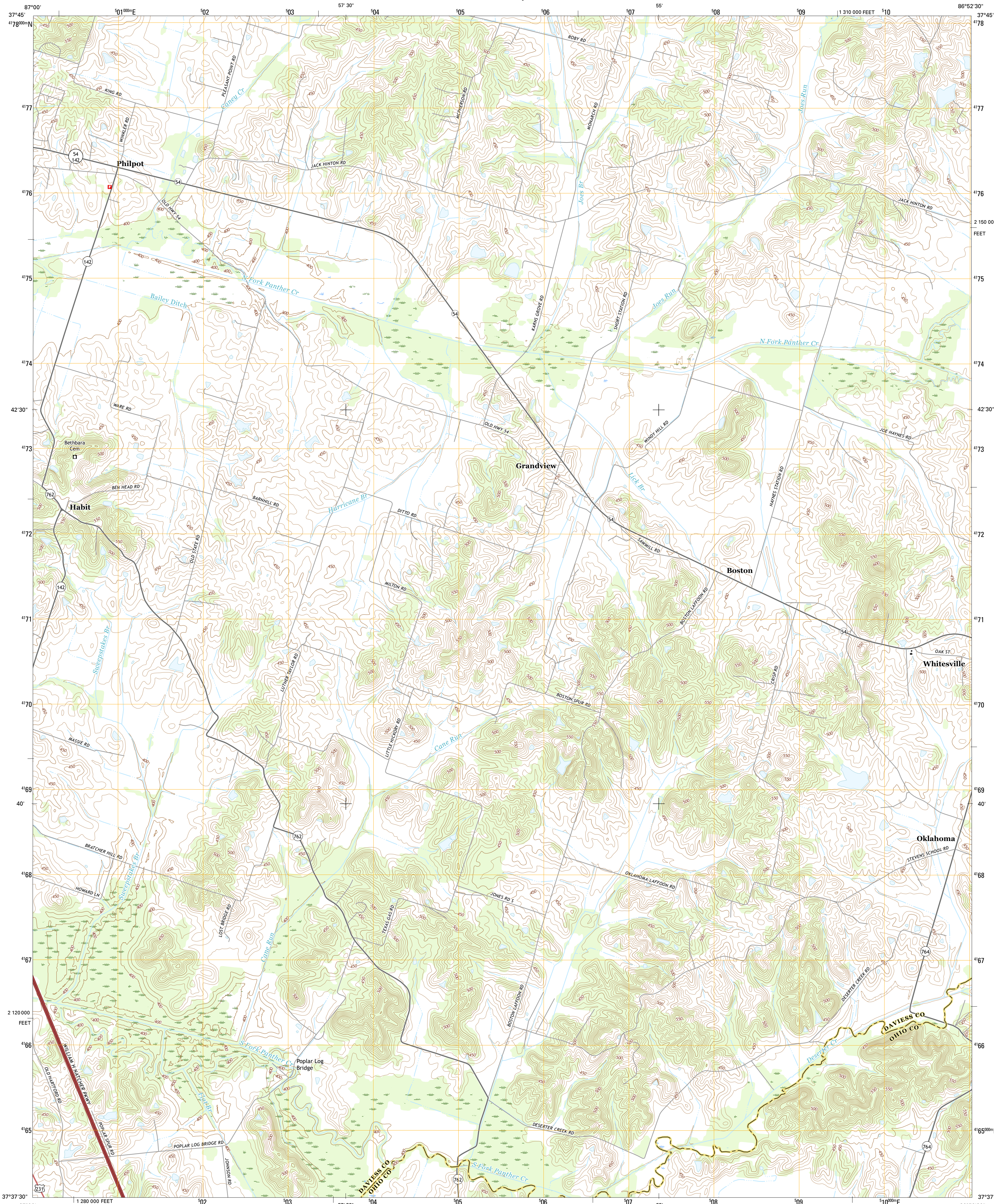




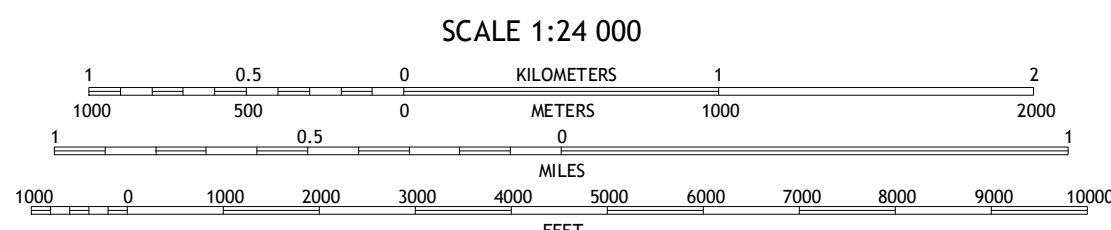
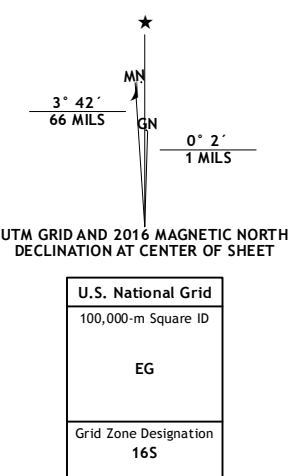
U.S. DEPARTMENT OF THE INTERIOR
U.S. GEOLOGICAL SURVEY



PHILPOT QUADRANGLE
KENTUCKY
7.5-MINUTE SERIES



Produced by the United States Geological Survey
North American Datum of 1983 (NAD83)
World Geodetic System of 1984 (WGS84), Projection and
1 000-meter grid: Universal Transverse Mercator, Zone 16S
10 000-foot ticks: Kentucky Coordinate System of 1983 (south
zone)
This map is not a legal document. Boundaries may be
generalized for this map scale. Private lands within government
reservations may not be shown. Obtain permission before
entering private lands.
Imagery.....NAIP, July 2014
Roads.....U.S. Census Bureau, 2015 - 2016
Names.....GNIS, 2016
Hydrography.....National Hydrography Dataset, 2014
Contours.....National Elevation Dataset, 2002
Boundaries.....Multiple sources; see metadata file 1972 - 2016
Wetlands.....FWS National Wetlands Inventory 1977 - 2014



| | | | |
|---|---|------------------|------------------|
| 1 | 2 | 3 | 1 Owensboro East |
| 4 | 5 | 2 Maceo | |
| 6 | 7 | 3 Pettitville | |
| | | 4 Sutherland | |
| | | 5 Whitesville | |
| | | 6 Ulica | |
| | | 7 Pleasant Ridge | |
| | | 8 Dundee | |

PHILPOT, KY
2016

