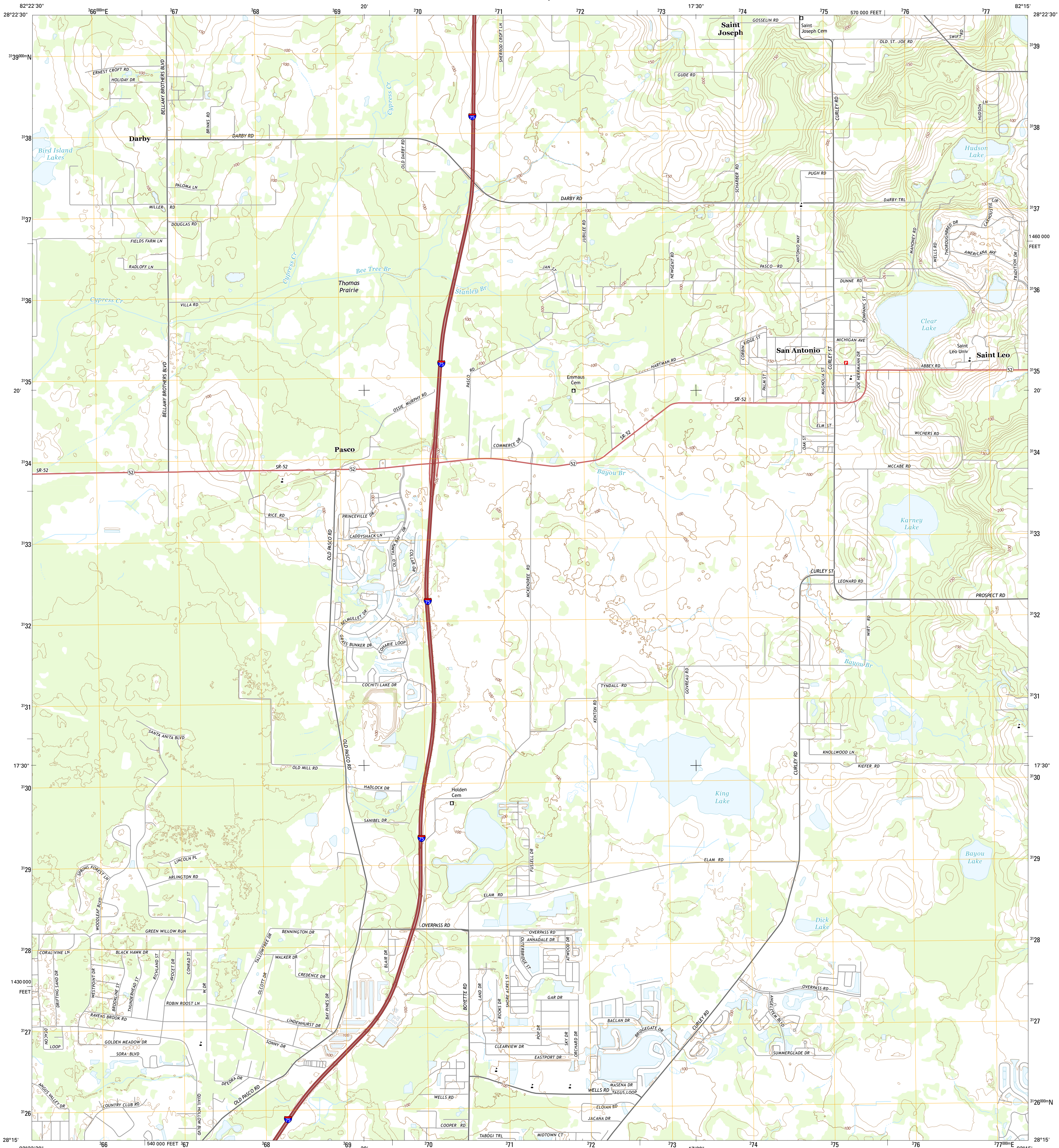




U.S. DEPARTMENT OF THE INTERIOR
U.S. GEOLOGICAL SURVEY



SAN ANTONIO QUADRANGLE
FLORIDA-PASCO CO.
7.5-MINUTE SERIES



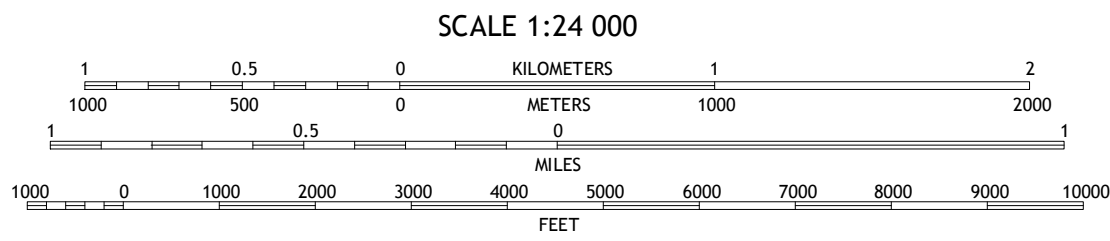
Produced by the United States Geological Survey
North American Datum of 1983 (NAD83)
World Geodetic System of 1984 (WGS84), Projection and
1 000-meter grid: Universal Transverse Mercator, Zone 17R
10 000-foot ticks: Florida Coordinate System of 1983 (west zone)

This map is not a legal document. Boundaries may be
generalized for this map scale. Private lands within government
reservations may not be shown. Obtain permission before
entering private lands.

Imagery.....NAIP, August 2013
Roads.....HERE, ©2013 - 2014
Names.....GNS, 2015
Hydrography.....National Hydrography Dataset, 2013
Contours.....National Elevation Dataset, 2012
Boundaries.....Multiple sources; see metadata file 1972 - 2015
Public Land Survey System.....BLM, 2015

UTM GRID AND 2015 MAGNETIC NORTH
DECLINATION AT CENTER OF SHEET

U.S. National Grid 100,000-m Square ID
LM
Grid Zone Designation 17R



CONTOUR INTERVAL 10 FEET
NORTH AMERICAN VERTICAL DATUM OF 1988
This map was produced to conform with the
National Geospatial Program US Topo Product Standard, 2011.
A metadata file associated with this product is draft version 0.6.18



ROAD CLASSIFICATION

Expressway	Local Connector
Secondary Hwy	Local Road
Ramp	4WD
Interstate Route	US Route
	State Route

1	2	3
4	5	6
7	8	

ADJOINING QUADRANGLES

1 Masaryktown
2 Spring Lake
3 Lacoochee
4 Ehren
5 Dade City
6 Lutz
7 Wesley Chapel
8 Zephyrhills

SAN ANTONIO, FL
2015

