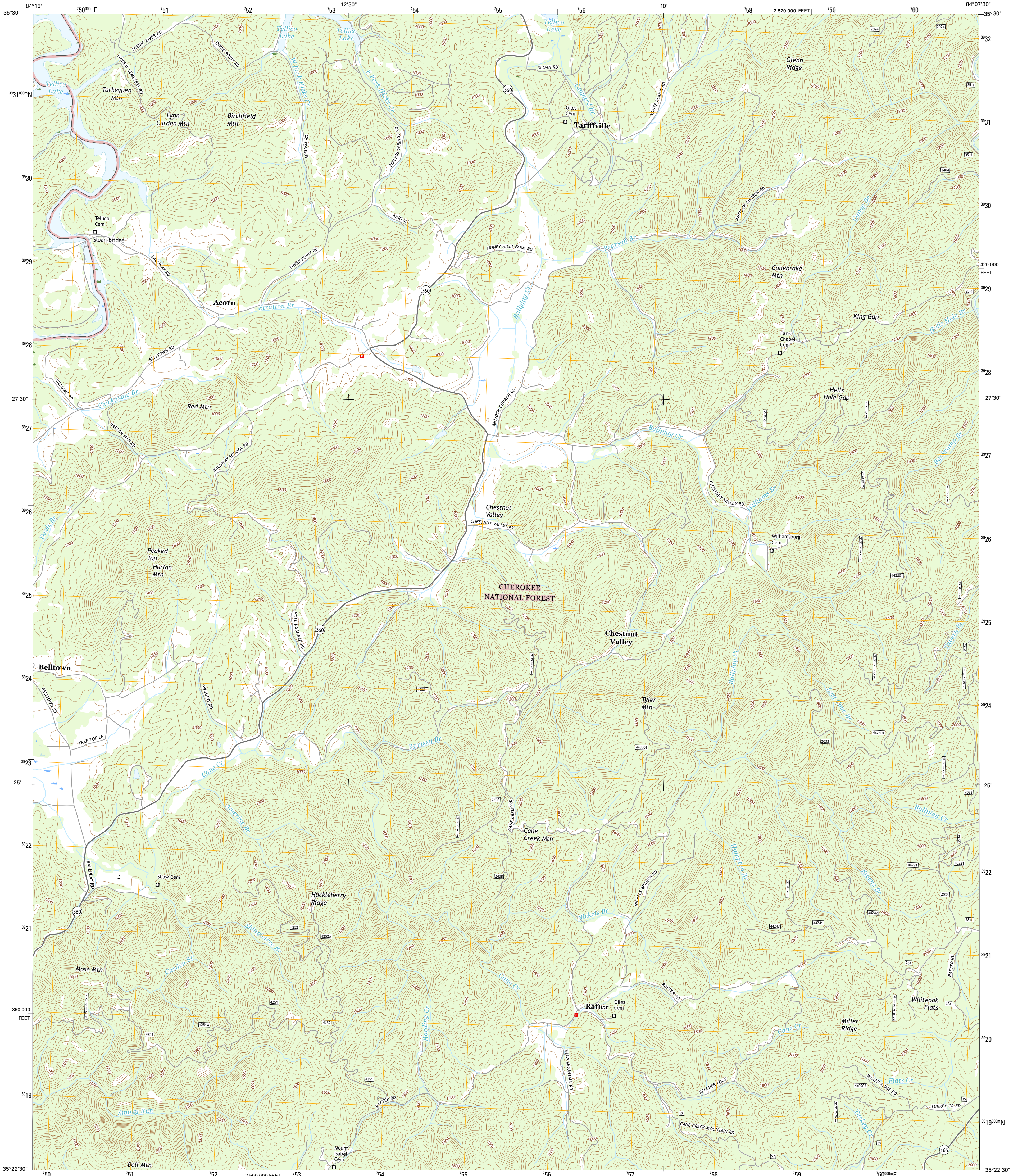




U.S. DEPARTMENT OF THE INTERIOR  
U.S. GEOLOGICAL SURVEY



RAFTER QUADRANGLE  
TENNESSEE-MONROE CO.  
7.5-MINUTE SERIES



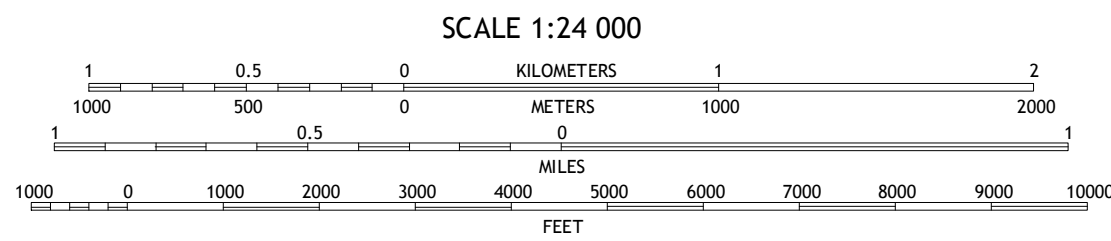
Produced by the United States Geological Survey  
North American Datum of 1983 (NAD83)  
World Geodetic System of 1984 (WGS84)  
1 000-meter grid: Universal Transverse Mercator, Zone 16S  
10 000-foot ticks: Tennessee Coordinate System of 1983

This map is not a legal document. Boundaries may be generalized for this map scale. Private lands within government reservations may not be shown. Obtain permission before entering private lands.

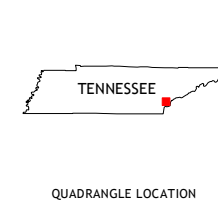
Imagery.....NAIP, May 2014  
Roads.....U.S. Census Bureau, 2015 - 2016  
Roads within US Forest Service Lands.....FSTopo Data with limited Forest Service updates, 2012 - 2016  
Names.....GNIS, 2016  
Hydrography.....National Hydrography Dataset, 2014  
Contours.....National Elevation Dataset, 1999  
Boundaries.....Multiple sources; see metadata file 1972 - 2016  
Wetlands.....FWS National Wetlands Inventory 1977 - 2014

UTM GRID AND 2015 MAGNETIC NORTH DECLINATION AT CENTER OF SHEET

U.S. National Grid
100,000-m Square ID
GE
Grid Zone Designation
16S



This map was produced to conform with the National Geospatial Program US Topo Product Standard, 2011. A metadata file associated with this product is draft version 0.6.19



1	2	3
4	5	6
7	8	9

1 Madisonville  
2 Vonore  
3 Taliasee  
4 Mount Vernon  
5 Whiteoak Flats  
6 Tellico Plains  
7 Bald River Falls  
8 Big Junction

ROAD CLASSIFICATION

Expressway	Local Connector
Secondary Hwy	Local Road
Ramp	4WD
Interstate Route	US Route
FS Primary Route	FS Passenger Route
	State Route
	FS High Clearance Route

Check with local Forest Service unit for current travel conditions and restrictions.

RAFTER, TN  
2016

