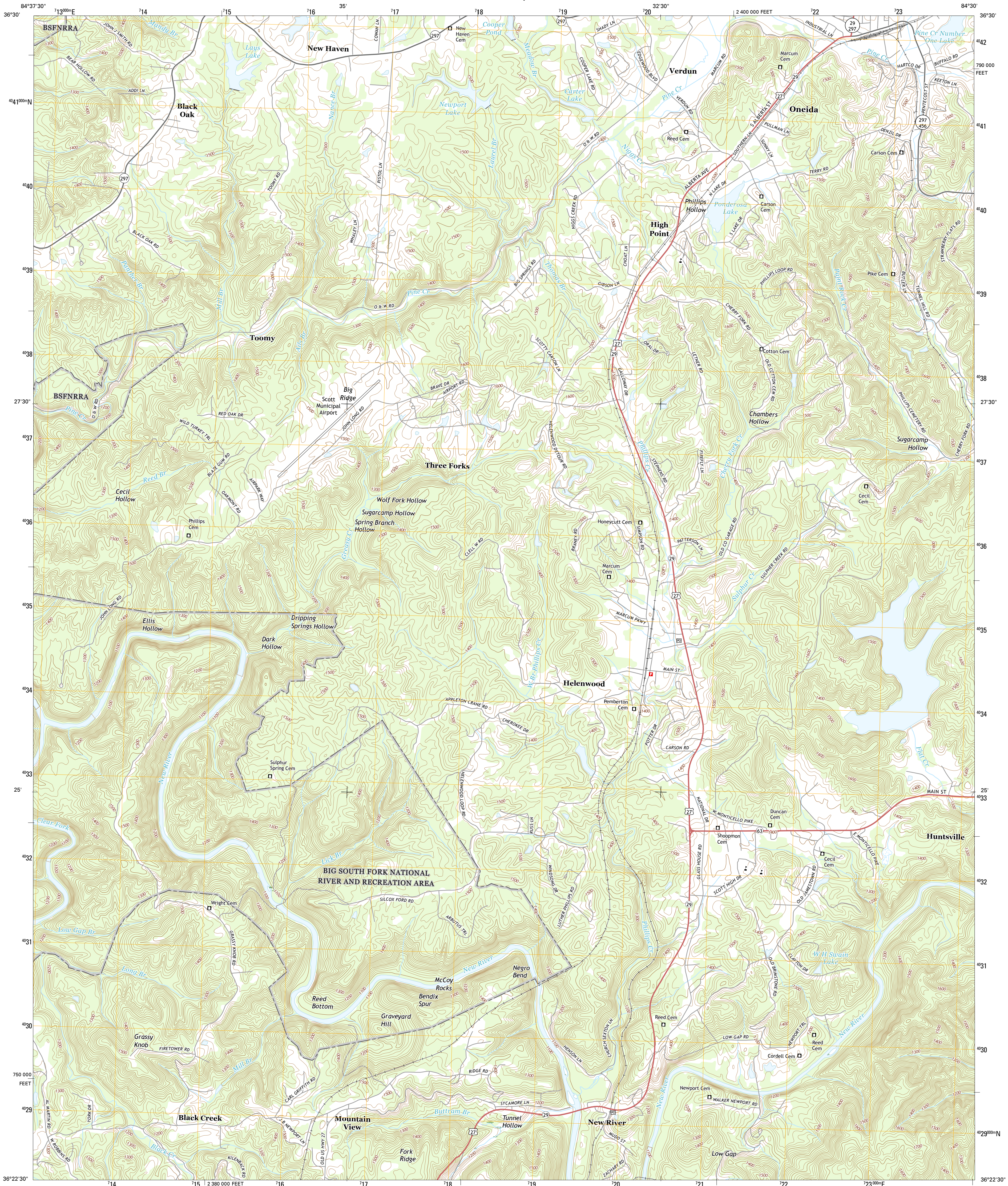




U.S. DEPARTMENT OF THE INTERIOR
U.S. GEOLOGICAL SURVEY



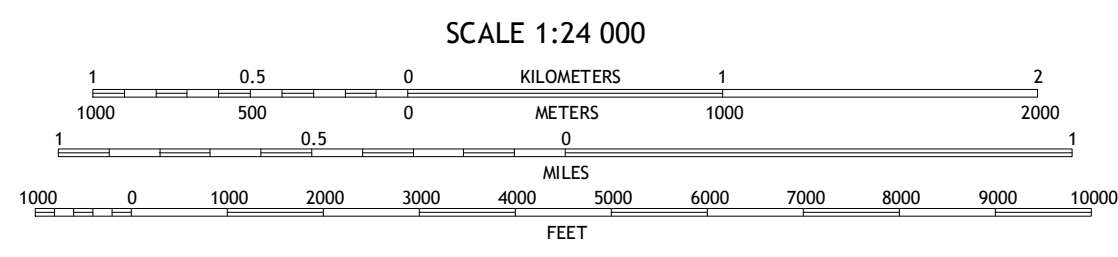
ONEIDA SOUTH QUADRANGLE
TENNESSEE-SCOTT CO.
7.5-MINUTE SERIES



Produced by the United States Geological Survey
North American Datum of 1983 (NAD83)
Roads..... U.S. Census Bureau, 2015 - 2016
Names..... GNIS, 2016
Hydrography..... National Hydrography Dataset, 2014
Contours..... National Elevation Dataset, 1999
Boundaries..... Multiple sources; see metadata file 1972 - 2016
Wetlands..... FWS National Wetlands Inventory 1977 - 2014

UTM GRID AND 2016 MAGNETIC NORTH
DECLINATION AT CENTER OF SHEET

U.S. National Grid
100,000 m Square ID
GF
Grid Zone Designation
16S



CONTOUR INTERVAL 20 FEET
NORTH AMERICAN VERTICAL DATUM OF 1988
This map was produced to conform with the
National Geospatial Program US Topo Product Standard, 2011.
A metadata file associated with this product is draft version 0.6.19



ROAD CLASSIFICATION	
Expressway	Local Connector
Secondary Hwy	Local Road
Ramp	4WD
Interstate Route	US Route
	State Route

1	2	3
4	5	6
7	8	9

1 Barthell SW
2 Oneida North
3 Winfield
4 Honey Creek
5 Huntsville
6 Rugby
7 Robbins
8 Norma

ONEIDA SOUTH, TN
2016

