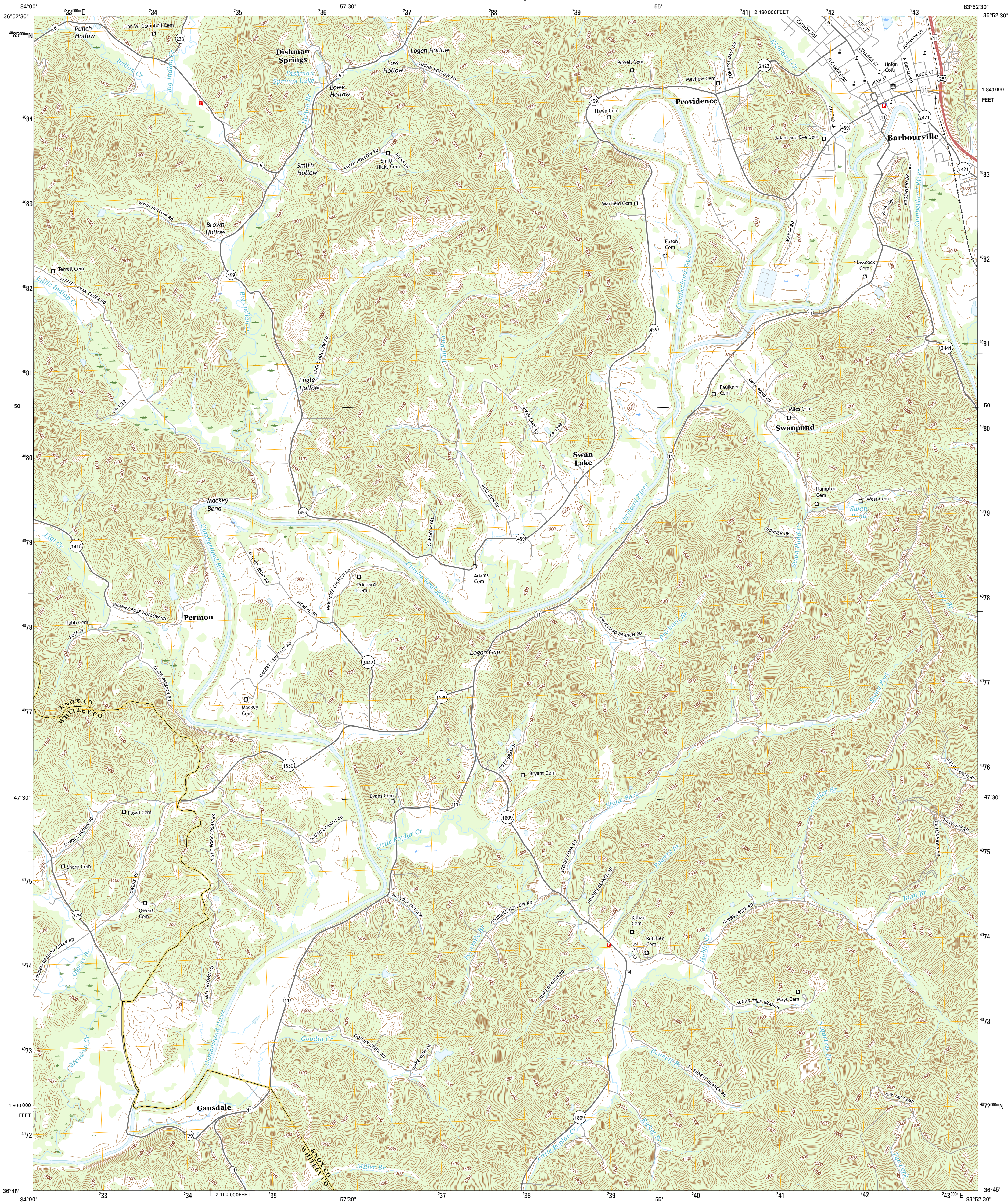




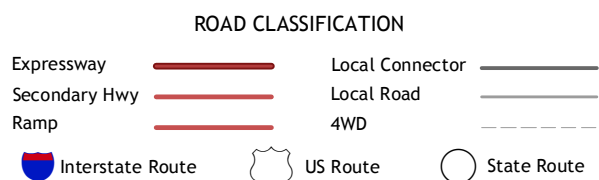
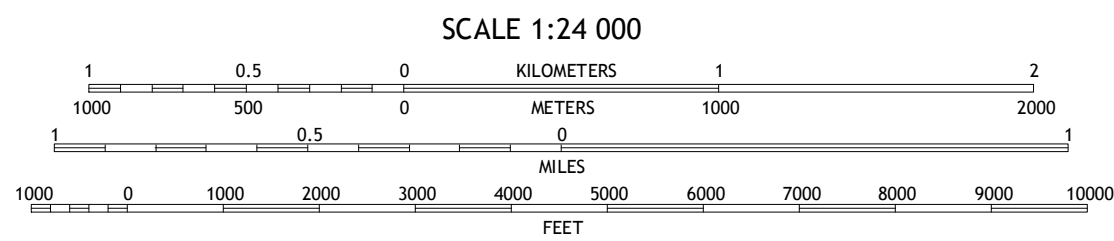
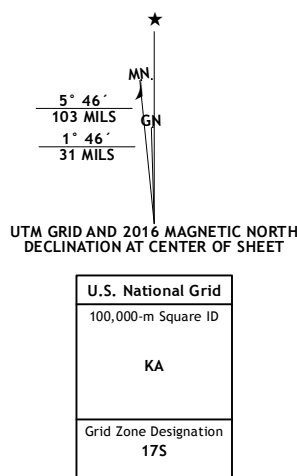
U.S. DEPARTMENT OF THE INTERIOR
U.S. GEOLOGICAL SURVEY



BARBOURVILLE QUADRANGLE
KENTUCKY
7.5-MINUTE SERIES



Produced by the United States Geological Survey
North American Datum of 1983 (NAD83)
World Geodetic System of 1984 (WGS84) Projection and
1 000-meter grid; Universal Transverse Mercator, Zone 17S
10 000-foot ticks; Kentucky Coordinate System of 1983 (south zone)
This map is not a legal document. Boundaries may be generalized for this map scale. Private lands within government reservations may not be shown. Obtain permission before entering private lands.
Imagery.....NAIP, September 2014
Roads.....U.S. Census Bureau, 2014 - 2015
Names.....GNIS, 2015
Hydrography.....National Hydrography Dataset, 2014
Contours.....National Elevation Dataset, 2002
Boundaries.....Multiple sources; see metadata file 1972 - 2015
Wetlands.....FWS National Wetlands Inventory 1977 - 2014



1	2	3
4	5	6
7	8	

1 Corbin
2 Heldrick
3 Fount
4 Rockholds
5 Artemus
6 Saxton
7 Frakes
8 Kayjay

BARBOURVILLE, KY
2016

