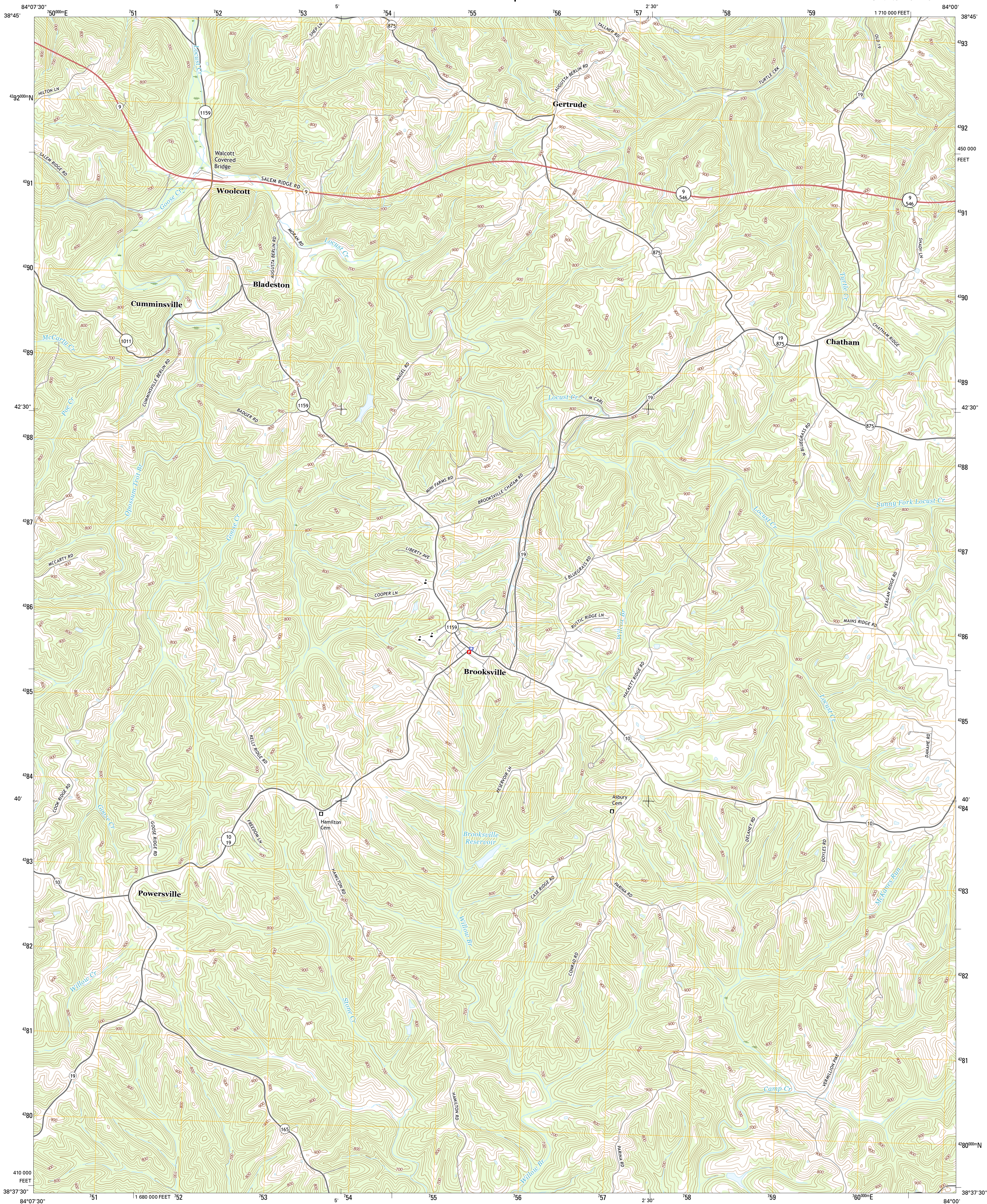




U.S. DEPARTMENT OF THE INTERIOR
U.S. GEOLOGICAL SURVEY



BROOKSVILLE QUADRANGLE
KENTUCKY-BRACKEN CO.
7.5-MINUTE SERIES



Produced by the United States Geological Survey
North American Datum of 1983 (NAD83)
World Geodetic System of 1984 (WGS84). Projection and
1 000-meter grid: Universal Transverse Mercator, Zone 16S
10 000-foot ticks: Kentucky Coordinate System of 1983 (north
zone)

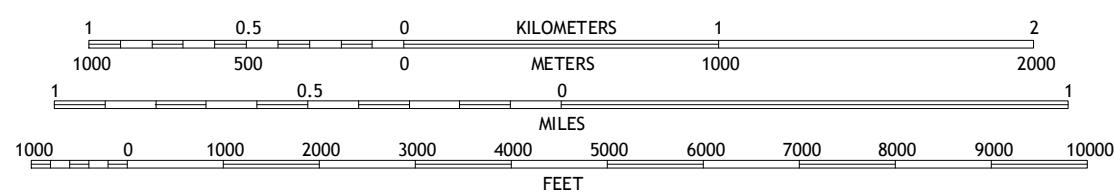
This map is not a legal document. Boundaries may be generalized for this map scale. Private lands within government reservations may not be shown. Obtain permission before entering private lands.

Imagery.....	NAP, July	2014
Roads.....	U.S. Census Bureau, 2015	2016
Names.....	GNIS,	2016
Hydrography.....	National Hydrography Dataset,	2012
Contours.....	National Elevation Dataset,	2004
Boundaries.....	Multiple sources; see metadata file 1972	2016
Wetlands.....	FWS National Wetlands Inventory	1977 - 2014

UTM GRID AND 2016 MAGNETIC NORTH DECLINATION AT CENTER OF SHEET

U.S. National Grid
100,000-m Square ID
GH
Grid Zone Designation
16S

SCALE 1:24 000



CONTOUR INTERVAL 20 FEET
NORTH AMERICAN VERTICAL DATUM OF 1988

This map was produced to conform with the
National Geospatial Program US Topo Product Standard, 2011.
A metadata file associated with this product is draft version 0.6.19



QUADRANGLE LOCATION

1	2	3	1 Moscow
4		5	2 Felicity
6	7	8	3 Higginsport

AD JOINING QUADRANGLES

ROAD CLASSIFICATION

BROOKSVILLE, KY
2016