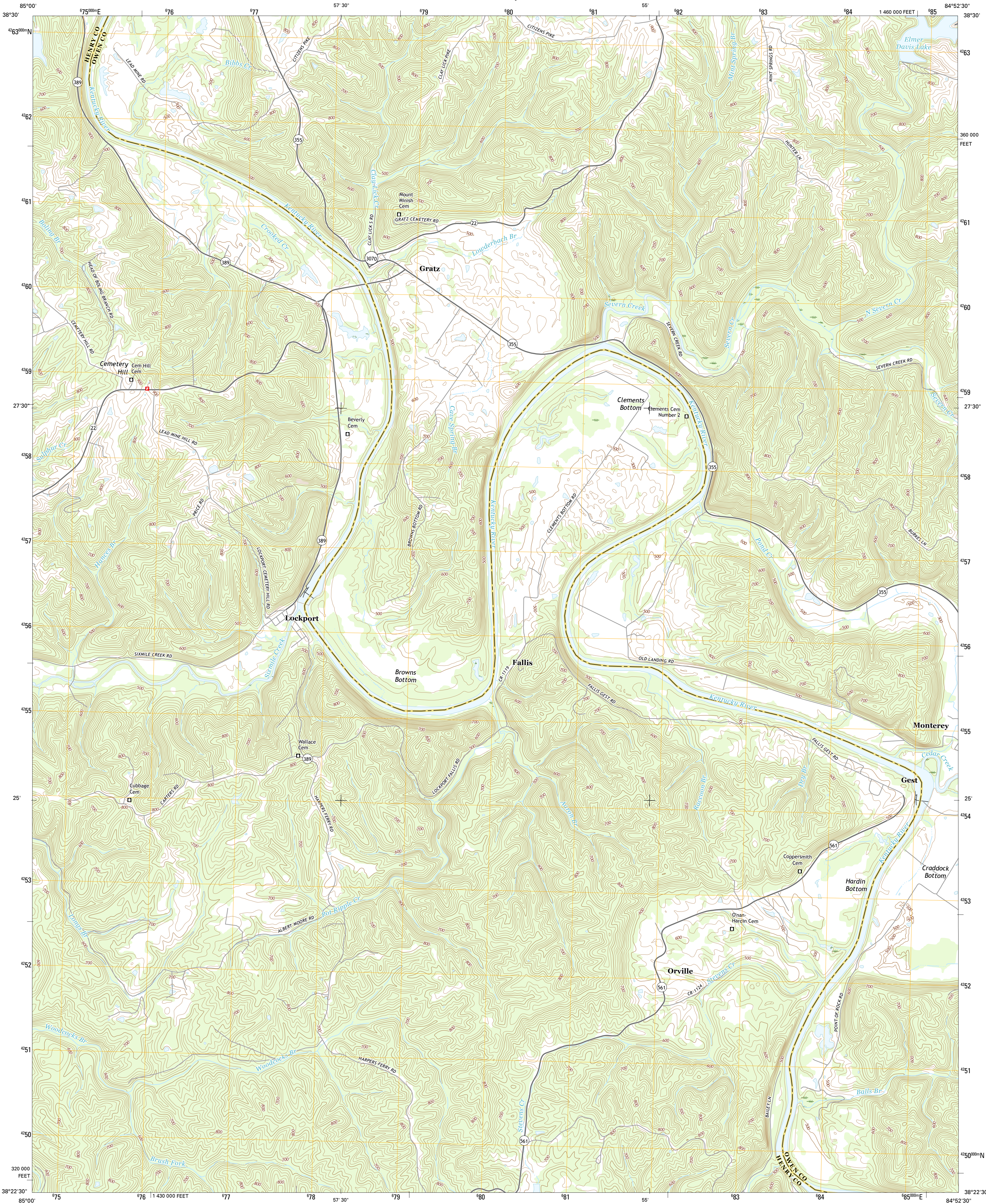




U.S. DEPARTMENT OF THE INTERIOR  
U.S. GEOLOGICAL SURVEY



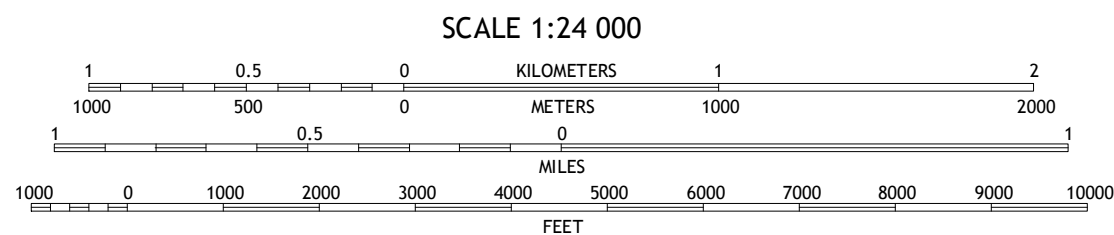
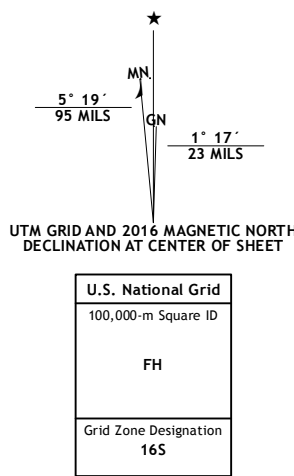
GRATZ QUADRANGLE  
KENTUCKY  
7.5-MINUTE SERIES



Produced by the United States Geological Survey  
North American Datum of 1983 (NAD83)  
World Geodetic System of 1984 (WGS84). Projection and  
1 000-meter grid: Universal Transverse Mercator, Zone 16S  
10 000-foot ticks: Kentucky Coordinate System of 1983 (north  
zone)

This map is not a legal document. Boundaries may be  
generalized for this map scale. Private lands within government  
reservations may not be shown. Obtain permission before  
entering private lands.

Imagery.....N.A.I.P., July 2014  
Roads.....U.S. Census Bureau, 2015 2016  
Names.....GNIS, 2016  
Hydrography.....National Hydrography Dataset, 2014  
Contours.....National Elevation Dataset, 2002  
Boundaries.....Multiple sources; see metadata file 1972 - 2016  
Wetlands.....FWS National Wetlands Inventory 1977 - 2014



CONTOUR INTERVAL 20 FEET  
NORTH AMERICAN VERTICAL DATUM OF 1988

This map was produced to conform with the  
National Geospatial Program US Topo Product Standard, 2011.  
A metadata file associated with this product is draft version 0.6.19



1	2	3
4	5	6
7	8	9

ADJOINING QUADRANGLES

1 Worthville  
2 New Liberty  
3 Owen  
4 Frankfort  
5 Monterey  
6 North Pleasureville  
7 Polsgrove  
8 Switzer

ROAD CLASSIFICATION	
Expressway	Local Connector
Secondary Hwy	Local Road
Ramp	4WD
Interstate Route	US Route
	State Route

GRATZ, KY  
2016

