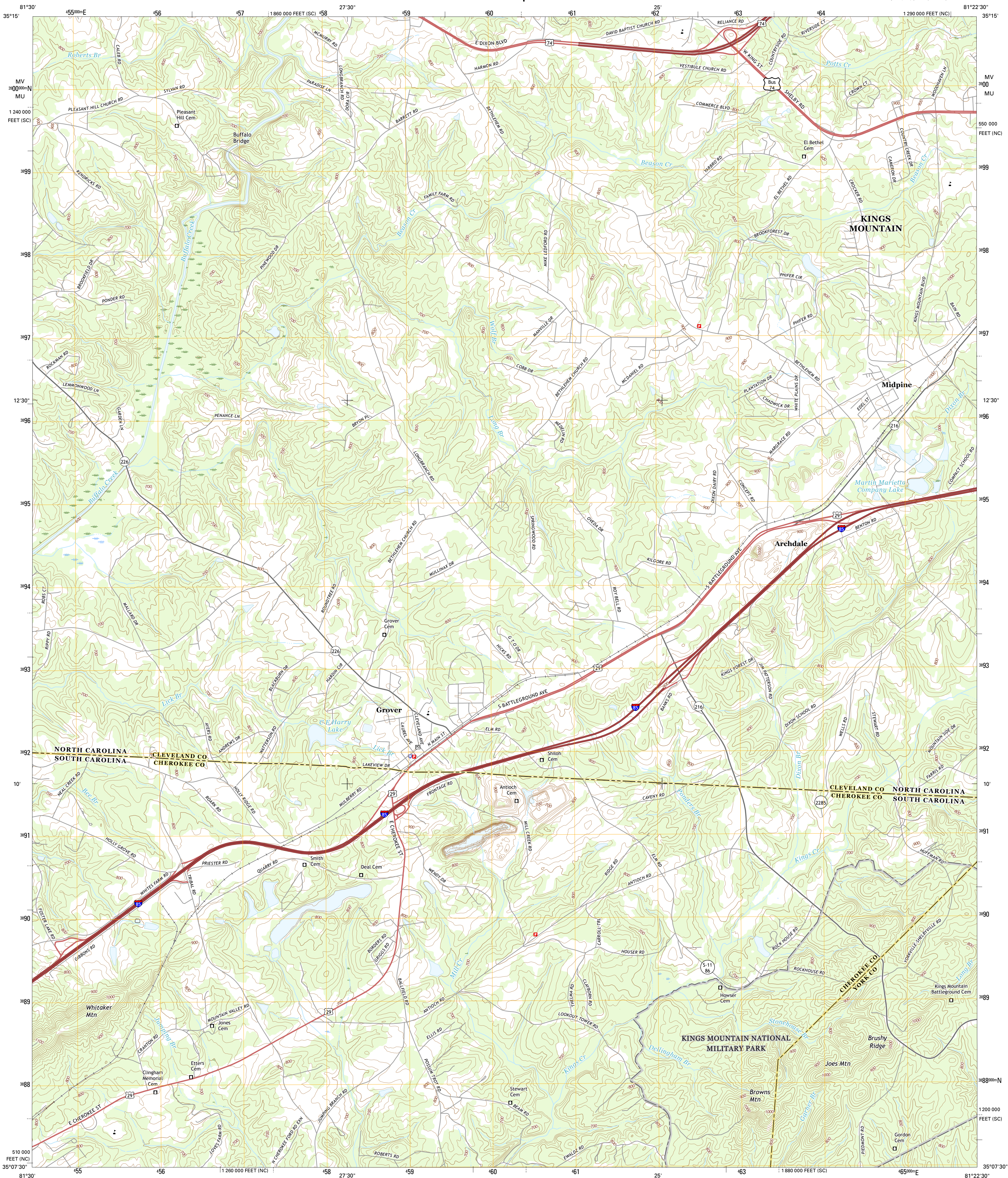




U.S. DEPARTMENT OF THE INTERIOR
U.S. GEOLOGICAL SURVEY



GROVER QUADRANGLE
NORTH CAROLINA-SOUTH CAROLINA
7.5-MINUTE SERIES



Produced by the United States Geological Survey
North American Datum of 1983 (NAD83)
World Geodetic System of 1984 (WGS84) Projection and
1 000-foot grid: Universal Transverse Mercator, Zone 17S
10 000-foot ticks: North Carolina Coordinate System of 1983,
South Carolina Coordinate System of 1983

This map is not a legal document. Boundaries may be
generalized for this map scale. Private lands within government
reservations may not be shown. Obtain permission before
entering private lands.

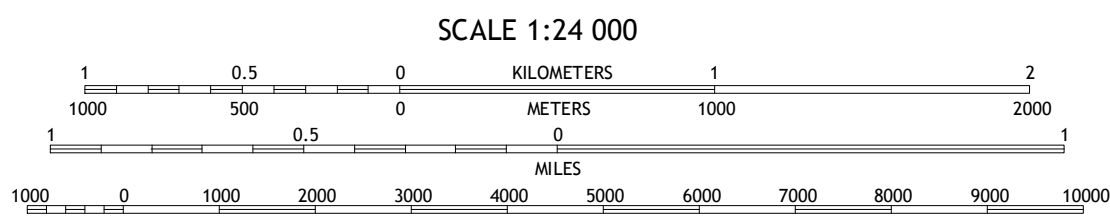
Imagery.....N.A.P., October 2013
Roads.....U.S. Census Bureau, 2015 - 2016
Names.....GNIS, 2016
Hydrography.....National Hydrography Dataset, 2013
Contours.....National Elevation Dataset, 2000
Boundaries.....Multiple sources; see metadata file 1972 - 2016
Wetlands.....FWS National Wetlands Inventory 1977 - 2014

UTM GRID AND 2016 MAGNETIC NORTH
DECLINATION AT CENTER OF SHEET

7° 14' 12.9" N
0° 15' 4" E
4 MILES

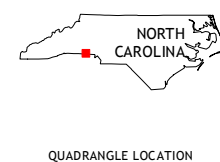
U.S. National Grid
100,000 m Square ID
MV
MU

Grid Zone Designation
17S



CONTOUR INTERVAL 20 FEET
NORTH AMERICAN VERTICAL DATUM OF 1988

This map was produced to conform with the
National Geospatial Program US Topo Product Standard, 2011.
A metadata file associated with this product is draft version 0.6.19



QUADRANGLE LOCATION

1	2	3	1 Shelby
4	5	6	2 Waco
7	8	9	3 Bessemer City
			4 Elksburg North
			5 Kings Mountain
			6 Blacksburg South
			7 Kings Creek
			8 Filbert

GROVER, NC-SC
2016