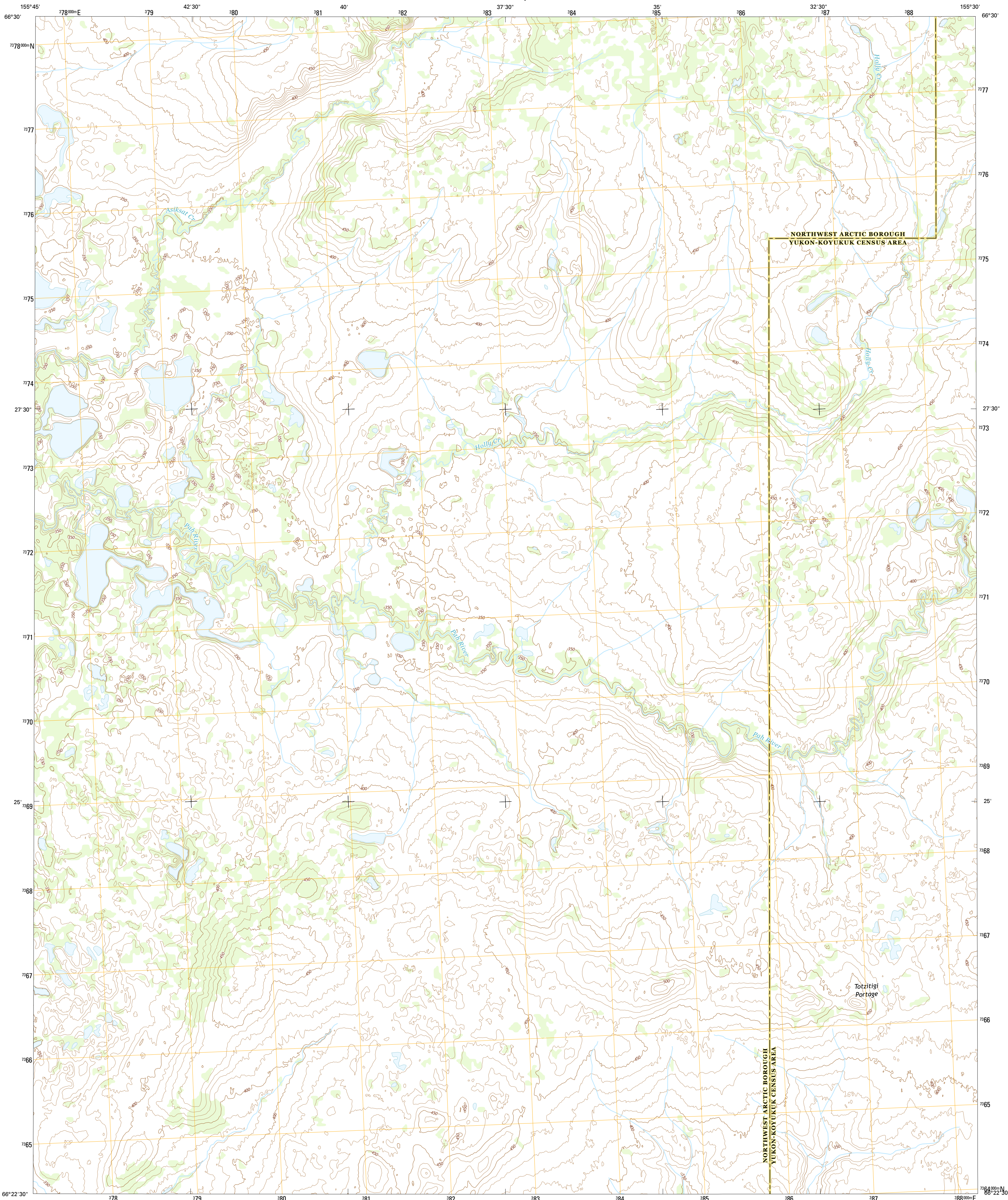




U.S. DEPARTMENT OF THE INTERIOR
U.S. GEOLOGICAL SURVEY



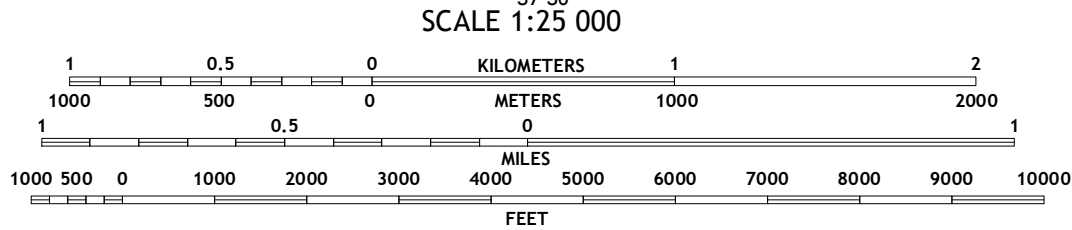
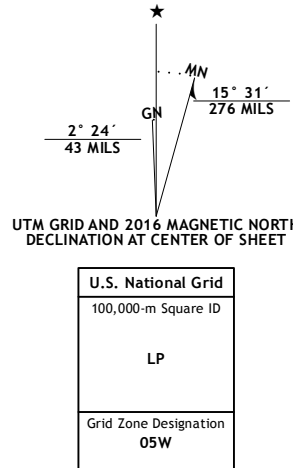
HUGHES B-6 NE QUADRANGLE
ALASKA
7.5-MINUTE SERIES



Produced by the United States Geological Survey
North American Datum of 1983 (NAD83)
World Geodetic System of 1984 (WGS84). Projection and
1 000-meter grid: Universal Transverse Mercator, Zone 05W
10 000-foot ticks: Alaska Coordinate System of 1983 (zones 6
and 4)

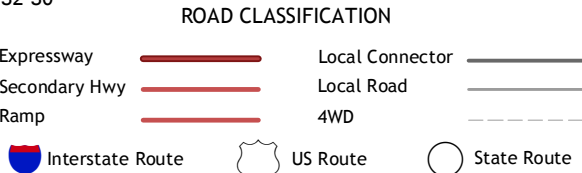
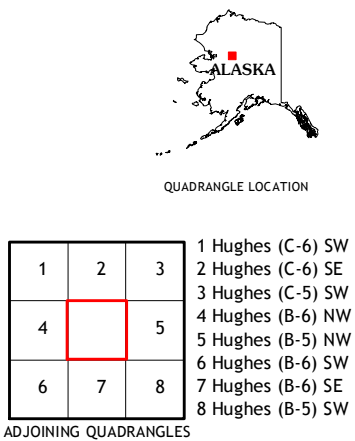
This map is not a legal document. Boundaries may be
generalized for this map scale. Private lands within government
reservations may not be shown. Obtain permission before
entering private lands.

Imagery.....SPOTD, 2009 - 2015
Roads.....Alaska Dept. of Transportation, 2014
Names.....GNIS, 2016
Hydrography.....National Hydrography Dataset, 2010
Contours.....Not Available
Boundaries.....Multiple sources; see metadata file, 1950 - 2016
Public Land Survey System.....BLM, 2006 - 2008
Wetlands.....FWS National Wetlands Inventory 1977 - 2014



CONTOURS NOT PRESENT BECAUSE AVAILABLE ELEVATION
DATA DO NOT MEET ACCURACY REQUIREMENTS

This map was produced to conform with the
National Geospatial Program US Topo Product Standard, 2011.
A metadata file associated with this product is draft version 0.6.18



HUGHES B-6 NE, AK
2016

