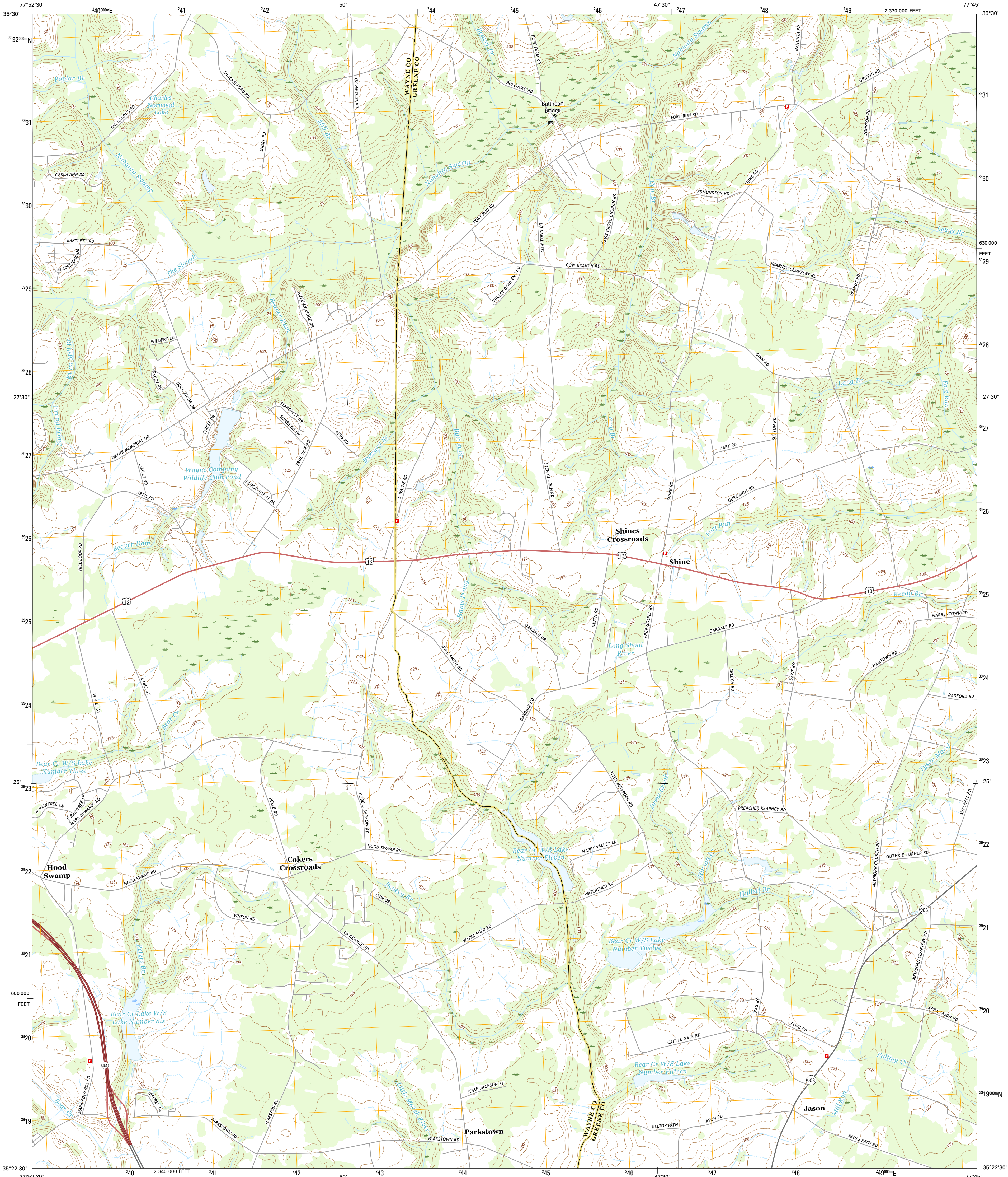




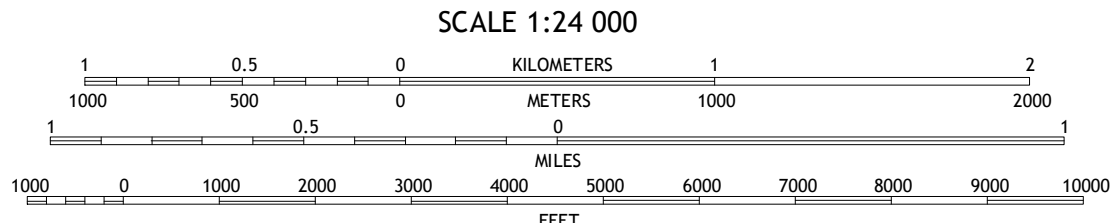
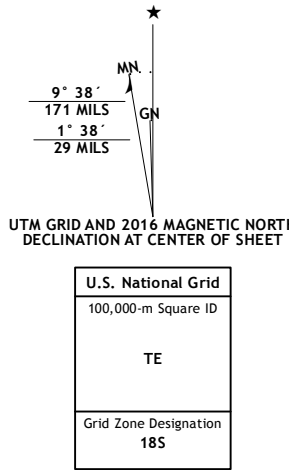
U.S. DEPARTMENT OF THE INTERIOR
U.S. GEOLOGICAL SURVEY



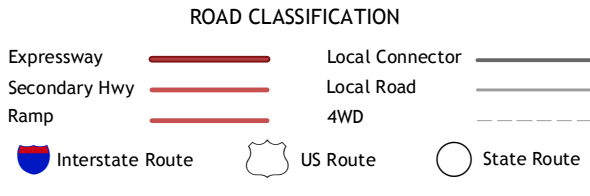
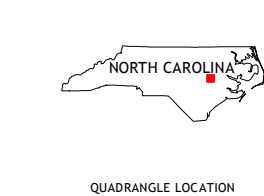
JASON QUADRANGLE
NORTH CAROLINA
7.5-MINUTE SERIES



Produced by the United States Geological Survey
North American Datum of 1983 (NAD83)
Roads..... U.S. Census Bureau, 2015 - 2016
Names..... U.S. Census Bureau, 2015 - 2016
Hydrography..... National Hydrography Dataset, 2014
Contours..... National Elevation Dataset, 2008
Boundaries..... Multiple sources; see metadata file 1972 - 2016
Wetlands..... FWS National Wetlands Inventory 1977 - 2014



CONTOUR INTERVAL 5 FEET
NORTH AMERICAN VERTICAL DATUM OF 1988
This map was produced to conform with the
National Geospatial Program US Topo Product Standard, 2011.
A metadata file associated with this product is draft version 0.6.19



1	2	3
4	5	6
7	8	9

1 Fremont
2 Stantonburg
3 Walstonburg
4 Northeast Goldsboro
5 Snow Hill
6 Southeast Goldsboro
7 La Grange
8 Falling Creek

JASON, NC
2016

