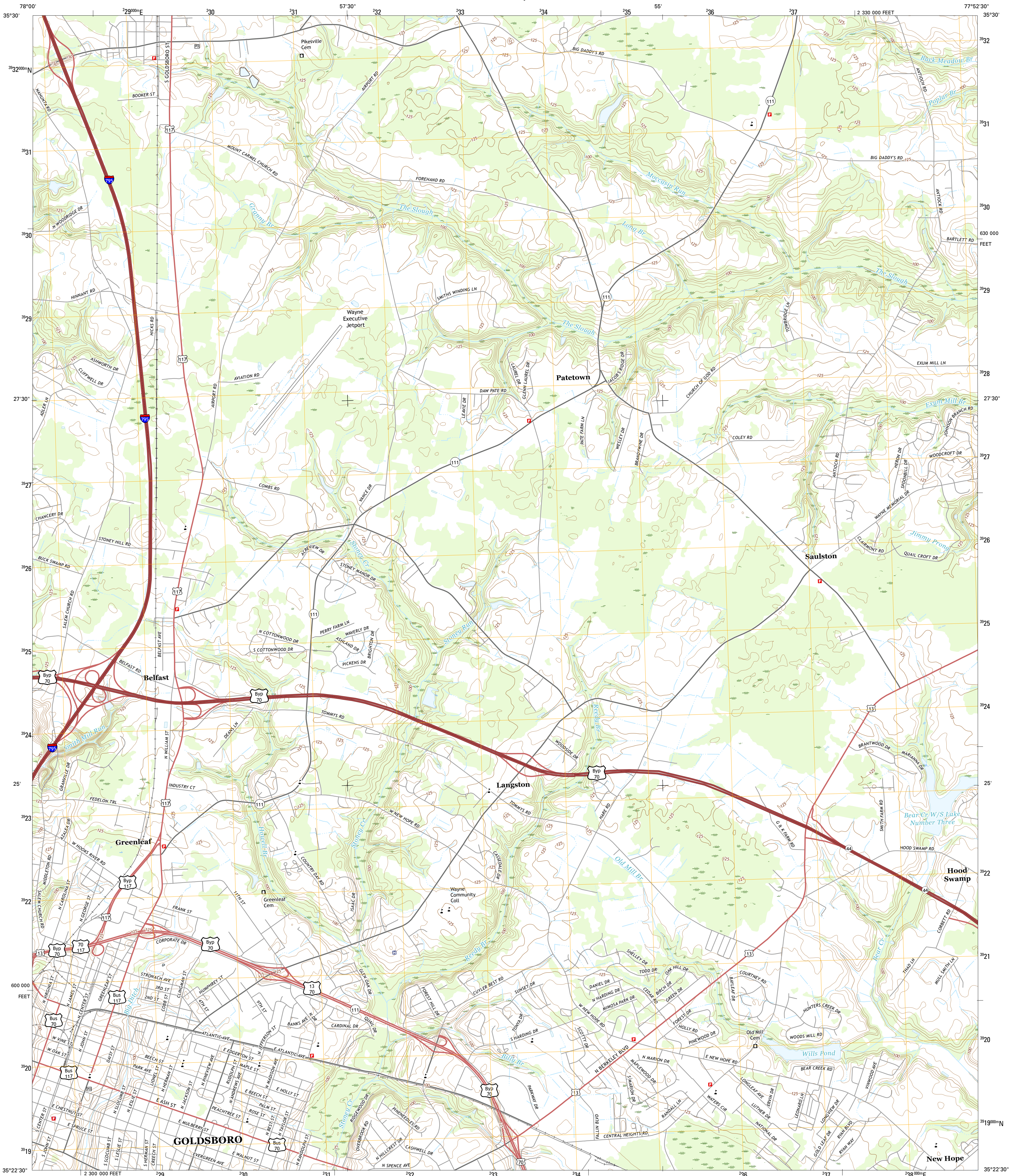




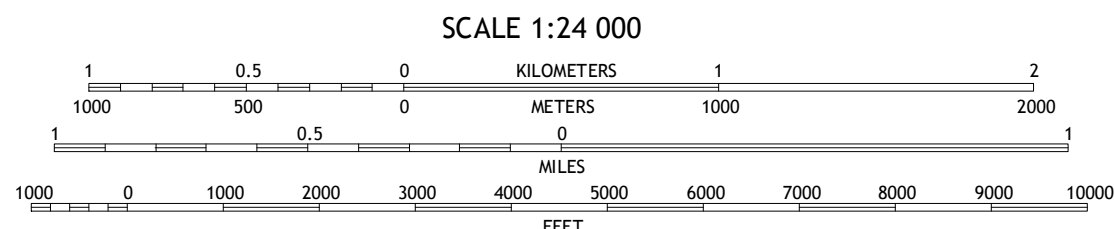
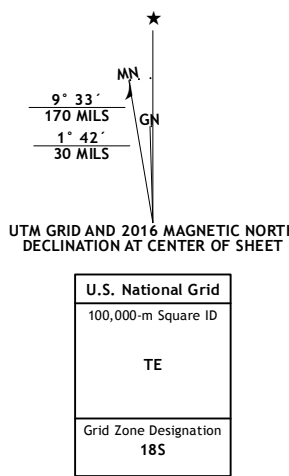
U.S. DEPARTMENT OF THE INTERIOR  
U.S. GEOLOGICAL SURVEY



NORTHEAST GOLDSBORO QUADRANGLE  
NORTH CAROLINA-WAYNE CO.  
7.5-MINUTE SERIES



**Produced by the United States Geological Survey**  
North American Datum of 1983 (NAD83)  
Roads..... U.S. Census Bureau, 2015 - 2016  
Names..... GNIS, 2016  
Hydrography..... National Hydrography Dataset, 2014  
Contours..... National Elevation Dataset, 2008  
Boundaries..... Multiple sources; see metadata file 1972-2016  
Wetlands..... FWS National Wetlands Inventory 1977 - 2014



CONTOUR INTERVAL 5 FEET  
NORTH AMERICAN VERTICAL DATUM OF 1988  
This map was produced to conform with the  
National Geospatial Program US Topo Product Standard, 2011.  
A metadata file associated with this product is draft version 0.6.19



ROAD CLASSIFICATION	
Expressway	Local Connector
Secondary Hwy	Local Road
Ramp	4WD
Interstate Route	US Route
	State Route

1	2	3
4	5	6
7	8	9

ADJOINING QUADRANGLES

NORTHEAST GOLDSBORO, NC  
2016

