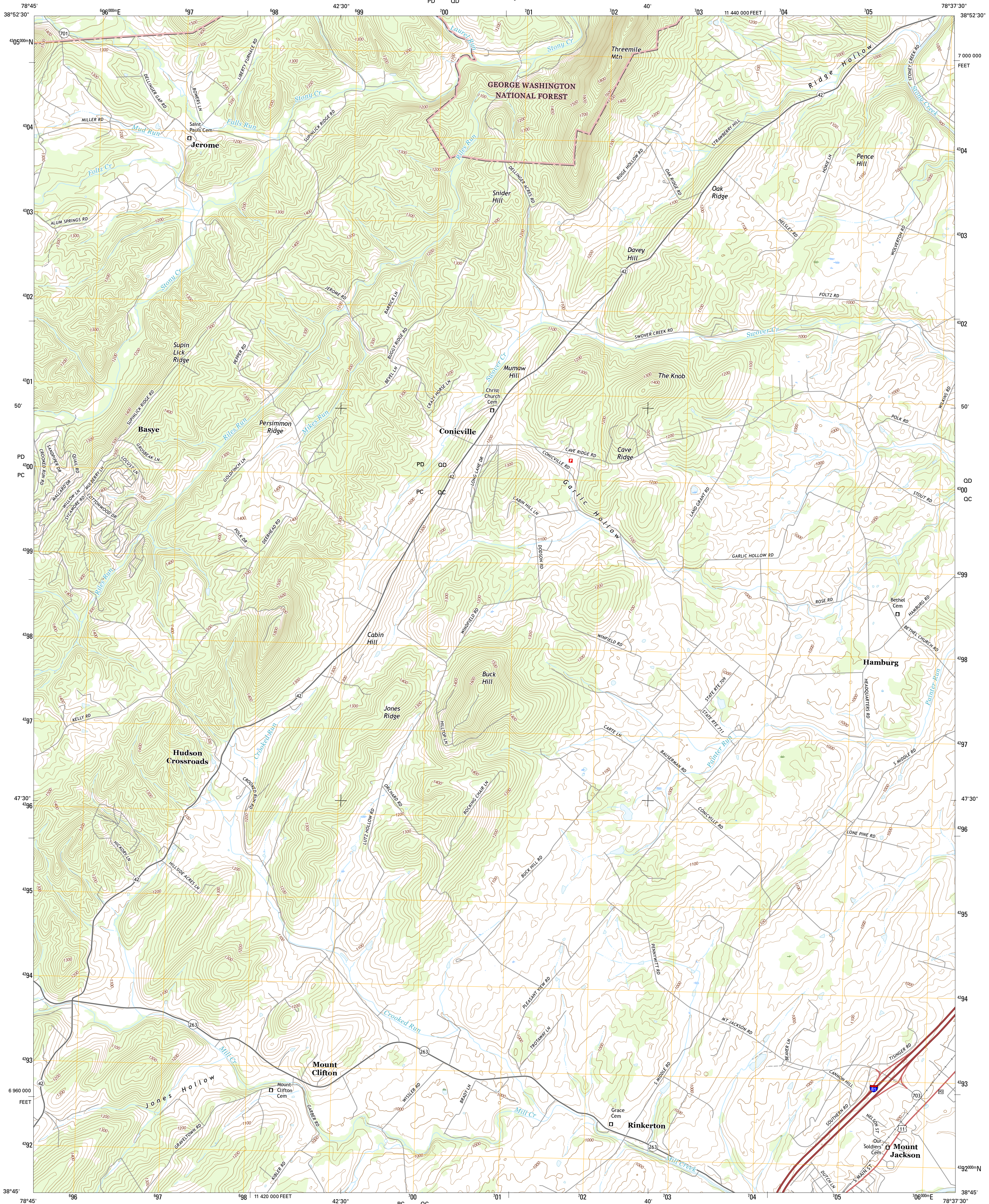




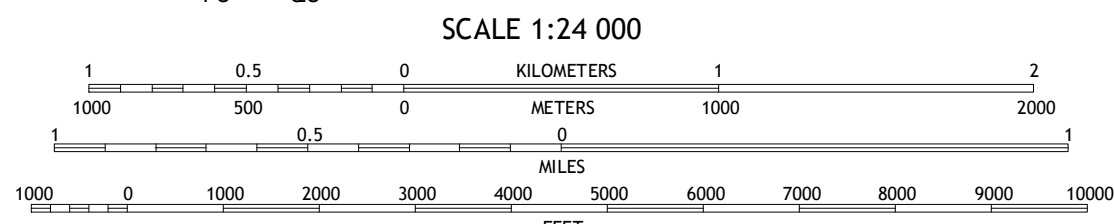
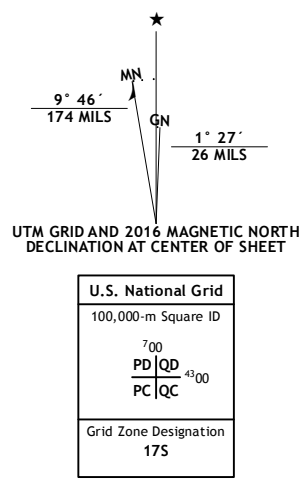
U.S. DEPARTMENT OF THE INTERIOR
U.S. GEOLOGICAL SURVEY



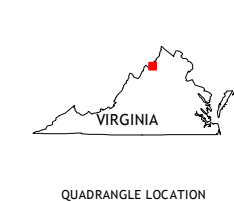
CONICVILLE QUADRANGLE
VIRGINIA-SHENANDOAH CO.
7.5-MINUTE SERIES



Produced by the United States Geological Survey
North American Datum of 1983 (NAD83)
World Geodetic System of 1984 (WGS84). Projection and
1000-meter grid: Universal Transverse Mercator, Zone 17S
10 000-foot ticks: Virginia Coordinate System of 1983 (north
zone)
This map is not a legal document. Boundaries may be
generalized for this map scale. Private lands within government
reservations may not be shown. Obtain permission before
entering private lands.
Imagery.....NAIP, August 2014
Roads.....U.S. Census Bureau, 2015 - 2016
Roads within US Forest Service Lands.....FSTopo Data
with limited Forest Service updates, 2012 - 2016
Names.....National Hydrography Dataset, 2014
Contours.....National Elevation Dataset, 2014
Boundaries.....Multiple sources; see metadata file 1972 - 2016
Wetlands.....FWS National Wetlands Inventory 1977 - 2014



CONTOUR INTERVAL 20 FEET
NORTH AMERICAN VERTICAL DATUM OF 1988
This map was produced to conform with the
National Geospatial Program US Topo Product Standard, 2011.
A metadata file associated with this product is draft version 0.6.19



1	2	3
4	5	6
7	8	9

ADJOINING QUADRANGLES

1 Lost City
2 Wolf Gap
3 Woodstock
4 Oriskany Springs
5 Edinburg
6 Timberville
7 New Market
8 Hamburg

ROAD CLASSIFICATION		
Expressway	Local Connector	State Route
Secondary Hwy	Local Road	FS High Clearance Route
Ramp	4WD	
FS Interstate Route	US Route	FS Passenger Route
FS Primary Route	FS Passenger Route	

Check with local Forest Service unit
for current travel conditions and restrictions.

CONICVILLE, VA
2016

