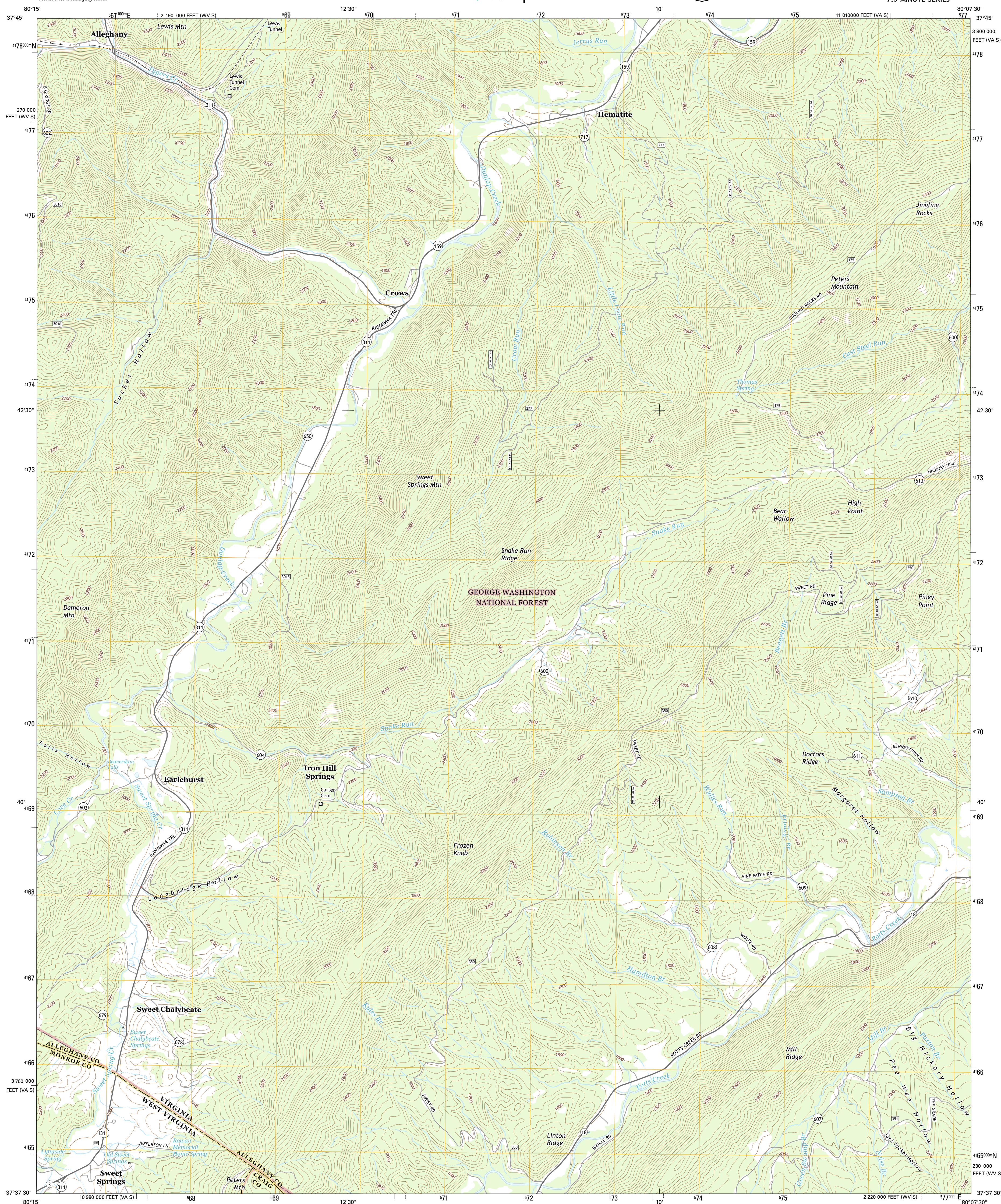




ALLEGHANY QUADRANGLE  
VIRGINIA-WEST VIRGINIA  
7.5-MINUTE SERIES



Produced by the United States Geological Survey

Produced by the United States Geological Survey  
North American Datum of 1983 (NAD83)  
World Geodetic System of 1984 (WGS84). Projection and  
1 000-meter grid: Universal Transverse Mercator, Zone 17S  
10 000-foot ticks: Virginia Coordinate System of 1983 (south  
zone), West Virginia Coordinate System of 1983 (south zone)

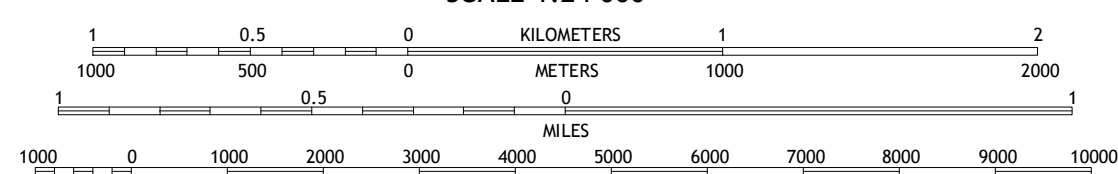
This map is not a legal document. Boundaries may be generalized for this map scale. Private lands within government reservations may not be shown. Obtain permission before entering private lands.

Imagery.....	NALIP,	October	2012
Roads.....	U.S. Census Bureau,	2015	2012
Roads within US Forest Service Lands.....	FTSP02		
	with limited Forest Service updates,	2012	
Names.....	GNIS,		
Hydrography.....	National Hydrography Dataset,		
Contours.....	National Elevation Dataset,		
Boundaries.....	Multiple sources; see metadata file	2012	
Wetlands.....	FWS National Wetlands Inventory	1977	2012

UTM GRID AND 2016 MAGNETIC NORTH  
DECLINATION AT CENTER OF SHEET

U.S. National Grid
100,000-m Square ID
<b>NB</b>
Grid Zone Designation
<b>17S</b>

SCALE 1:24 000



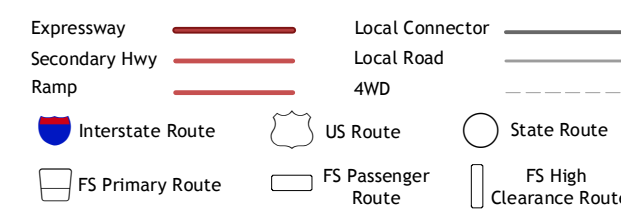
CONTOUR INTERVAL 40 FEET  
NORTH AMERICAN VERTICAL DATUM OF 1988

This map was produced to conform with the  
National Geospatial Program US Topo Product Standard, 2011.  
A metadata file associated with this product is draft version 0.6.19





## ROAD CLASSIFICATION



Check with local Forest Service unit  
for current travel conditions and restrictions.

1	2	3	1 White Sulphur Springs
4		5	2 Jerrys Run
6	7	8	3 Callaghan

ADJOINING QUADRANGLES

- 4 Glace
- 5 Jordan Mines
- 6 Paint Bank
- 7 Potts Creek
- 8 New Castle

ALLEGHANY, VA-WV  
2016

