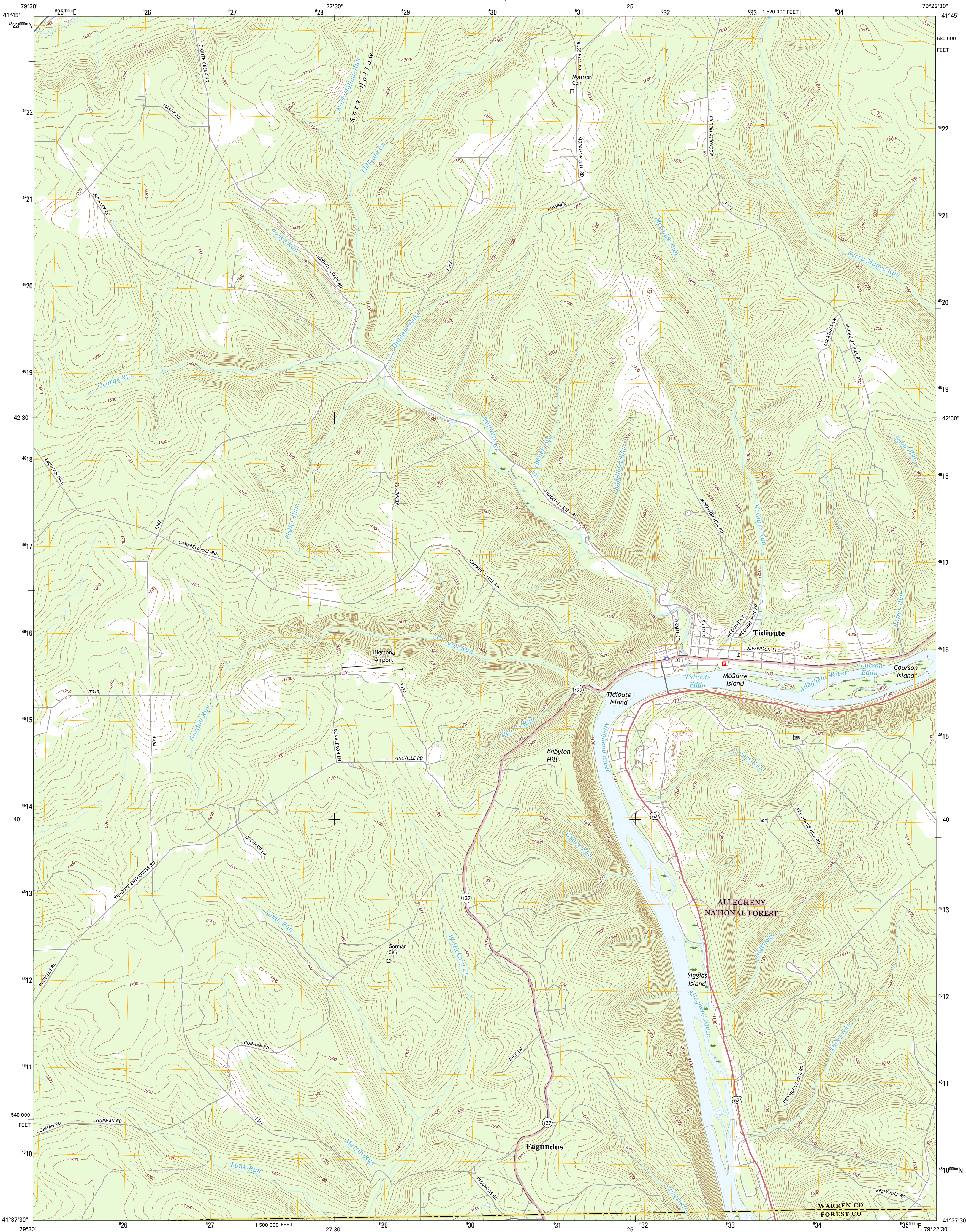




U.S. DEPARTMENT OF THE INTERIOR
U.S. GEOLOGICAL SURVEY



TIDIOUTE QUADRANGLE
PENNSYLVANIA
7.5-MINUTE SERIES

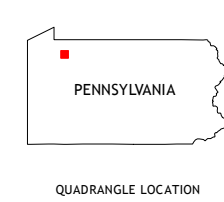
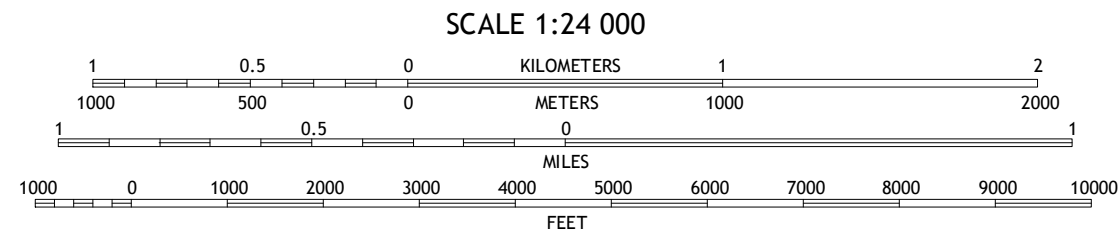
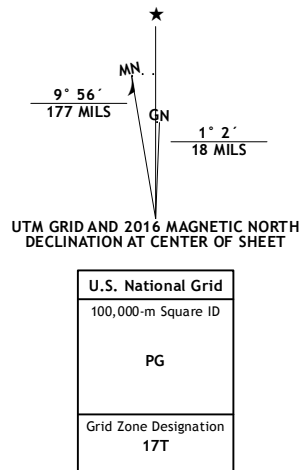


Produced by the United States Geological Survey

North American Datum of 1983 (NAD83)
World Geodetic System of 1984 (WGS84), Projection and
1 000-meter grid: Universal Transverse Mercator, Zone 17T
10 000-foot ticks: Pennsylvania Coordinate System of 1983
(north zone)

This map is not a legal document. Boundaries may be
generalized for this map scale. Private lands within government
reservations may not be shown. Obtain permission before
entering private lands.

Imagery.....NAIP, June 2013
Roads.....U.S. Census Bureau, 2015 - 2016
Roads within US Forest Service Lands.....FSTopo Data
with limited Forest Service updates, 2012 - 2016
Names.....National Hydrography Dataset, 2013
Hydrography.....National Elevation Dataset, 2010
Contours.....Multiple sources; see metadata file 1972 - 2016
Boundaries.....Multiple sources; see metadata file 1972 - 2016
Wetlands.....FWS National Wetlands Inventory 1977 - 2014



QUADRANGLE LOCATION

| | | |
|---|---|---|
| 1 | 2 | 3 |
| 4 | 5 | 6 |
| 7 | 8 | 9 |

1 Spring Creek
2 Pittsfield
3 Youngsville
4 Grand Valley
5 Cobham
6 Pleasantville
7 West Hickory
8 Kelleysville

ROAD CLASSIFICATION

| | |
|------------------|-------------------------|
| Expressway | Local Connector |
| Secondary Hwy | Local Road |
| Ramp | 4WD |
| Interstate Route | US Route |
| FS Primary Route | FS Passenger Route |
| | FS High Clearance Route |

Check with local Forest Service unit
for current travel conditions and restrictions.

TIDIOUTE, PA
2016

