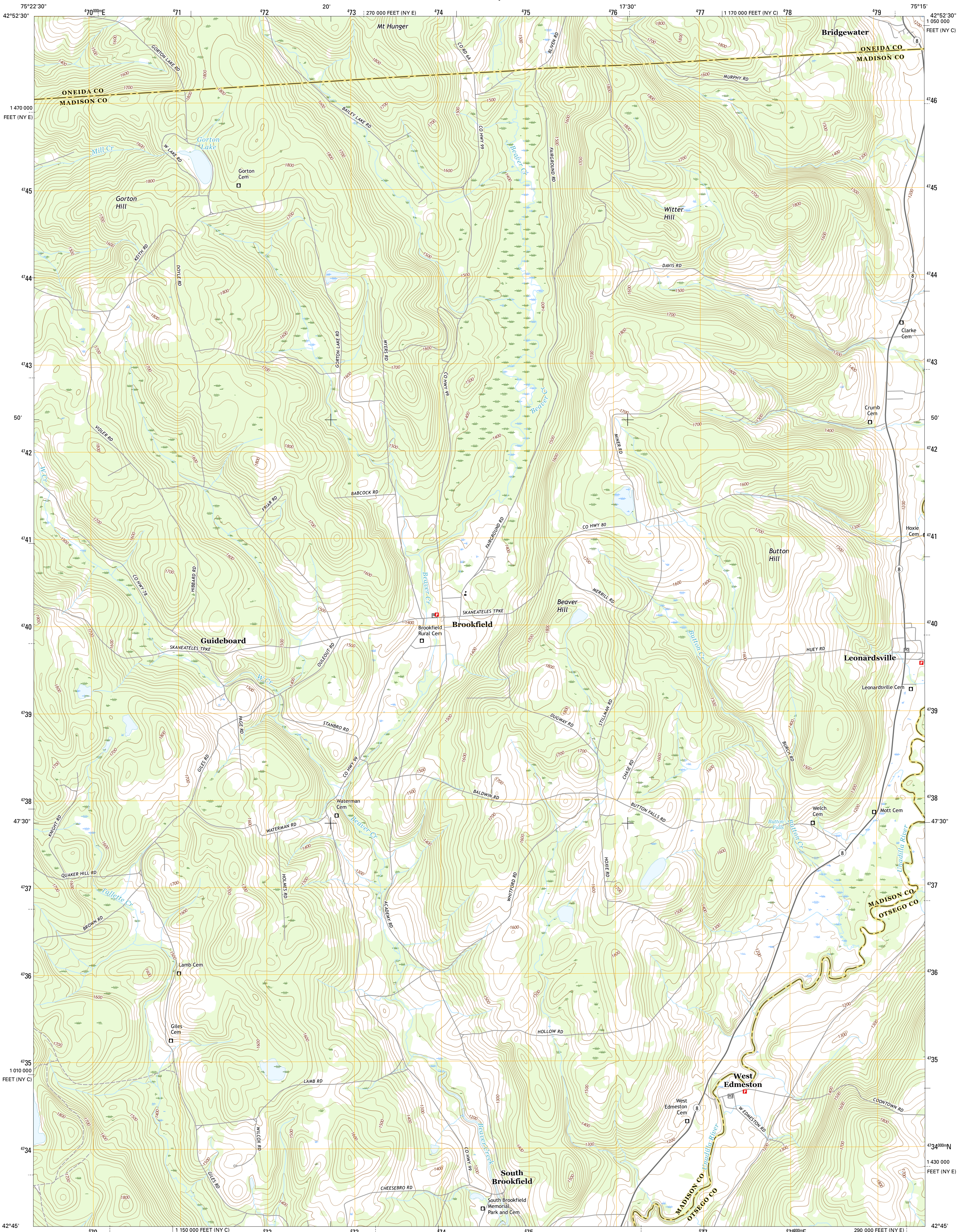




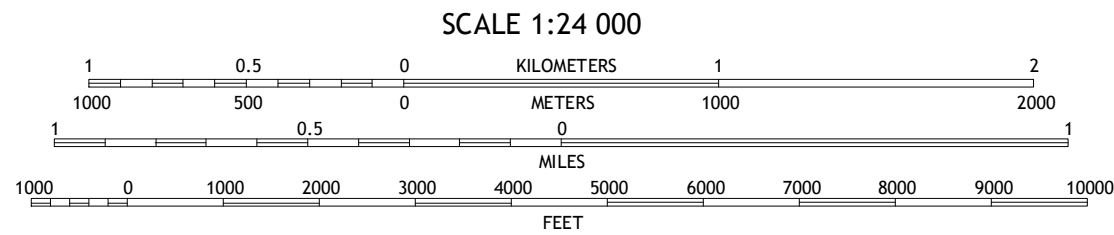
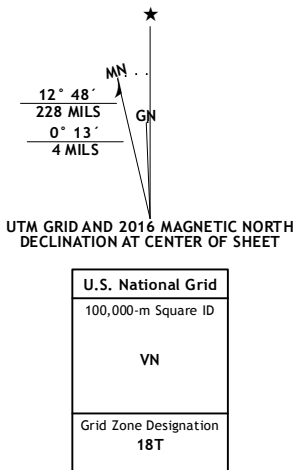
U.S. DEPARTMENT OF THE INTERIOR  
U.S. GEOLOGICAL SURVEY



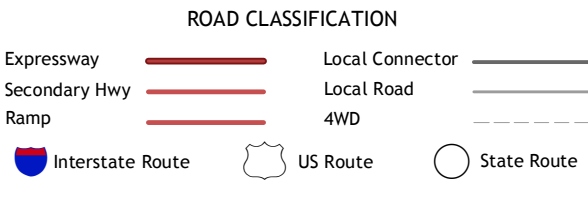
BROOKFIELD QUADRANGLE  
NEW YORK  
7.5-MINUTE SERIES



Produced by the United States Geological Survey  
North American Datum of 1983 (NAD83)  
World Geodetic System of 1984 (WGS84) - Projection and  
1 000-meter grid: Universal Transverse Mercator, Zone 18T  
10 000-foot ticks: New York Coordinate System of 1983 (central  
and east zones)  
This map is not a legal document. Boundaries may be  
generalized for this map scale. Private lands within government  
reservations may not be shown. Obtain permission before  
entering private lands.  
Imagery.....NAIP, July 2013  
Roads.....U.S. Census Bureau, 2015 - 2016  
Names.....GNIS, 2016  
Hydrography.....National Hydrography Dataset, 2013  
Contours.....National Elevation Dataset, 1999  
Boundaries.....Multiple sources: see metadata file 1972 - 2016  
Wetlands.....FWS National Wetlands Inventory 1977 - 2014



CONTOUR INTERVAL 20 FEET  
NORTH AMERICAN VERTICAL DATUM OF 1988  
This map was produced to conform with the  
National Geospatial Program US Topo Product Standard, 2011.  
A metadata file associated with this product is draft version 0.6.19



1	2	3
4	5	6
7	8	9

ADJOINING QUADRANGLES

1 Oriskany Falls  
2 Cassville  
3 West Winfield  
4 Hubbardville  
5 Unadilla Forks  
6 Sherburne  
7 New Berlin North  
8 Edmeston

BROOKFIELD, NY  
2016

