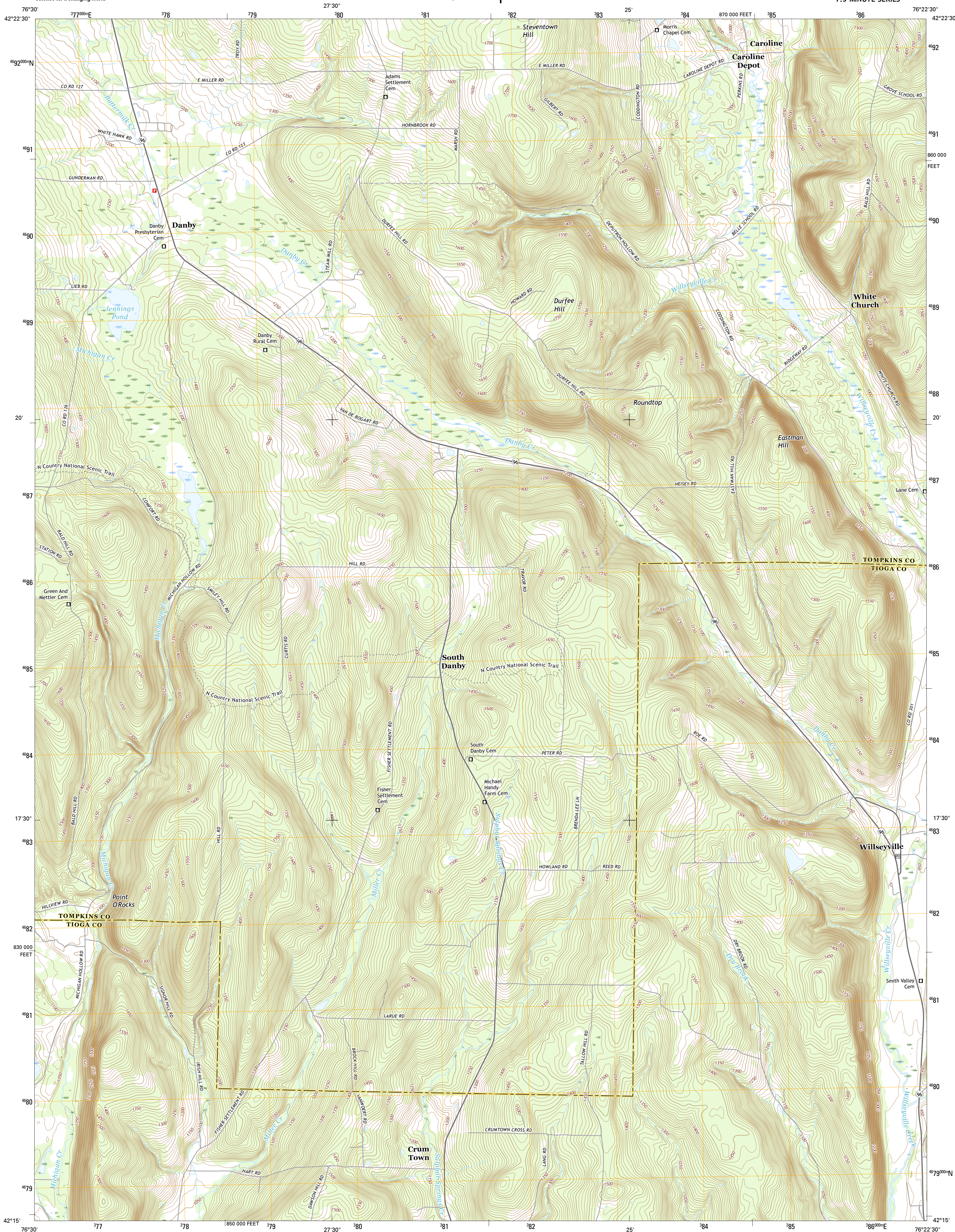




U.S. DEPARTMENT OF THE INTERIOR  
U.S. GEOLOGICAL SURVEY



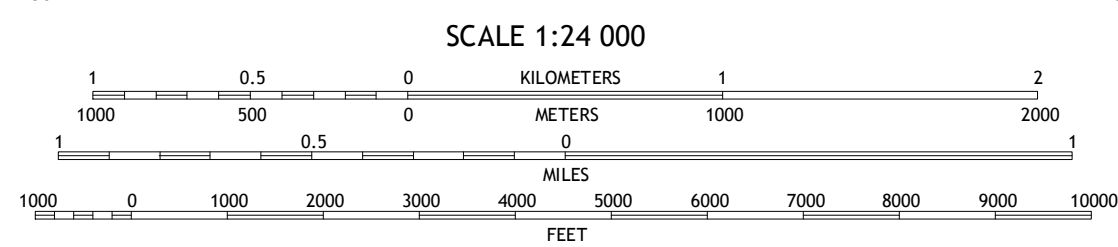
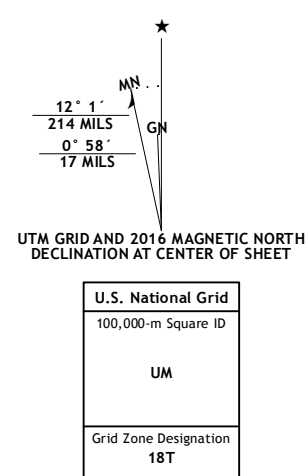
**WILLSEYVILLE QUADRANGLE**  
NEW YORK  
7.5-MINUTE SERIES



**Produced by the United States Geological Survey**  
North American Datum of 1983 (NAD83)  
World Geodetic System of 1984 (WGS84). Projection and  
1 000-meter grid: Universal Transverse Mercator, Zone 18T  
10 000-foot ticks: New York Coordinate System of 1983 (central  
zone)

This map is not a legal document. Boundaries may be generalized for this map scale. Private lands within government reservations may not be shown. Obtain permission before entering private lands.

Imagery.....	NAIP, June	2013
Roads.....	U.S. Census Bureau,	2015 - 2016
Names.....	GNIS,	2016
Hydrography.....	National Hydrography Dataset,	2013
Contours.....	National Elevation Dataset,	1999
Boundaries.....	Multiple sources; see metadata file	1972 - 2016
Wetlands.....	FWS National Wetlands Inventory	1977 - 2014



CONTOUR INTERVAL 10 FEET  
NORTH AMERICAN VERTICAL DATUM OF 1988



This map was produced to conform with the  
National Geospatial Program US Topo Product Standard, 2011.  
A metadata file associated with this product is draft version 0.6.19






1	2	3
4		5
6	7	8

ADJOINING QUADRANGLES

### ROAD CLASSIFICATION

Expressway		Local Connector	
Secondary Hwy		Local Road	
Ramp		4WD	

 Interstate Route     US Route     State Route

1	Ithaca West
2	Ithaca East
3	Dryden
4	West Danby
5	Speedsville
6	Van Etten
7	Spencer
8	Candor

WILLSEYVILLE, NY  
2016

