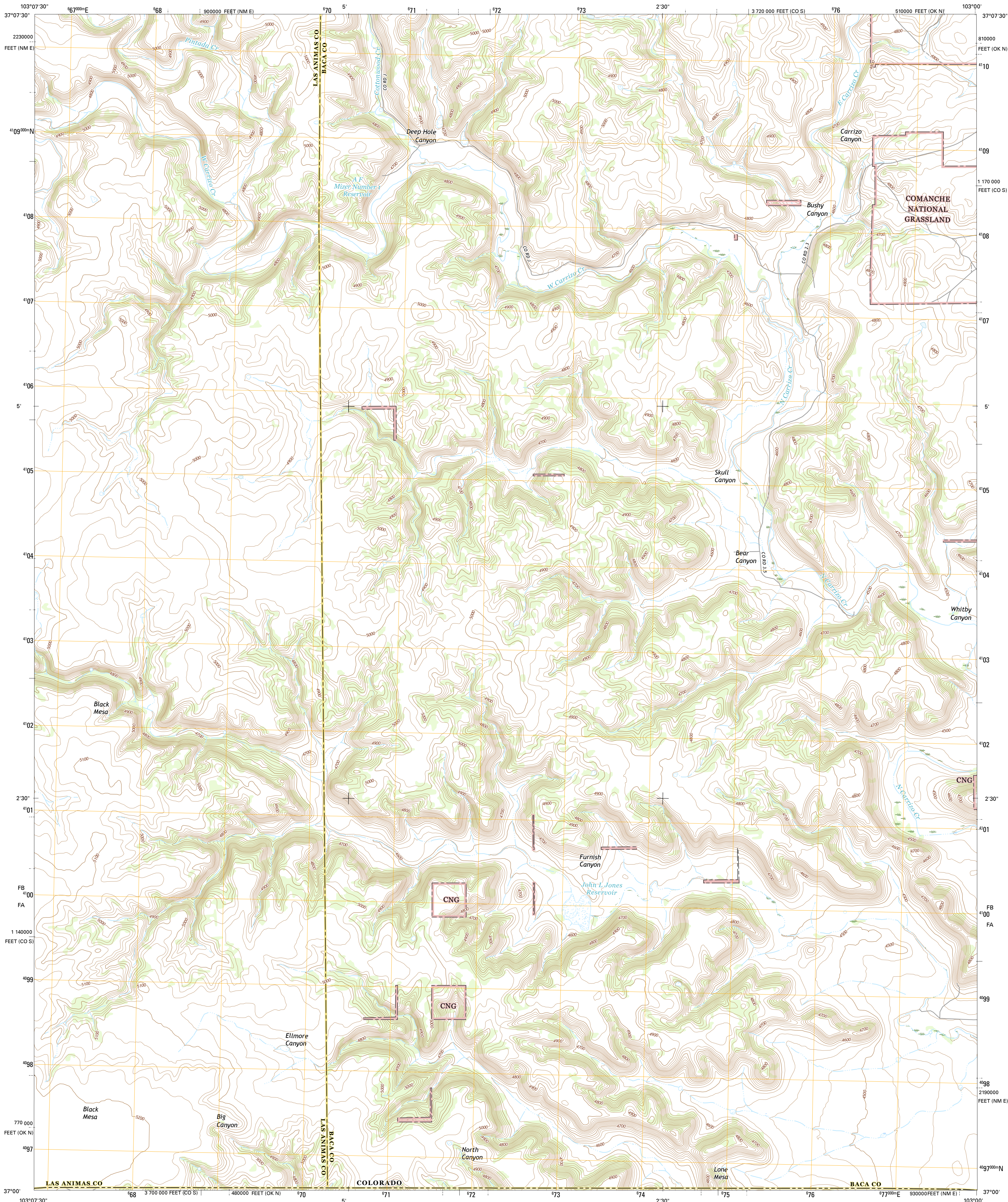




U.S. DEPARTMENT OF THE INTERIOR
U.S. GEOLOGICAL SURVEY



FURNISH CANYON EAST QUADRANGLE
COLORADO-NEW MEXICO-OKLAHOMA
7.5-MINUTE SERIES



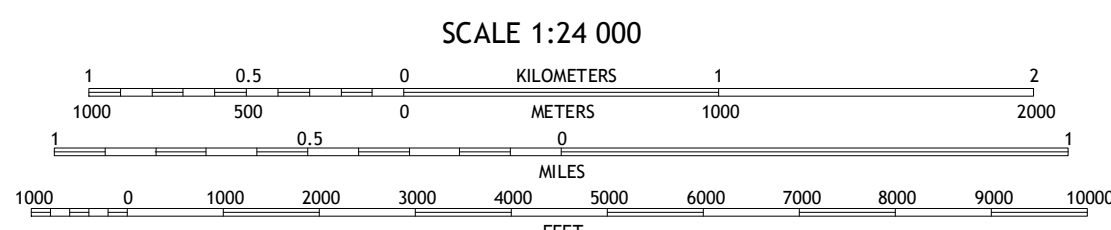
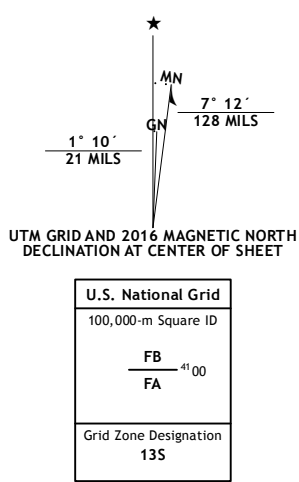
Produced by the United States Geological Survey

North American Datum of 1983 (NAD83)
World Geodetic System of 1984 (WGS84). Projection and
1 000-meter grid: Universal Transverse Mercator, Zone 13S
10 000-foot ticks: Colorado Coordinate System of 1983 (south
zone), New Mexico Coordinate System of 1983 (east zone),
Oklahoma Coordinate System of 1983 (north zone)

This map is not a legal document. Boundaries may be
generalized for this map scale. Private lands within government
reservations may not be shown. Obtain permission before
imagery.

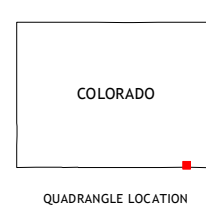
Roads..... U.S. Census Bureau, 2015 - 2016
Roads within US Forest Service Lands..... FSTopo Data
with limited Forest Service updates, 2012 - 2016

Names..... National Hydrography Dataset, 2013
Hydrography..... National Elevation Dataset, 2002
Contours..... Multiple sources; see metadata file 1972 - 2016
Public Land Survey System..... BLM, 2011
Wetlands..... FWS National Wetlands Inventory 1977 - 2014



CONTOUR INTERVAL 20 FEET
NORTH AMERICAN VERTICAL DATUM OF 1988

This map was produced to conform with the
National Geospatial Program US Topo Product Standard, 2011.
A metadata file associated with this product is draft version 0.6.19



ROAD CLASSIFICATION	
Expressway	Local Connector
Secondary Hwy	Local Road
Ramp	4WD
Interstate Route	US Route
FS Primary Route	FS Passenger Route
	FS High Clearance Route

Check with local Forest Service unit
for current travel conditions and restrictions.

1	2	3
4	5	6
7	8	9

ADJOINING QUADRANGLES

FURNISH CANYON EAST, CO-NM-OK
2016

