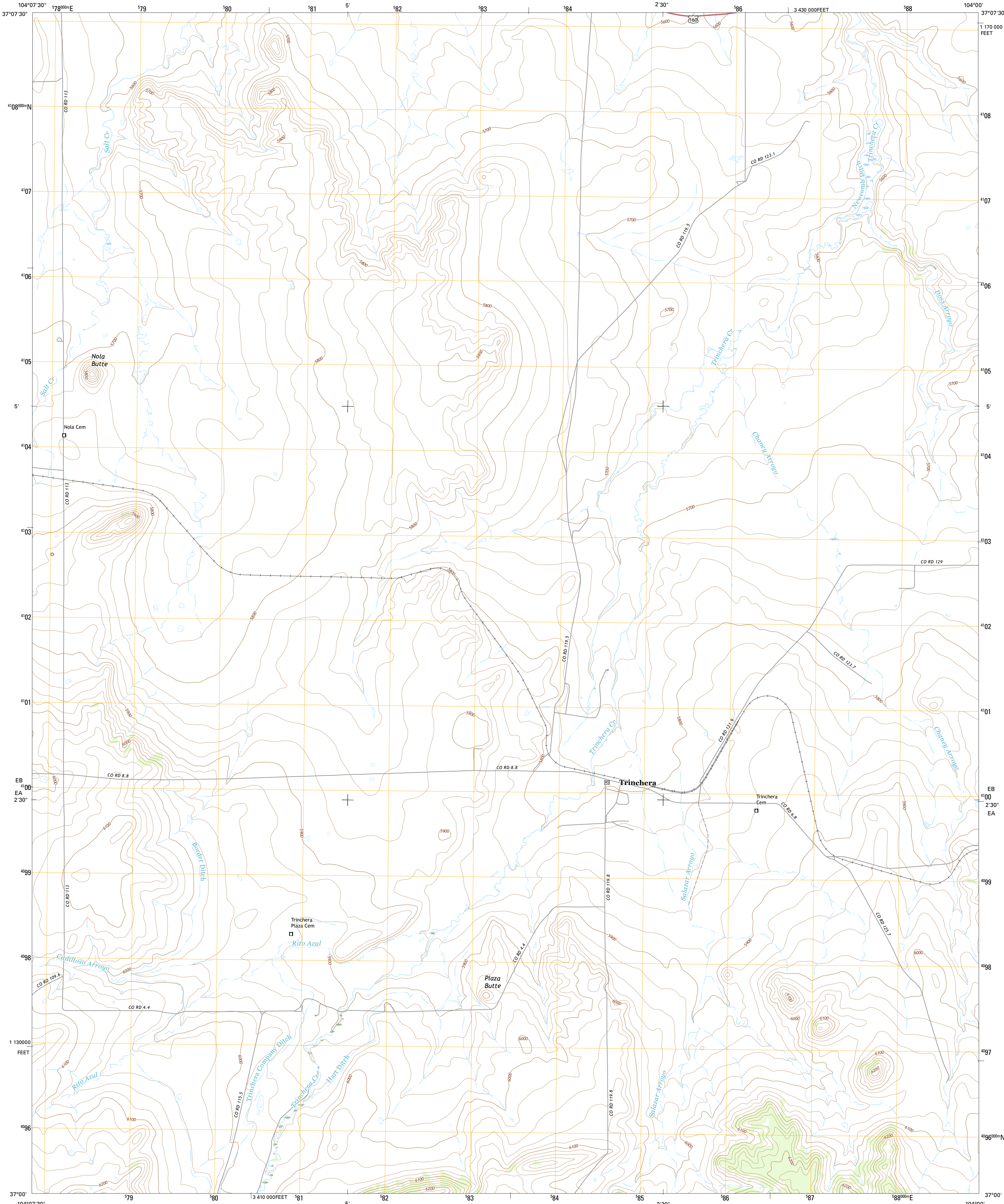




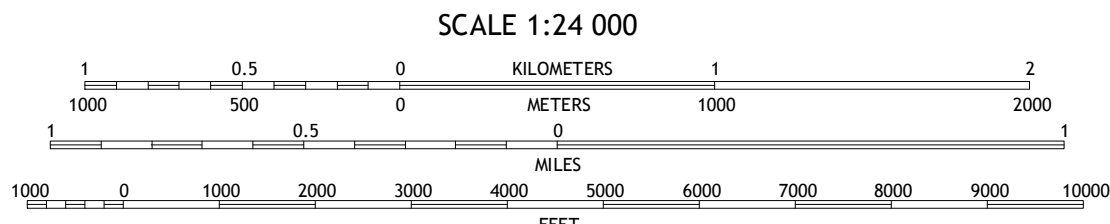
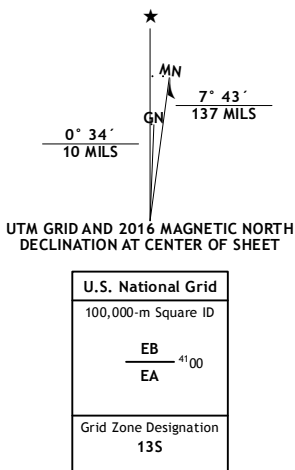
U.S. DEPARTMENT OF THE INTERIOR  
U.S. GEOLOGICAL SURVEY



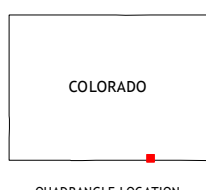
TRINCHERA QUADRANGLE  
COLORADO-LAS ANIMAS CO.  
7.5-MINUTE SERIES



**Produced by the United States Geological Survey**  
North American Datum of 1983 (NAD83)  
World Geodetic System of 1984 (WGS84). Projection and  
1 000-meter grid: Universal Transverse Mercator, Zone 13S  
10 000-foot ticks: Colorado Coordinate System of 1983 (south  
zone)  
  
This map is not a legal document. Boundaries may be  
generalized for this map scale. Private lands within government  
reservations may not be shown. Obtain permission before  
entering private lands.  
Imagery.....NAIP, July 2013  
Roads.....U.S. Census Bureau, 2015 2016  
Names.....GNIS, 2016  
Hydrography.....National Hydrography Dataset, 2013  
Contours.....National Elevation Dataset, 2007  
Boundaries.....Multiple sources; see metadata file 1972 - 2016  
Public Land Survey System.....BLM, 2011  
Wetlands.....FWS National Wetlands Inventory 1977 - 2014



CONTOUR INTERVAL 20 FEET  
NORTH AMERICAN VERTICAL DATUM OF 1988  
  
This map was produced to conform with the  
National Geospatial Program US Topo Product Standard, 2011.  
A metadata file associated with this product is draft version 0.6.19



**ROAD CLASSIFICATION**  
Expressway  
Secondary Hwy  
Ramp  
Local Connector  
Local Road  
4WD  
Interstate Route  
US Route  
State Route

1	2	3
4	5	6
7	8	9

ADJOINING QUADRANGLES

1 Patterson Crossing  
2 Purgatoire Canyon  
3 Tremontina Canyon  
4 Abeyta  
5 Branson  
6 Dale Mountain  
7 Trinchera Pass  
8 Alps Mesa

TRINCHERA, CO  
2016

