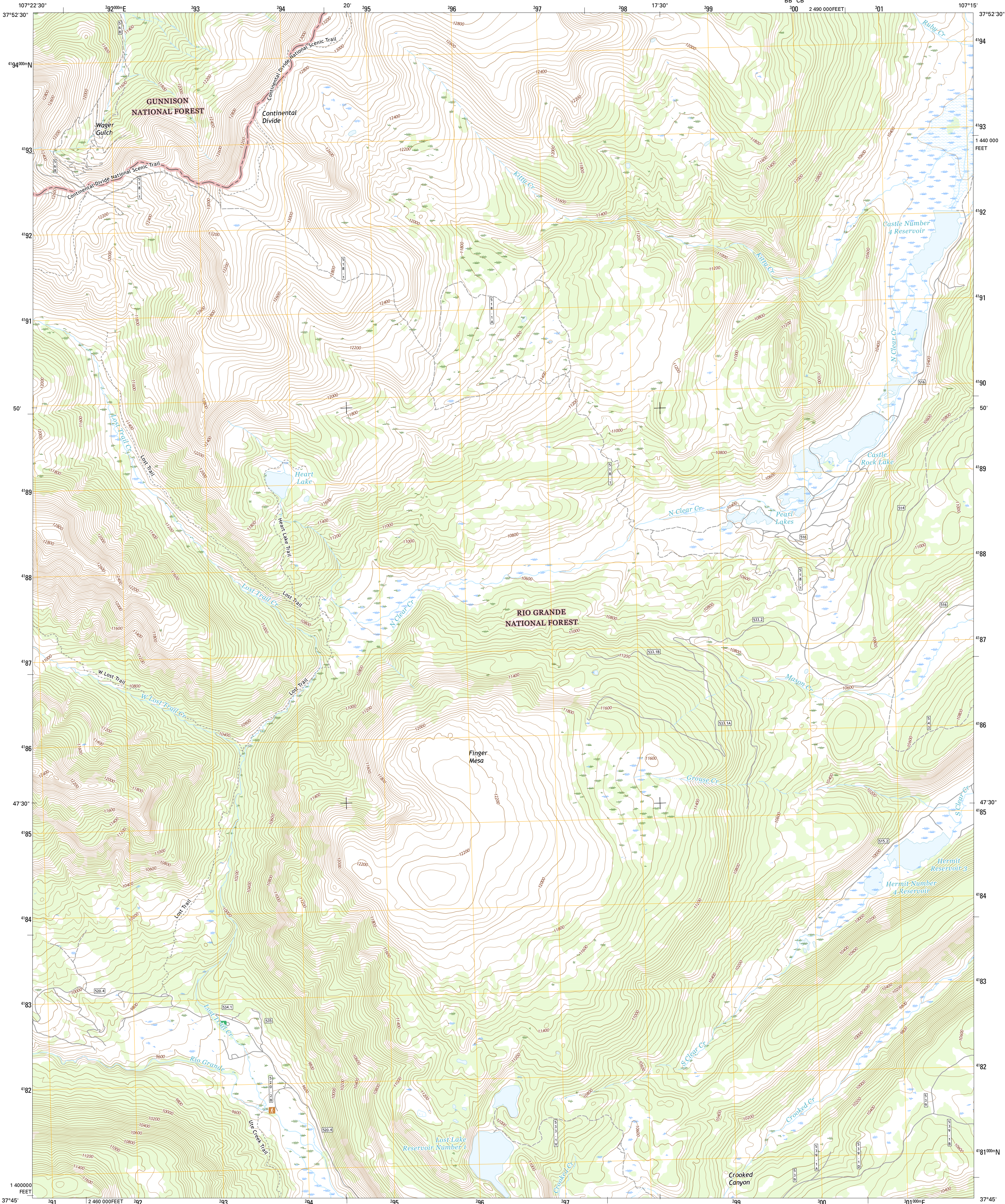




U.S. DEPARTMENT OF THE INTERIOR
U.S. GEOLOGICAL SURVEY



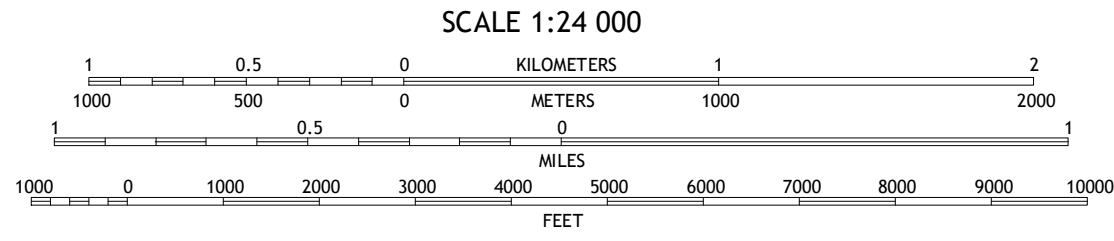
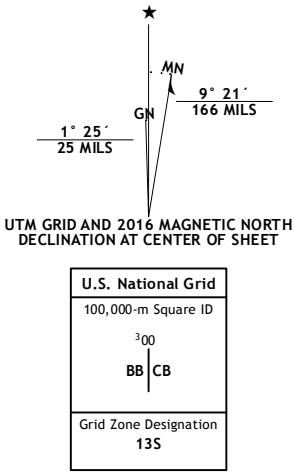
FINGER MESA QUADRANGLE
COLORADO-HINSDALE CO.
7.5-MINUTE SERIES



Produced by the United States Geological Survey
North American Datum of 1983 (NAD83)
World Geodetic System of 1984 (WGS84) Projection and
1 000-meter grid: Universal Transverse Mercator, Zone 13S
10 000-foot ticks: Colorado Coordinate System of 1983 (south zone)

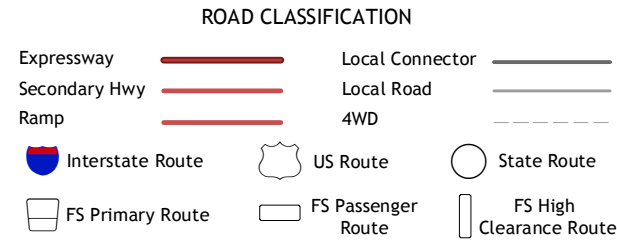
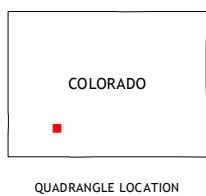
This map is not a legal document. Boundaries may be generalized for this map scale. Private lands within government reservations may not be shown. Obtain permission before entering private lands.

Imagery.....N.A.P. September 2013
Roads.....U.S. Census Bureau, 2015 2016
Roads within US Forest Service Lands.....FS Topo Data
with limited Forest Service updates, 2012 2016
Names.....National Hydrography Dataset, 2016
Hydrography.....National Hydrography Dataset, 2013
Contours.....National Elevation Dataset, 2003
Boundaries.....Multiple sources; see metadata file 1972 2016
Public Land Survey System.....BLM, 2011
Wetlands.....FWS National Wetlands Inventory 1977 2014



CONTOUR INTERVAL 40 FEET
NORTH AMERICAN VERTICAL DATUM OF 1988

This map was produced to conform with the
National Geospatial Program US Topo Product Standard, 2011.
A metadata file associated with this product is draft version 0.6.19



1	2	3
4	5	6
7	8	9

ADJOINING QUADRANGLES

1 Redcloud Peak
2 Lake San Cristobal
3 Summation Pass
4 Pole Creek Mountain
5 Hermit Lakes
6 Rio Grande Pyramid
7 Weminuche Pass
8 Little Squaw Creek

Check with local Forest Service unit
for current travel conditions and restrictions.

FINGER MESA, CO
2016

