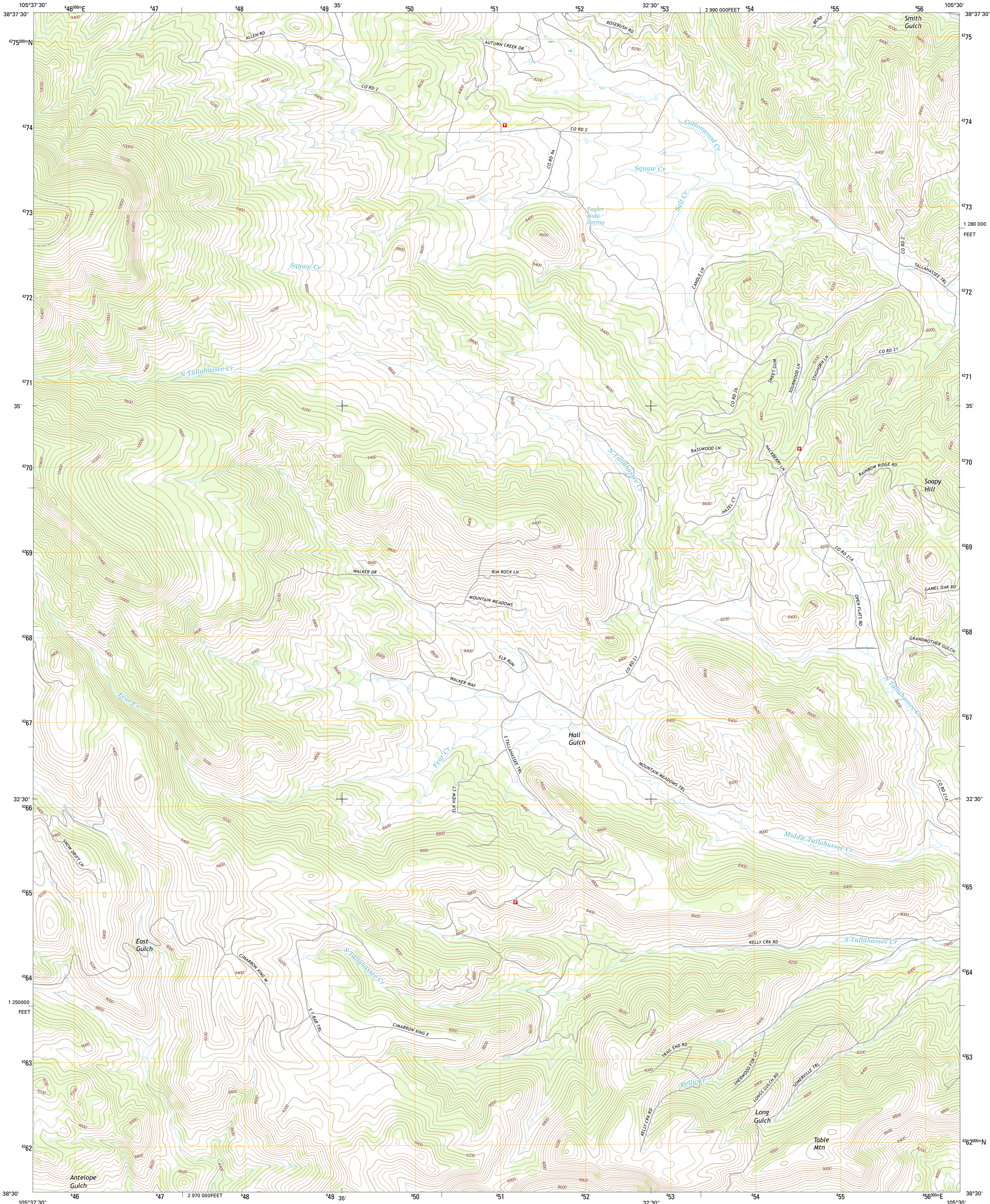




U.S. DEPARTMENT OF THE INTERIOR  
U.S. GEOLOGICAL SURVEY



HALL GULCH QUADRANGLE  
COLORADO-FREMONT CO.  
7.5-MINUTE SERIES



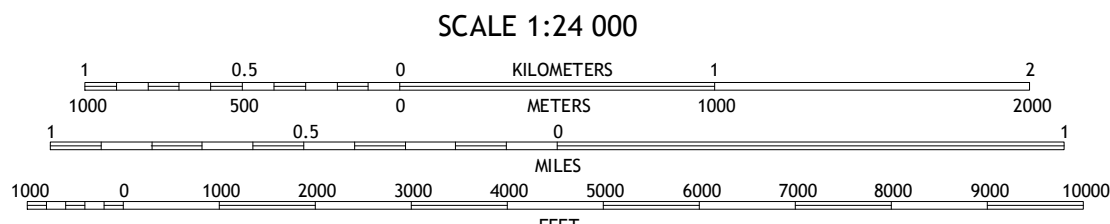
Produced by the United States Geological Survey  
North American Datum of 1983 (NAD83)  
World Geodetic System of 1984 (WGS84). Projection and  
1 000-meter grid: Universal Transverse Mercator, Zone 13S  
10 000-foot ticks: Colorado Coordinate System of 1983 (central  
zone)

This map is not a legal document. Boundaries may be  
generalized for this map scale. Private lands within government  
reservations may not be shown. Obtain permission before  
entering private lands.

Imagery.....NAIP September 2013  
Roads.....U.S. Census Bureau 2015 2016  
Names.....GNIS 2016  
Hydrography.....National Hydrography Dataset 2013  
Contours.....National Elevation Dataset 2005  
Boundaries.....Multiple sources; see metadata file 1972 2016  
Public Land Survey System.....BLM 2011  
Wetlands.....FWS National Wetlands Inventory 1977 2014

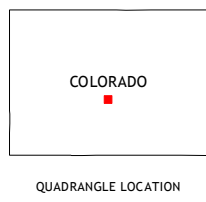
UTM GRID AND 2016 MAGNETIC NORTH  
DECLINATION AT CENTER OF SHEET

U.S. National Grid  
100,000-m Square ID  
DC  
Grid Zone Designation  
13S



CONTOUR INTERVAL 40 FEET  
NORTH AMERICAN VERTICAL DATUM OF 1988

This map was produced to conform with the  
National Geospatial Program US Topo Product Standard, 2011.  
A metadata file associated with this product is draft version 0.6.19



ROAD CLASSIFICATION  
Expressway  
Secondary Hwy  
Ramp  
Local Connector  
Local Road  
4WD  
US Route  
State Route

1	2	3
4	5	6
7	8	9

ADJOINING QUADRANGLES

1 Black Mountain  
2 Thirtymile Mountain  
3 Cover Mountain  
4 Waugh Mountain  
5 Gribble Mountain  
6 Arkansas Mountain  
7 Echo  
8 McIntyre Hills

HALL GULCH, CO  
2016

