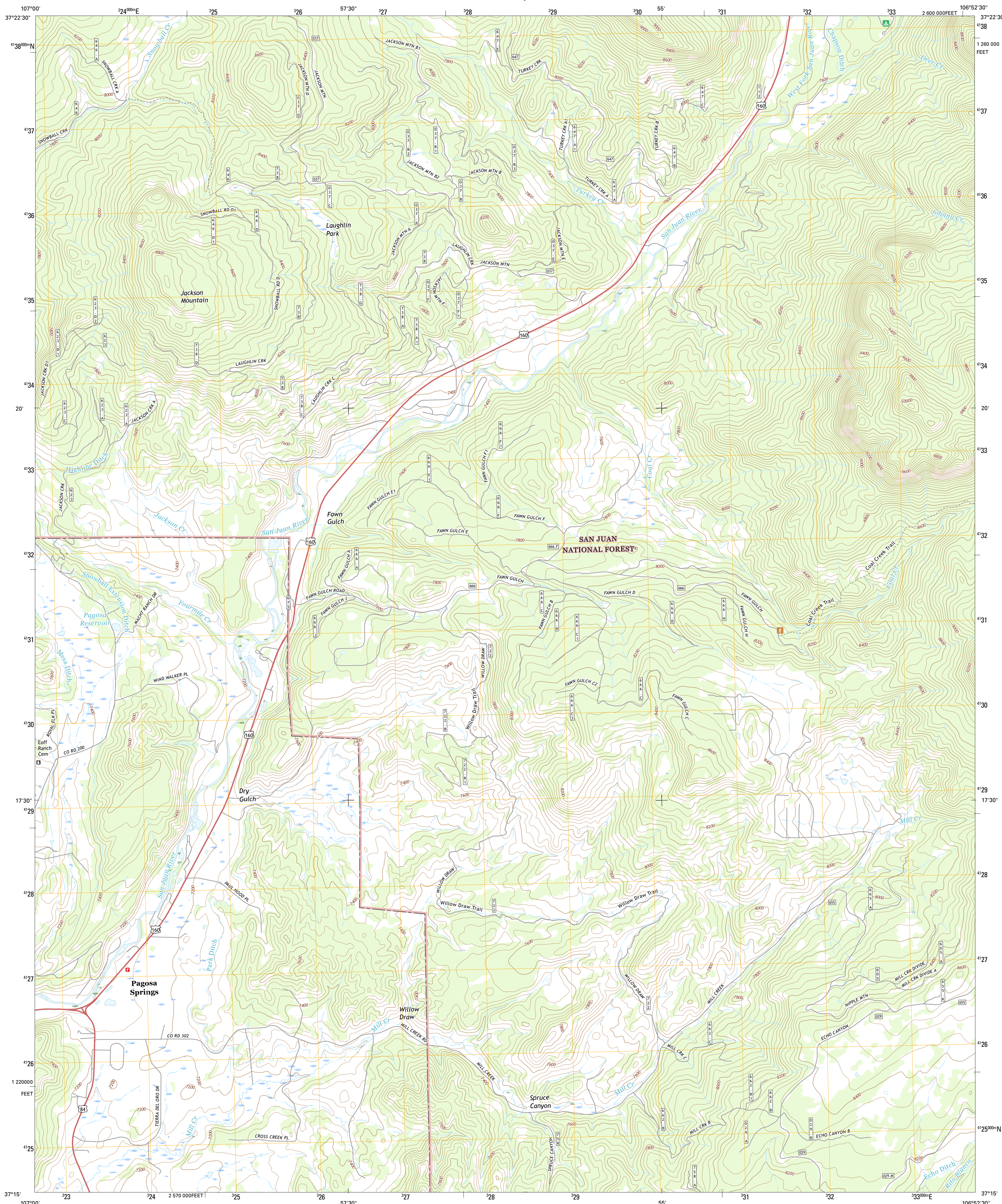
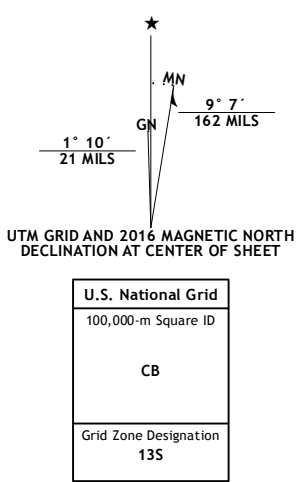




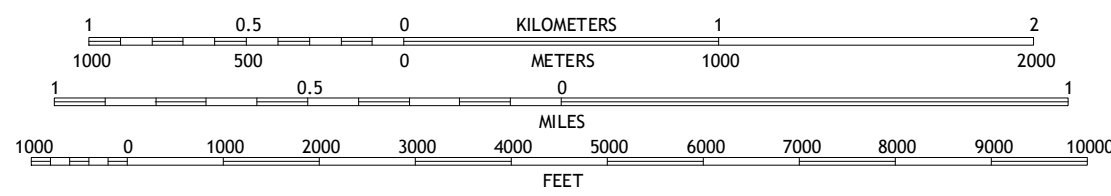
JACKSON MOUNTAIN QUADRANGLE
COLORADO-ARCHULETA CO.
7.5-MINUTE SERIES



Imagery.....NAIP, September	2013
Roads.....U.S. Census Bureau, 2015	2016
Roads within US Forest Service Lands.....FSTPO	Data
Names.....with limited Forest Service updates, 2012	2016
Hydrography.....GNIS,	2013
Contours.....National Hydrography Dataset,	2013
Boundaries.....National Elevation Dataset,	2005
Public Land Survey System.....BLM,	2011
Wetlands.....FWS National Wetlands Inventory 1977	2014

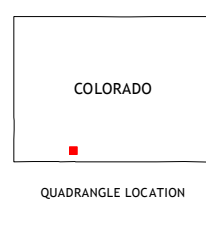


SCALE 1:24 000

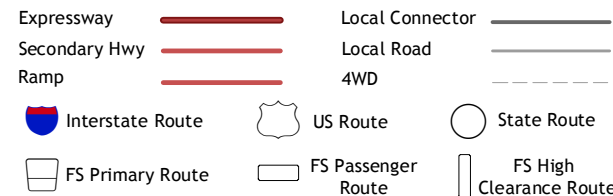


CONTOUR INTERVAL 40 FEET
AMERICAN VERTICAL DATUM OF 1988

This map was produced to conform with the National Geospatial Program US Topo Product Standard, 2011. A metadata file associated with this product is draft version 0.6.19



ROAD CLASSIFICATION



Check with local Forest Service unit
for current travel conditions and restrictions.

1	2	3	1 Pagosa Peak
			2 Saddle Mountain
4		5	3 Wolf Creek Pass
			4 Pagosa Springs
6	7	8	5 Blackhead Peak
			6 Oakbrush Hill
			7 Serviceberry Mountain
			8 Harris Lake

ADJOINING QUADRANGLES

JACKSON MOUNTAIN, CO
2016

