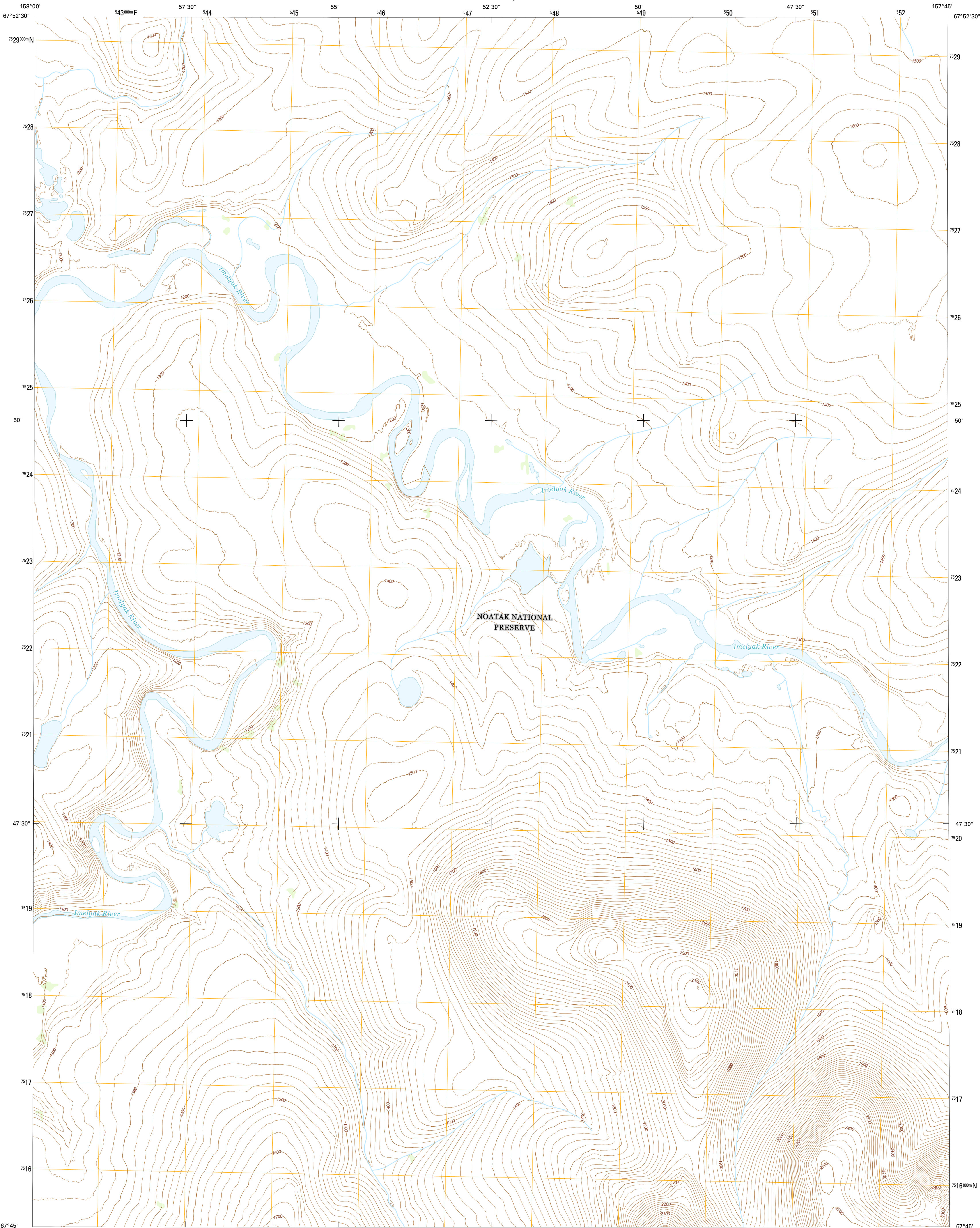




U.S. DEPARTMENT OF THE INTERIOR
U.S. GEOLOGICAL SURVEY



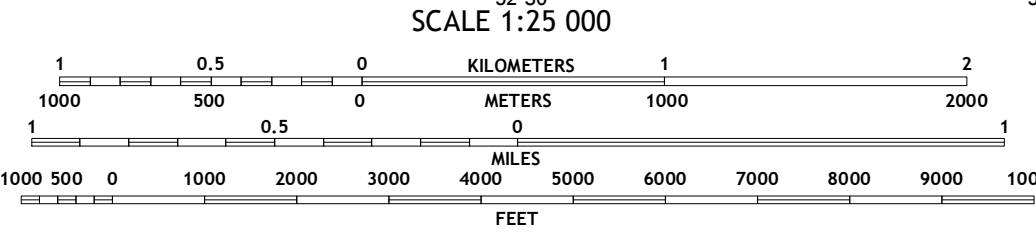
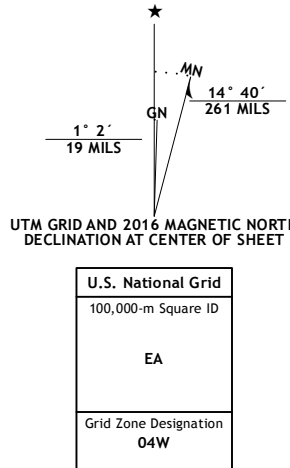
AMBLER RIVER D-4 SW QUADRANGLE
ALASKA-NORTHWEST ARCTIC BOROUGH
7.5-MINUTE SERIES



Produced by the United States Geological Survey
North American Datum of 1983 (NAD83)
World Geodetic System of 1984 (WGS84). Projection and
1 000-meter grid: Universal Transverse Mercator, Zone 64W
10 000-foot ticks: Alaska Coordinate System of 1983 (zone 6)

This map is not a legal document. Boundaries may be
generalized for this map scale. Private lands within government
reservations may not be shown. Obtain permission before
entering private lands.

Imagery.....SPOTD, 2009 - 2015
Roads.....Alaska Dept. of Transportation, 2014
Names.....GNIS, 2016
Hydrography.....National Hydrography Dataset, 2009
Contours.....National Elevation Dataset, 2013
Boundaries.....Multiple sources; see metadata file, 1950 - 2016
Public Land Survey System.....BLM, 2006 - 2008
Wetlands.....FWS National Wetlands Inventory 1977 - 2014



CONTOUR INTERVAL 20 FEET
NORTH AMERICAN VERTICAL DATUM OF 1988
This map was produced to conform with the
National Geospatial Program US Topo Product Standard, 2011.
A metadata file associated with this product is draft version 0.6.18



1	2	3
4	5	6
7	8	9

1 Ambler River (D-5) NE
2 Ambler River (D-4) NW
3 Ambler River (D-4) NE
4 Ambler River (D-5) SE
5 Ambler River (D-4) SE
6 Ambler River (C-5) NE
7 Ambler River (C-4) NW
8 Ambler River (C-4) NE

ROAD CLASSIFICATION	
Expressway	Local Connector
Secondary Hwy	Local Road
Ramp	4WD
Interstate Route	US Route
	State Route

AMBLER RIVER D-4 SW, AK
2016

