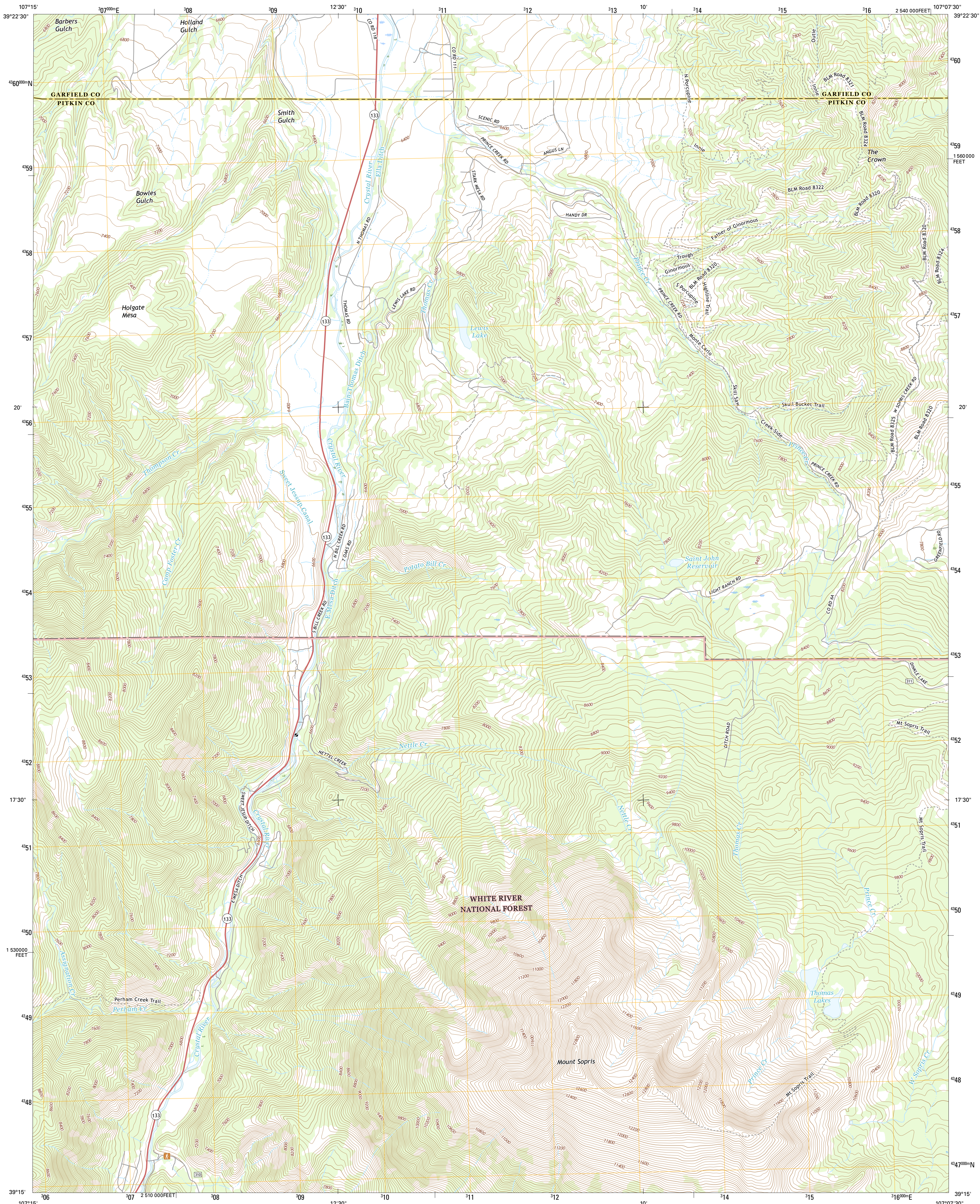




U.S. DEPARTMENT OF THE INTERIOR
U.S. GEOLOGICAL SURVEY

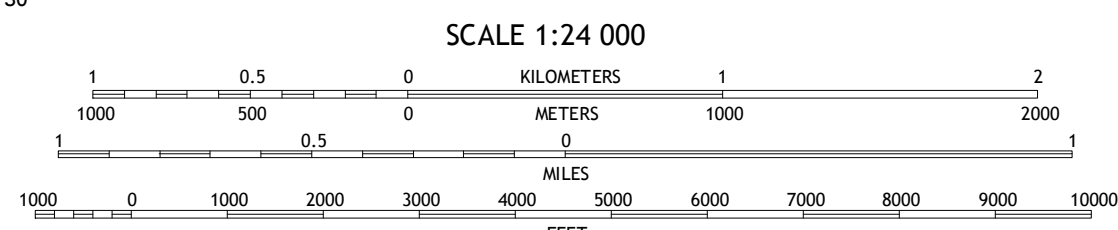


MOUNT SOPRIS QUADRANGLE
COLORADO
7.5-MINUTE SERIES

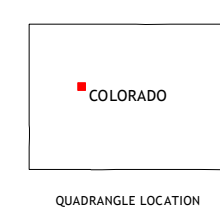


Produced by the United States Geological Survey
North American Datum of 1983 (NAD83)
World Geodetic System of 1984 (WGS84) Projection and
1 000-meter grid; Universal Transverse Mercator, Zone 13S
10 000-foot ticks; Colorado Coordinate System of 1983 (central zone)
This map is not a legal document. Boundaries may be generalized for this map scale. Private lands within government reservations may not be shown. Obtain permission before entering private lands.
Imagery.....NAIP, September 2013
Roads.....U.S. Census Bureau, 2015 - 2016
Roads within US Forest Service Lands.....USFS Data with limited Forest Service updates, 2012 - 2016
Names.....National Hydrography Dataset, 2013
Hydrography.....National Elevation Dataset, 2003
Contours.....Multiple sources; see metadata file 1972 - 2016
Public Land Survey System.....BLM, 2011
Wetlands.....FWS National Wetlands Inventory 1977 - 2014

UTM GRID AND 2011 MAGNETIC NORTH DECLINATION AT CENTER OF SHEET
U.S. National Grid
100,000-m Square ID
CD
Grid Zone Designation
13S



CONTOUR INTERVAL 40 FEET
NORTH AMERICAN VERTICAL DATUM OF 1988
This map was produced to conform with the
National Geospatial Program US Topo Product Standard, 2011.
A metadata file associated with this product is draft version 0.6.19



ROAD CLASSIFICATION
Expressway
Secondary Hwy
Ramp
Interstate Route
Primary Route
Local Connector
Local Road
4WD
US Route
FS Passenger Route
State Route
FS High Clearance Route
Check with local Forest Service unit for current travel conditions and restrictions.

| | | |
|---|---|---|
| 1 | 2 | 3 |
| 4 | 5 | 6 |
| 7 | 8 | 9 |

ADJOINING QUADRANGLES

1 Cattle Creek
2 Carbondale
3 Lerch
4 Stony Ridge
5 Basalt
6 Placita
7 Redstone
8 Capitol Peak

MOUNT SOPRIS, CO
2016

