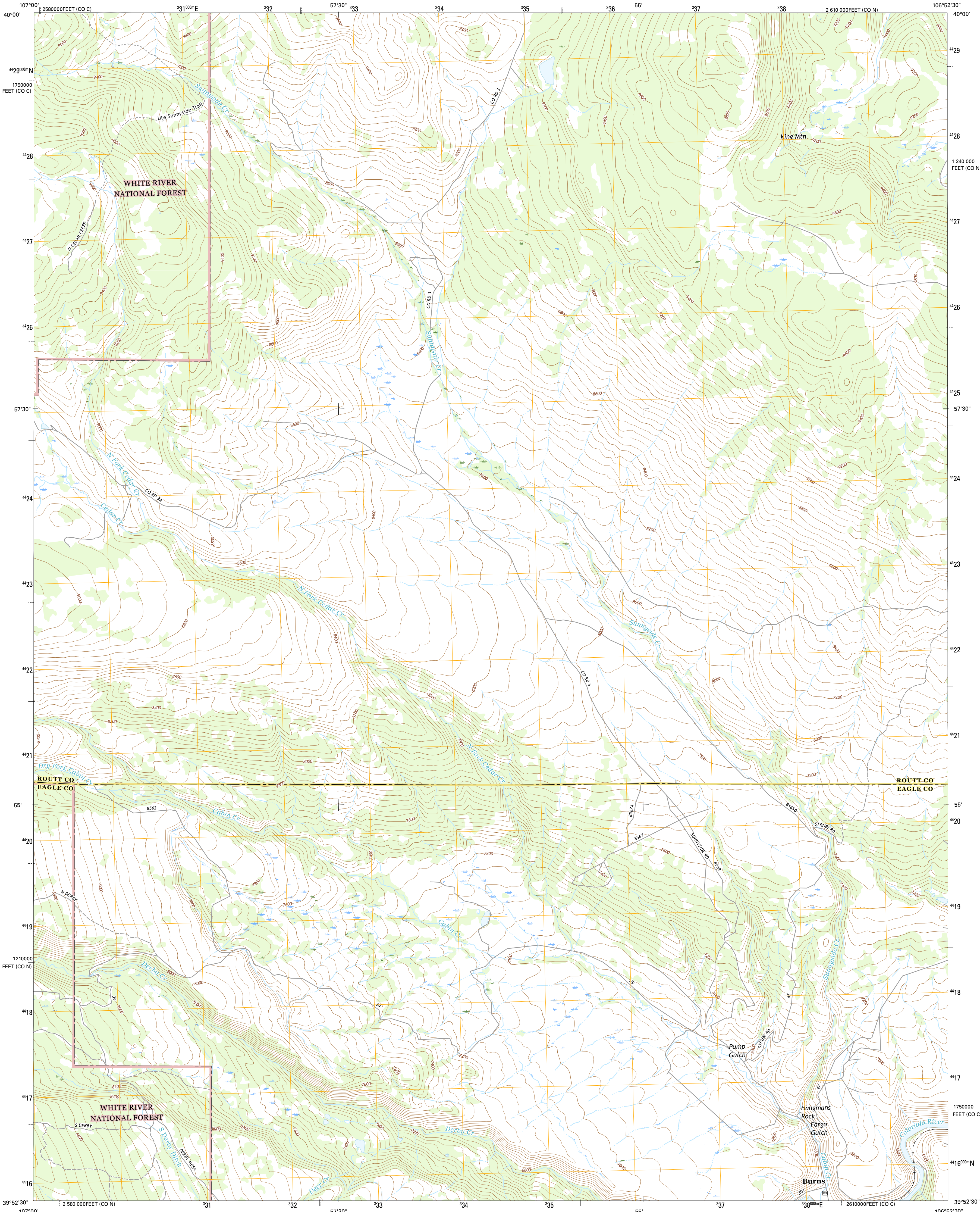




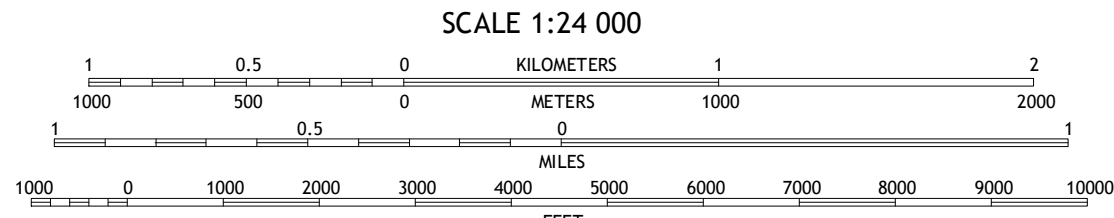
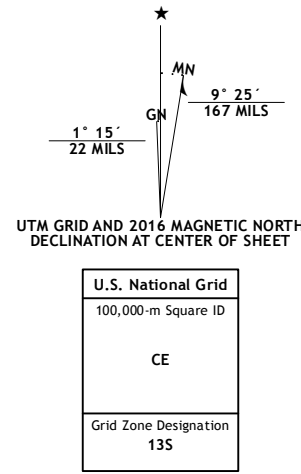
U.S. DEPARTMENT OF THE INTERIOR
U.S. GEOLOGICAL SURVEY



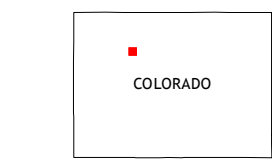
BURNS NORTH QUADRANGLE
COLORADO
7.5-MINUTE SERIES



Produced by the United States Geological Survey
North American Datum of 1983 (NAD83)
World Geodetic System of 1984 (WGS84). Projection and
1 000-meter grid: Universal Transverse Mercator, Zone 13S
10 000-foot ticks: Colorado Coordinate System of 1983 (north
and central zones)
This map is not a legal document. Boundaries may be
generalized for this map scale. Private lands within government
reservations may not be shown. Obtain permission before
entering private lands.
Imagery.....NAIP, September 2013
Roads.....U.S. Census Bureau, 2015 - 2016
Roads within US Forest Service Lands.....FS Topo
Data with limited Forest Service updates, 2012 - 2016
Names.....National Hydrography Dataset, 2015
Hydrography.....National Hydrography Dataset, 2015
Contours.....National Elevation Dataset, 2004
Boundaries.....Multiple sources; see metadata file 1972 - 2016
Public Land Survey System.....BLM, 2011
Wetlands.....FWS National Wetlands Inventory 1977 - 2014



CONTOUR INTERVAL 40 FEET
NORTH AMERICAN VERTICAL DATUM OF 1988
This map was produced to conform with the
National Geospatial Program US Topo Product Standard, 2011.
A metadata file associated with this product is draft version 0.6.19



ROAD CLASSIFICATION
Expressway
Secondary Hwy
Ramp
Interstate Route
US Route
FS Primary Route
Local Connector
Local Road
4WD
FS Passenger Route
State Route
FS High Clearance Route
Check with local Forest Service unit
for current travel conditions and restrictions.

1	2	3
4	5	6
7	8	9

1 Orno Peak
2 Trapper
3 Toponas
4 Dome Peak
5 Blue Hill
6 Sugarloaf Mountain
7 Burns South
8 Castle Peak

BURNS NORTH, CO
2016

