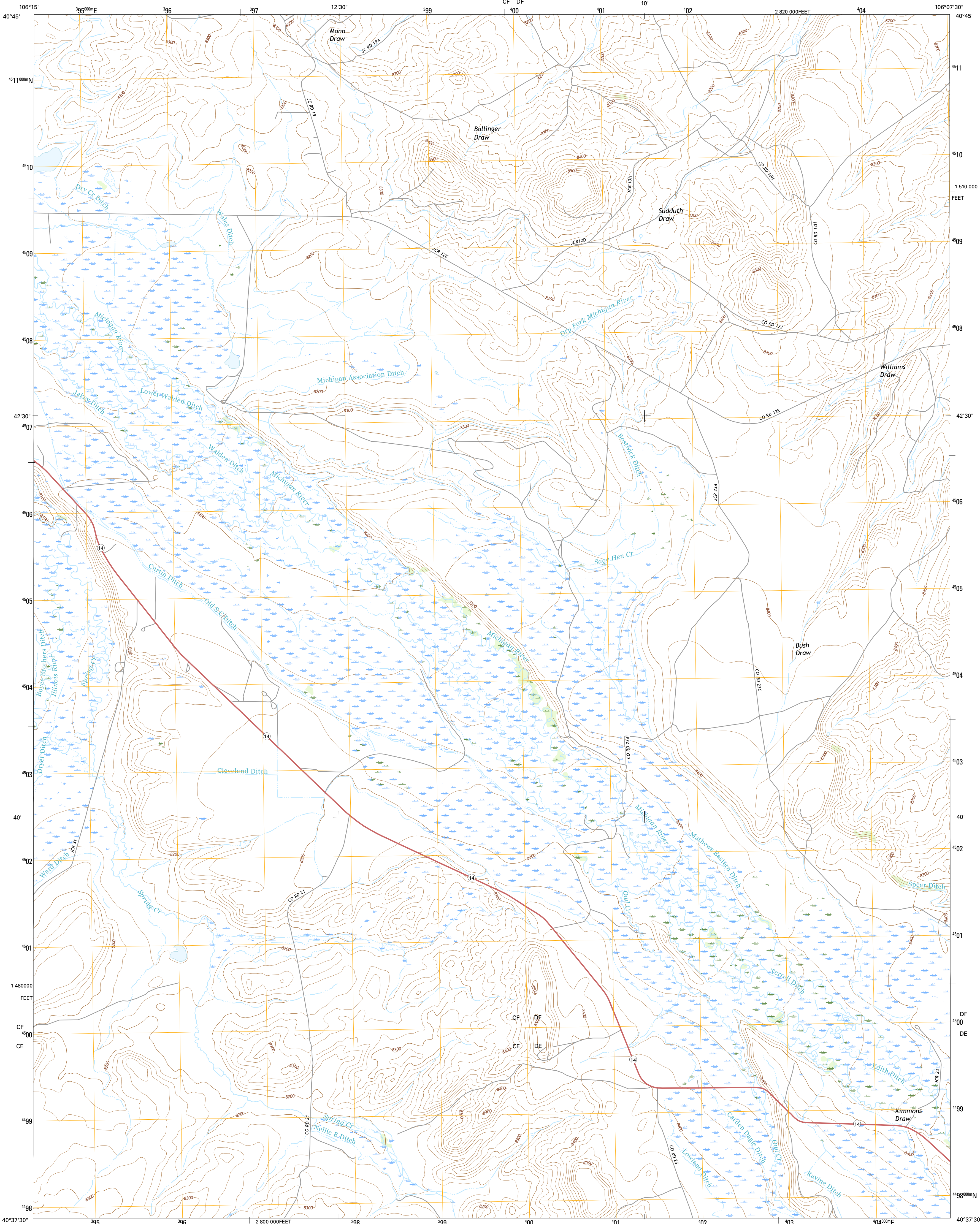




U.S. DEPARTMENT OF THE INTERIOR  
U.S. GEOLOGICAL SURVEY

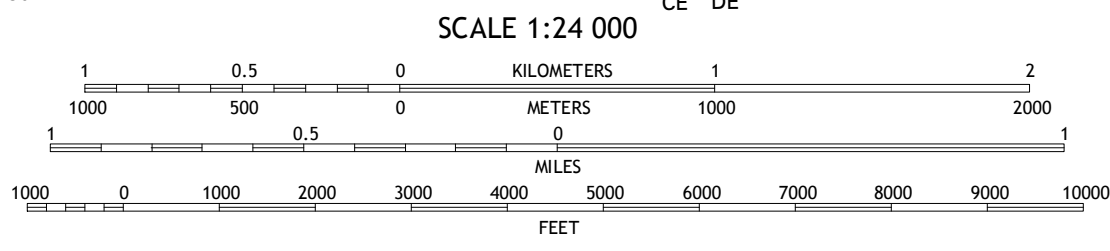


GOULD NW QUADRANGLE  
COLORADO-JACKSON CO.  
7.5-MINUTE SERIES

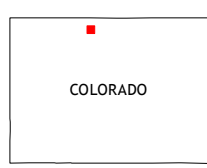


**Produced by the United States Geological Survey**  
North American Datum of 1983 (NAD83). Projection and  
World Geodetic System of 1984 (WGS84). Projection and  
1 000-meter grid. Universal Transverse Mercator, Zone 13T  
10 000-foot ticks: Colorado Coordinate System of 1983 (north  
zone)  
  
This map is not a legal document. Boundaries may be  
generalized for this map scale. Private lands within government  
reservations may not be shown. Obtain permission before  
entering private lands.  
  
Imagery.....N.A.I.P., September 2013  
Roads.....U.S. Census Bureau, 2015 - 2016  
Names.....GNIS, 2016  
Hydrography.....National Hydrography Dataset, 2013  
Contours.....National Elevation Dataset, 2005  
Boundaries.....Multiple sources; see metadata file 1972 - 2016  
Public Land Survey System.....BLM, 2011  
Wetlands.....FWS National Wetlands Inventory 1977 - 2014

UTM GRID AND 2016 MAGNETIC NORTH  
DECLINATION AT CENTER OF SHEET  
  
U.S. National Grid  
100,000-m Square ID  
100  
CF DF  
CE DE  
Grid Zone Designation  
13T



CONTOUR INTERVAL 20 FEET  
NORTH AMERICAN VERTICAL DATUM OF 1988  
  
This map was produced to conform with the  
National Geospatial Program US Topo Product Standard, 2011.  
A metadata file associated with this product is draft version 0.6.19



**ROAD CLASSIFICATION**  
Expressway Local Connector  
Secondary Hwy Local Road  
Ramp 4WD  
Interstate Route US Route State Route

1	2	3
4	5	6
7	8	9

ADJOINING QUADRANGLES

1 Cowdrey  
2 Eagle Hill  
3 Shipman Mountain  
4 Walden  
5 Johnny Moore Mountain  
6 MacFarlane Reservoir  
7 Owl Ridge  
8 Gould

GOULD NW, CO  
2016

