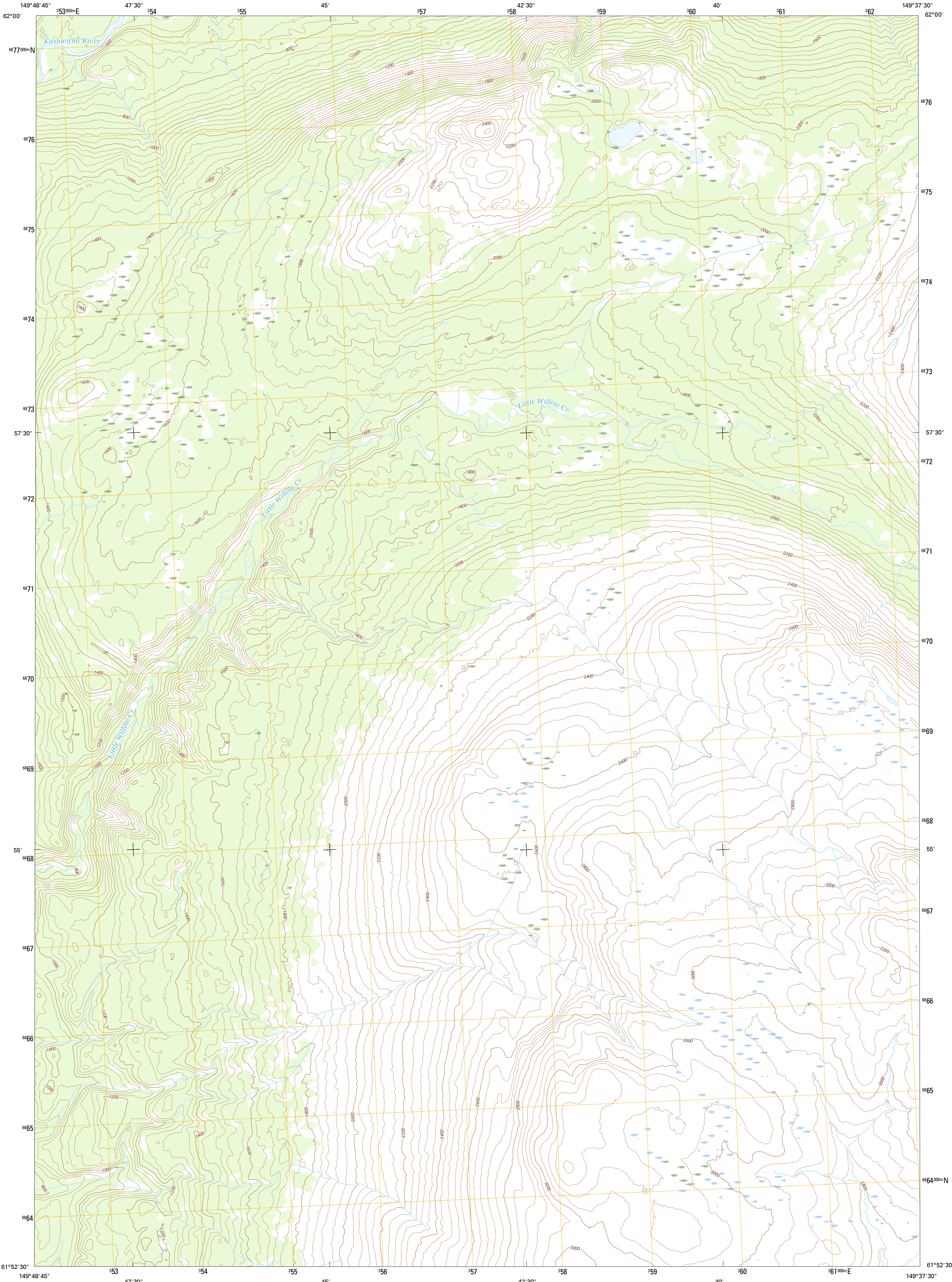




U.S. DEPARTMENT OF THE INTERIOR
U.S. GEOLOGICAL SURVEY



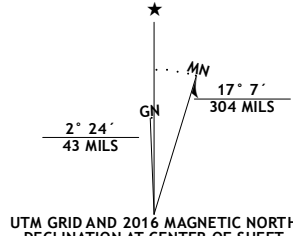
ANCHORAGE D-8 NE QUADRANGLE
ALASKA-MATANUSKA-SUSITNA BOROUGH
7.5-MINUTE SERIES



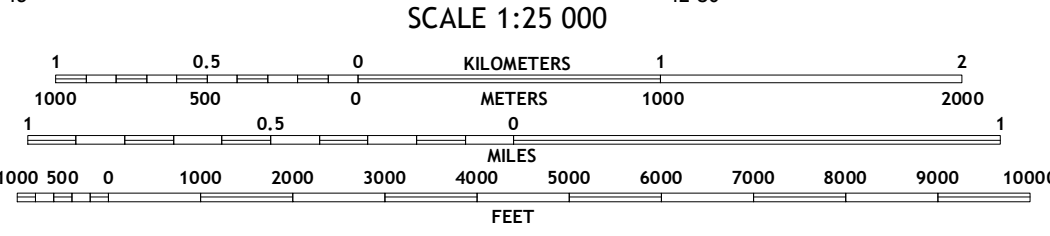
Produced by the United States Geological Survey
North American Datum of 1983 (NAD83)
World Geodetic System of 1984 (WGS84). Projection and
1000-meter grid: Universal Transverse Mercator, Zone 06V
10 000-foot ticks: Alaska Coordinate System of 1983 (zone 4)

This map is not a legal document. Boundaries may be
generalized for this map scale. Private lands within government
reservations may not be shown. Obtain permission before
entering private lands.

Imagery.....SPOTi, 2009 - 2015
Roads.....Alaska Dept. of Transportation, 2014
Names.....GNIS, 2016
Hydrography.....National Hydrography Dataset, 2010
Contours.....National Elevation Dataset, 2013
Boundaries.....Multiple sources; see metadata file, 1950 - 2016
Public Land Survey System.....BLM, 2006 - 2008
Wetlands.....FWS National Wetlands Inventory 1977 - 2014



U.S. National Grid
100,000-m Square ID
UP
Grid Zone Designation
06V



CONTOUR INTERVAL 40 FEET
NORTH AMERICAN VERTICAL DATUM OF 1988

This map was produced to conform with the
National Geospatial Program US Topo Product Standard, 2011.
A metadata file associated with this product is draft version 0.6.18



QUADRANGLE LOCATION

1	2	3
4	5	6
7	8	9

1 Talkeetna Mountains (A-6) SW
2 Talkeetna Mountains (A-6) SE
and (A-6) SW
3 Talkeetna Mountains (A-6) SE
and (A-6) SW
4 Anchorage (D-8) NW
5 Anchorage (D-7) NW
6 Anchorage (D-8) SW
7 Anchorage (D-8) SE
8 Anchorage (D-7) SW

ROAD CLASSIFICATION	
Expressway	Local Connector
Secondary Hwy	Local Road
Ramp	4WD
Interstate Route	US Route
	State Route

ANCHORAGE D-8 NE, AK
2016

