

UNITED STATES
DEPARTMENT OF THE INTERIOR
GEOLOGICAL SURVEY

WAR DEPARTMENT
CORPS OF ENGINEERS, U. S. ARMY

BRISTOL QUADRANGLE
7 1/2-MINUTE SERIES

(Winged)
82500

(Graph)
82500

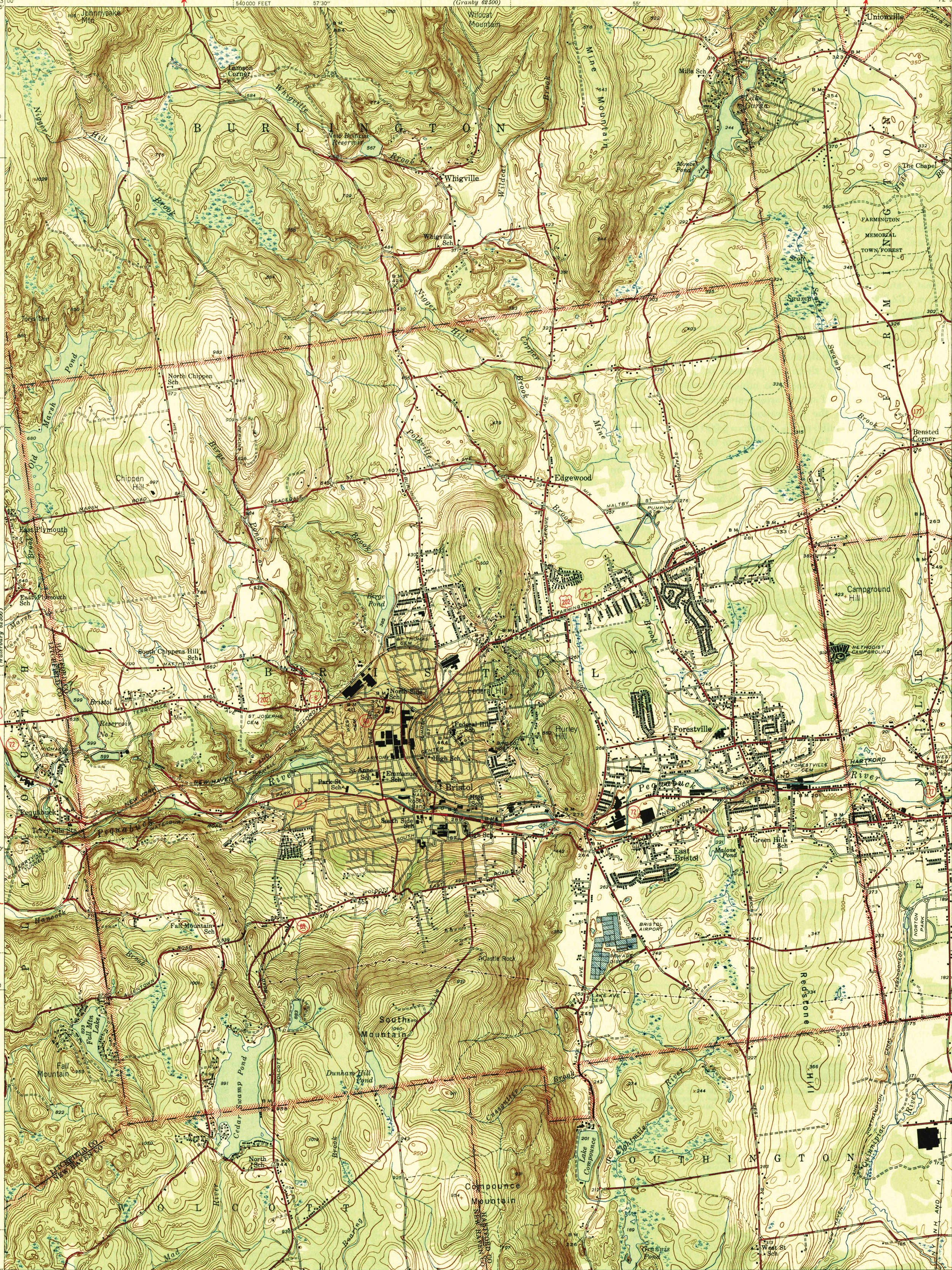
73°10'00"
41°45'

72°52'30"
41°45'

THOMASTON 4.3 MI.
TERRYVILLE 0.5 MI.

TERRYVILLE 1.6 MI.

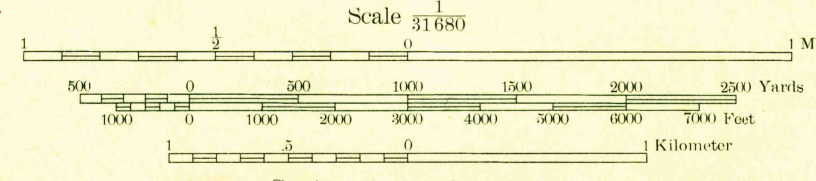
(Waterbury)
82500



Mapped by the Geological Survey
1943
Gray tint indicates areas in which only
landmark buildings are shown

TRUE NORTH
MAGNETIC NORTH
APPROXIMATE MEAN
DECLINATION, 1948

JUNC. U. S. 6A 6.7 MI.
WATERBURY 7.4 MI.



ROAD CLASSIFICATION
1946
Dependable hard surface
heavy-duty road
Secondary hard surface
all weather road
Dirt road
More than two lanes indicated along road with tick at point of change

Polyconic projection, 1927 North American datum
5000 yard grid based on U. S. zone system, A
10000 foot grid based on Connecticut
rectangular coordinate system

BRISTOL, CONN.
Edition of 1946

N4137.5-W7252.5/7.5

HISTORICAL FILES
(DO NOT REMOVE)

SUPERSEDED

FILE COPY
NOT TO BE REMOVED FROM FILES